

WAAS CH <b>69620</b> <b>W14A</b>	APP CRS <b>139°</b>	Rwy Ldg TDZE Apt Elev	<b>4401</b> <b>1319</b> <b>1324</b>
--	------------------------	-----------------------------	---

# RNAV (GPS) RWY 14

BEATRICE MUNI (BIE)

RNP APCH - GPS.

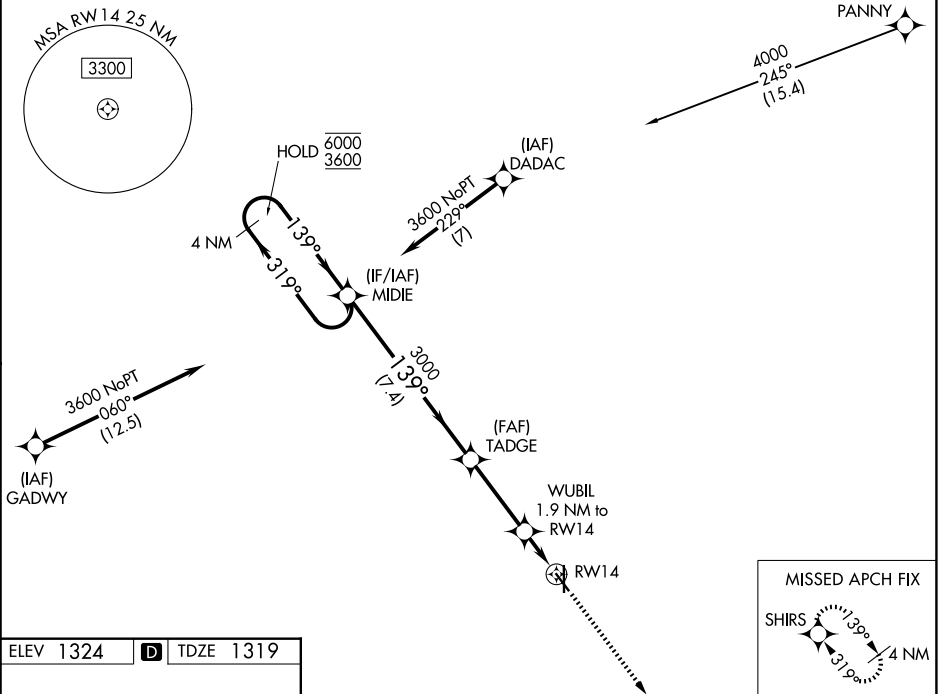
For uncompensated Baro-VNAV systems, LNAV/VNAV NA below -17°C or above 54°C.

MISSED APPROACH: Climb to 3600 direct SHIRS and hold.

AWOS-3  
**125.325**

MINNEAPOLIS CENTER  
**126.4 317.7**

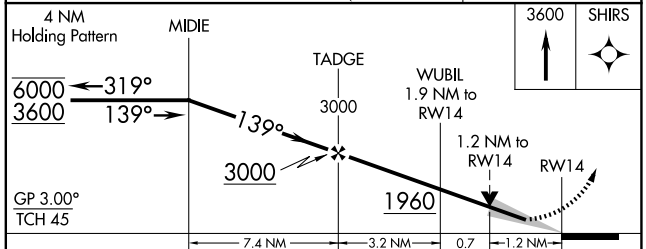
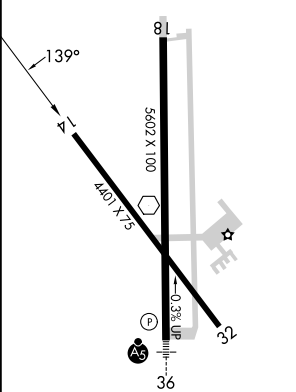
UNICOM  
**122.8 (CTAF) 0**



NC-2, 14 MAY 2026 to 11 JUN 2026

NC-2, 14 MAY 2026 to 11 JUN 2026

ELEV 1324 **D** TDZE 1319



CATEGORY	A	B	C	D
LPV DA		1569-1	250 (300-1)	
LNAV/VNAV DA		1569-1	250 (300-1)	
LNAV MDA	1760-1	441 (500-1)	1760-1 $\frac{3}{8}$	441 (500-1 $\frac{3}{8}$ )
CIRCLING	1820-1	496 (500-1)	2000-2 676 (700-2)	2100-2 $\frac{1}{2}$ 776 (800-2 $\frac{1}{2}$ )

REIL Rwy 14 and 32   
MIRL Rwy 14-32 and 18-36

BEATRICE, NEBRASKA  
Amdt 1F 16APR26

40°18'N-96°45'W

# BEATRICE MUNI (BIE)

## RNAV (GPS) RWY 14