

WAAS CH <b>42920</b> <b>W18A</b>	APP CRS <b>176°</b>	Rwy Ldg TDZE <b>5602</b> <b>1324</b>	Apt Elev <b>1324</b>
--	------------------------	--	-------------------------

# RNAV (GPS) RWY 18

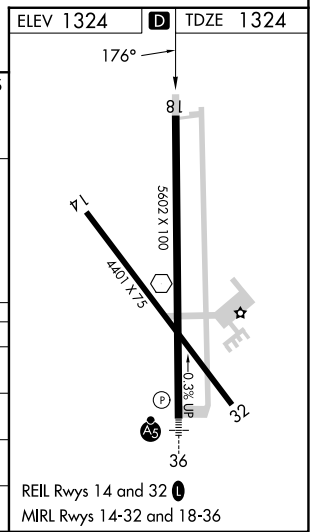
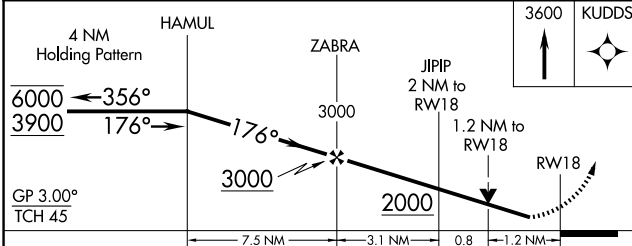
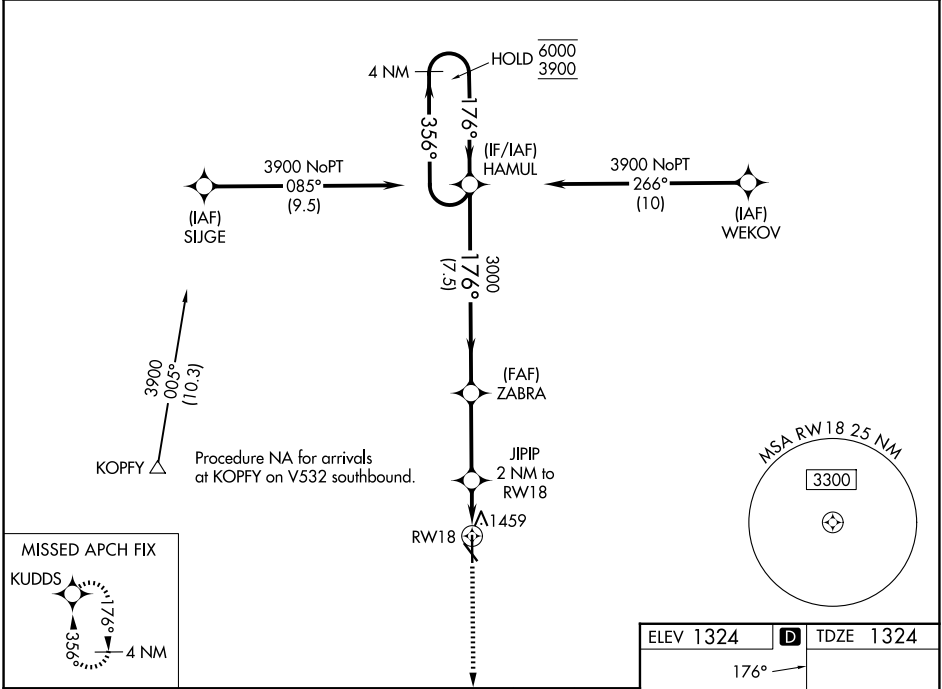
BEATRICE MUNI (BIE)

RNP APCH - GPS.

**⚠** Rwy 18 helicopter visibility reduction below 3/4 SM NA. For uncompensated Baro-VNAV systems, LNAV/VNAV NA below -17°C or above 54°C.

MISSED APPROACH: Climb to 3600 direct KUDD5 and hold.

AWOS-3 <b>125.325</b>	MINNEAPOLIS CENTER <b>126.4 317.7</b>	UNICOM <b>122.8 (CTAF) 0</b>
--------------------------	--	---------------------------------



CATEGORY	A	B	C	D
LPV DA	1574-3/4		250 (300-3/4)	
LNAV/VNAV DA	1670-1		346 (400-1)	
LNAV MDA	1760-1	436 (500-1)	1760-1 1/4	436 (500-1 1/4)
CIRCLING	1820-1 496 (500-1)		2000-2 676 (700-2)	2100-2 1/2 776 (800-2 1/2)

NC-2, 14 MAY 2026 to 11 JUN 2026

NC-2, 14 MAY 2026 to 11 JUN 2026