

LOC/DME I-EAU <b>109.5</b> Chan <b>32</b>	APP CRS <b>224°</b>	Rwy Ldg TDZE Apt Elev	<b>7301</b> <b>913</b> <b>913</b>
---	------------------------	-----------------------------	---

# ILS or LOC RWY 22

CHIPPEWA VALLEY RGNL (EAU)

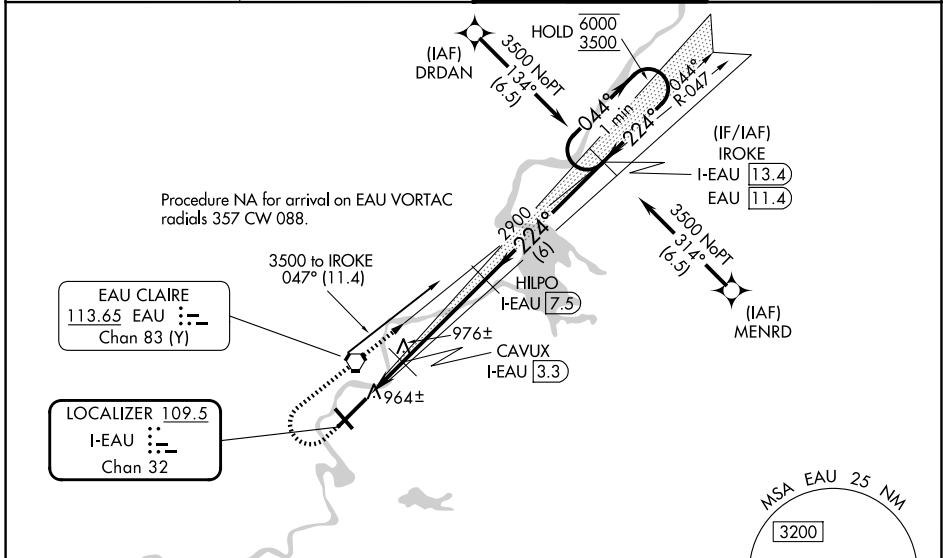
From DRDAN and MENRD RNAV-1 GPS required.  
DME required.

**⚠** For inop ALS increase S-LOC 22 Cat C and D visibility to  $\frac{3}{4}$  SM. For inop ALS when using Rice Lake altimeter setting, increase S-ILS 22 all Cats visibility to 1 SM. When local altimeter setting not received, use Rice Lake altimeter setting and increase DA 110 feet and all MDA 120 feet, increase S-LOC 22 Cat C and D and Circling Cat C visibility  $\frac{1}{4}$  SM. VDP NA when using Rice Lake altimeter setting.

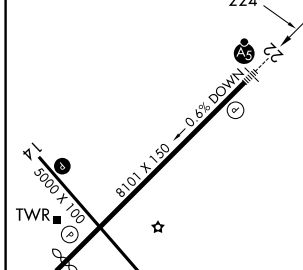
**MALSR**  
AS

**MISSED APPROACH:** Climb to 1600 then climbing right turn to 3500 on EAU VORTAC R-047 to IROKE/I-EAU LOC/DME 13.4 DME and hold.

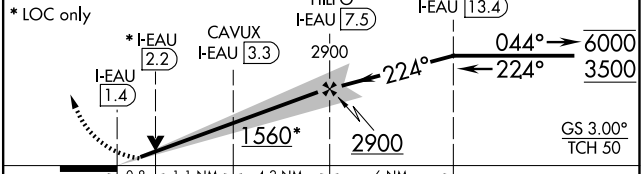
ATIS <b>126.025</b>	MINNEAPOLIS CENTER <b>125.3 335.6</b>	EAU CLAIRE TOWER ★ <b>118.575 (CTAF)</b>	GND CON <b>120.925</b>
------------------------	--	---	---------------------------



ELEV 913	<b>D</b>	TDZE 913
HIRL Rwy 4-22		
MIRL Rwy 14-32		
REIL Rwy 4 and 14		



1600	3500	IROKE I-EAU 13.4	Use I-EAU DME when on the localizer course.	One Minute Holding Pattern
------	------	------------------	---	----------------------------



FAF to MAP 6.1 NM					
Knots	60	90	120	150	180
Min:Sec	6:06	4:04	3:03	2:26	2:02
CATEGORY	A	B	C	D	
S-ILS 22	1113- $\frac{1}{2}$		200 (200- $\frac{1}{2}$ )		
S-LOC 22	1220- $\frac{1}{2}$		307 (400- $\frac{1}{2}$ )		
CIRCLING	1480-1		1660-2 $\frac{1}{4}$		2200-3
	567 (600-1)		747 (800-2 $\frac{1}{4}$ )		1287 (1300-3)

EC-3, 14 MAY 2026 to 11 JUN 2026

EC-3, 14 MAY 2026 to 11 JUN 2026