

WAAS CH 40417 W22A	APP CRS 224°	Rwy Ldg TDZE Apr Elev	6701 805 808
--	------------------------	-----------------------------	---

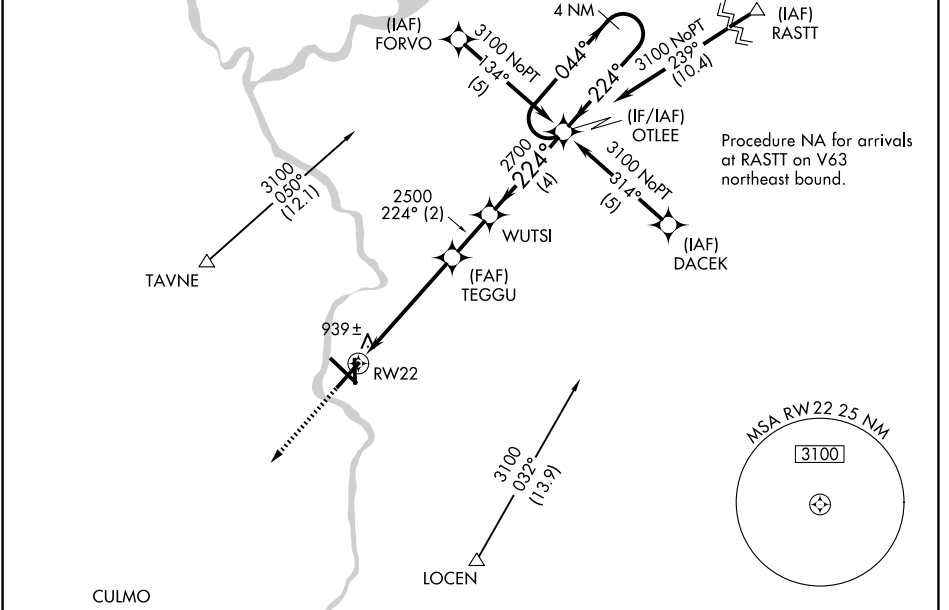
RNAV (GPS) RWY 22

SOUTHERN WISCONSIN RGNL (JVL)

⚠ Circling to Rwy 18 NA at night. Baro-VNAV NA when using Rockford altimeter setting. For uncompensated Baro-VNAV systems, LNAV/VNAV NA below -16°C (4°F) or above 47°C (116°F). DME/DME RNP-0.3 NA. Visibility reduction by helicopters NA. When local altimeter setting not received, use Rockford altimeter setting and increase LPV DA to 1189 feet, LNAV/VNAV DA to 1313 feet, and all MDAs 80 feet; increase LPV all Cats visibility ¼ SM, LNAV/VNAV all Cats visibility ½ SM, LNAV Cats C/D visibility ¾ SM and Circling Cats C/D visibility ¼ SM. VDP NA with Rockford altimeter setting.

MISSED APPROACH:
Climb to 3100 direct CULMO and hold.

ATIS 128.25	ROCKFORD APP CON 121.0 327.0	JANESVILLE TOWER ★ 118.8 (CTAF) 225.4	GND CON 121.65	UNICOM 122.95
-----------------------	--	---	--------------------------	-------------------------



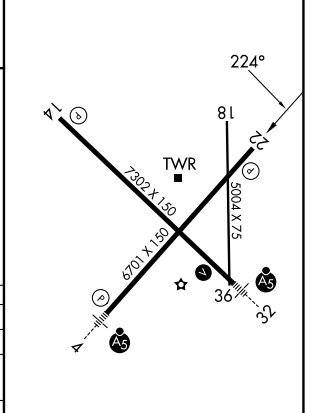
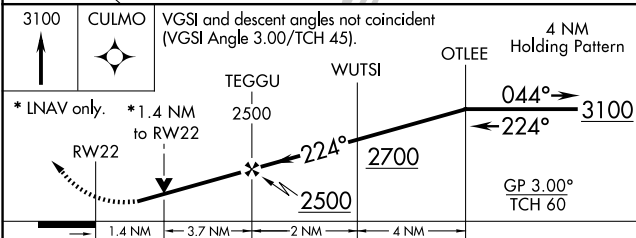
Procedure NA for arrivals at RASTT on V63 northeast bound.

EC-3, 14 MAY 2026 to 11 JUN 2026

EC-3, 14 MAY 2026 to 11 JUN 2026



ELEV 808	D TDZE 805
----------	-------------------



CATEGORY	A	B	C	D
LPV DA	1120-1		315 (400-1)	
LNAV/VNAV DA	1244-1½		439 (500-1½)	
LNAV MDA	1320-1	515 (600-1)	1320-1½ 515 (600-1½)	1320-1¾ 515 (600-1¾)
CIRCLING	1320-1	512 (600-1)	1420-1¾ 612 (700-1¾)	1460-2 652 (700-2)

REIL Rwy 14 and 22
MIRL Rwy 18-36
HIRL Rwy 4-22 and 14-32