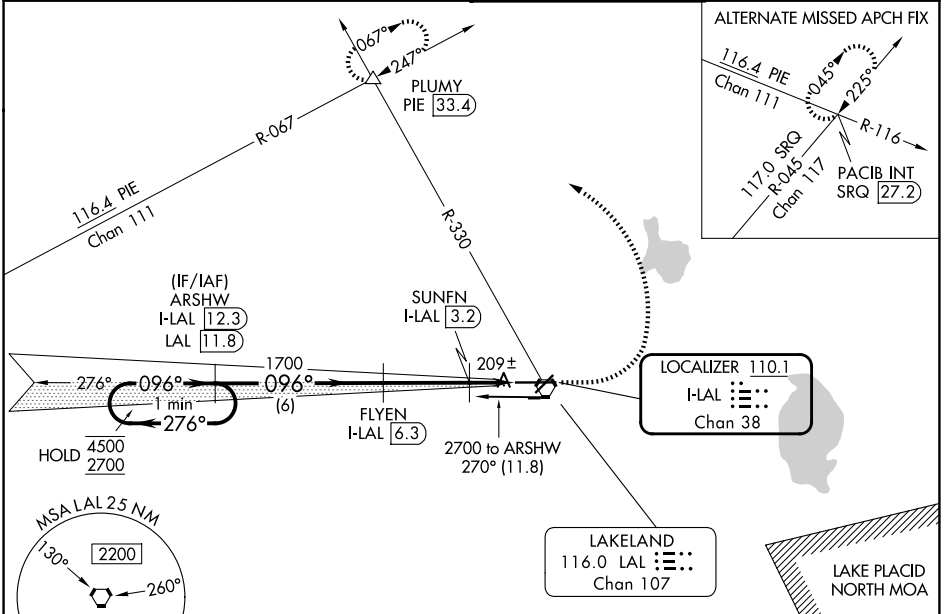


LOC/DME I-LAL 110.1 Chan 38	APP CRS 096°	Rwy Ldg TDZE 132 Apt Elev 142
---	------------------------	---

ILS or LOC RWY 10

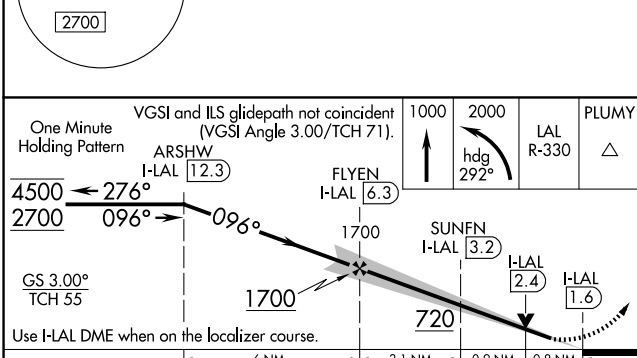
LAKELAND LINDER INTL (LAL)

DME required.		ALSIF-2	MISSED APPROACH: Climb to 1000 then climbing left turn to 2000 on heading 292° and on LAL VORTAC R-330 to PLUMY INT/PIE 33.4 DME and hold.
Circling NA to Rwys 8 and 26.			
ATIS 118.025	TAMPA APP CON 120.65 290.3	LAKELAND TOWER 124.5 236.775	GND CON 121.4



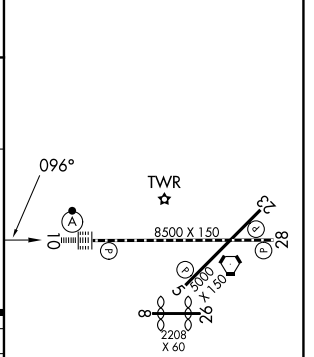
SE-3, 14 MAY 2026 to 11 JUN 2026

SE-3, 14 MAY 2026 to 11 JUN 2026



ELEV 142	TDZE 132
----------	----------

CATEGORY	A	B	C	D
S-ILS 10		332/18	200 (200-1/2)	
S-LOC 10		460/24	328 (400-1/2)	
CIRCLING	600-1 458 (500-1)	660-1 518 (600-1)	720-1 1/2 578 (600-1 1/2)	840-2 1/4 698 (700-2 1/4)



TDZ/CL Rwy 10 HIRL Rwys 5-23 and 10-28
