

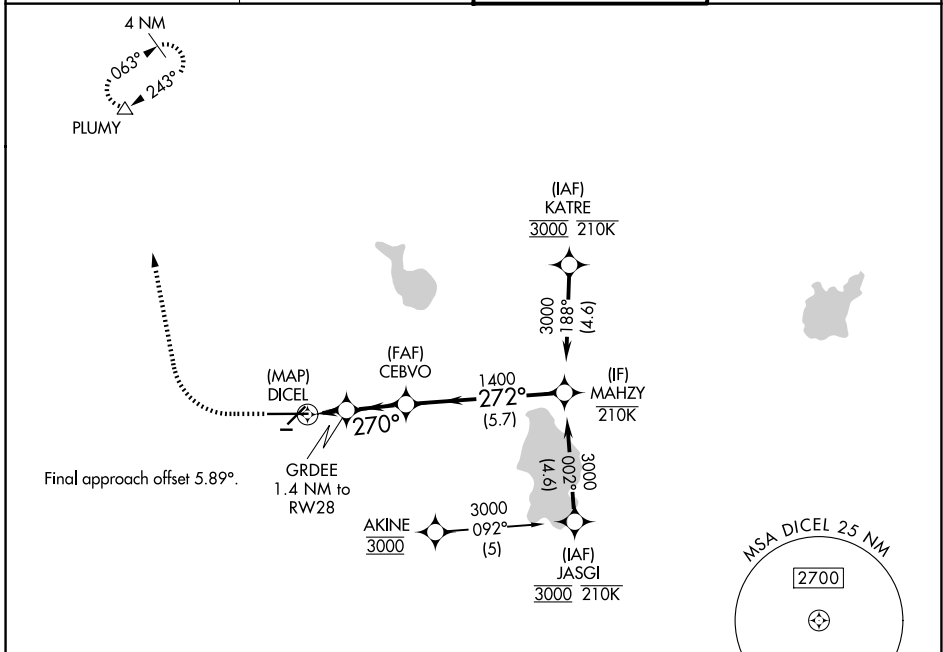
APP CRS	Rwy Ldg	8500
270°	TDZE	142
	Apt Elev	142

RNAV (GPS) Y RWY 28

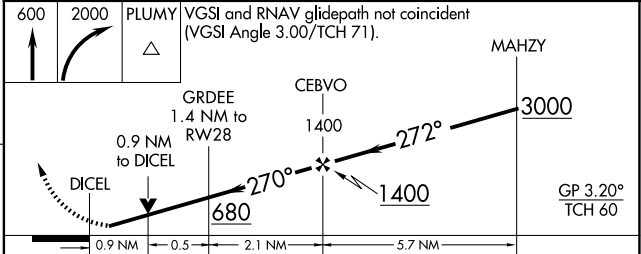
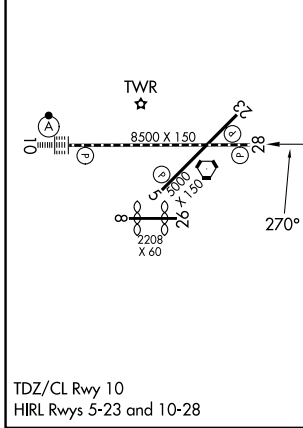
LAKELAND LINDER INTL (LAL)

RNP APCH - GPS.		MISSED APPROACH: Climb to 600 then climbing right turn to 2000 direct PLUMY and hold.	
		Circling Rwy 08, 26 NA. For uncompensated Baro-VNAV systems, LNAV/VNAV NA below -15°C or above 54°C. Rwy 28 helicopter visibility reduction below RVR 4000 NA.	

ATIS 118.025	TAMPA APP CON 120.65 290.3	LAKELAND TOWER 124.5 236.775	GND CON 121.4
------------------------	--------------------------------------	--	-------------------------



ELEV 142	D	TDZE 142
----------	----------	----------



CATEGORY	A	B	C	D
LNAV/VNAV DA		455/45	313 (400-7%)	
LNAV MDA		500/55	358 (400-1)	
CIRCLING	600-1	458 (500-1)	720-1½ 578 (600-1½)	840-2¼ 698 (700-2¼)

LAKELAND, FLORIDA
Orig 03OCT24

27°59'N-82°01'W

RNAV (GPS) Y RWY 28

SE-3, 14 MAY 2026 to 11 JUN 2026

SE-3, 14 MAY 2026 to 11 JUN 2026