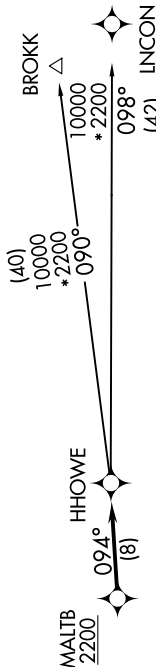
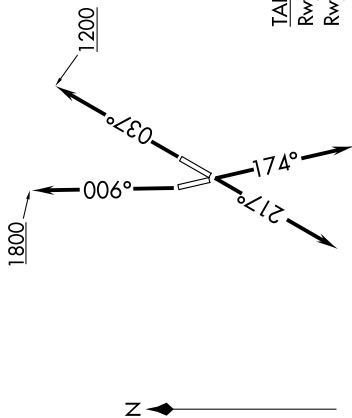
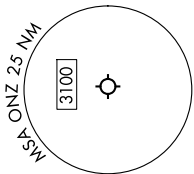


EC-1, 14 MAY 2026 to 11 JUN 2026

RNAV-1 DME/DME/IRU or GPS.
RADAR required.

DETROIT DEP CON
134.3 284.0
AWOS-3P
119.675
CTAF
123.0



NOTE: Turbojet departures at/above 10000, maintain 280K until advised by ATC.

NOTE: BROKK TRANSITION: For use by flights filed at or below FL270, or as assigned by ATC.

TAKEOFF MINIMUMS:

Rwy 4, 17, 22: Standard.

Rwy 35: Standard with minimum climb of 500' per NM to 1100.

NOTE: Chart not to scale.

DEPARTURE ROUTE DESCRIPTION

- TAKEOFF RUNWAY 4: Climb on heading 037° to 1200 then as assigned by ATC, thence....
- TAKEOFF RUNWAY 17: Climb on heading 174° or as assigned by ATC, thence....
- TAKEOFF RUNWAY 22: Climb on heading 217° or as assigned by ATC, thence....
- TAKEOFF RUNWAY 35: Climb on heading 006° to 1800 then as assigned by ATC, thence....

....for RADAR vectors to cross MALTB at or above 2200, then on track 094° to HHOWE, then on (transition). Maintain ATC assigned altitude, expect filed altitude 10 minutes after departure.

BROKK TRANSITION (HHOWE4.BROKK):
LINCON TRANSITION (HHOWE4.LINCON):

EC-1, 14 MAY 2026 to 11 JUN 2026