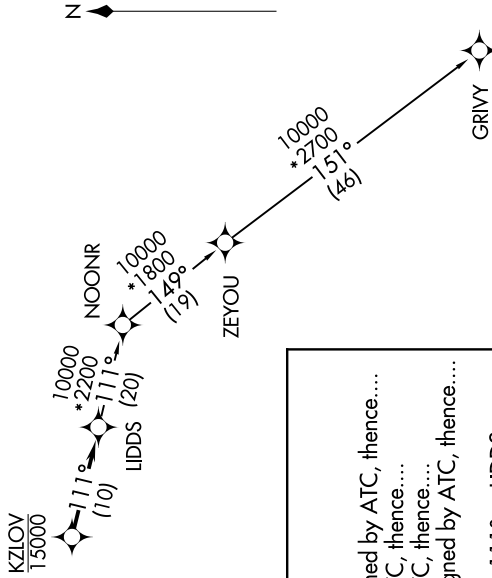
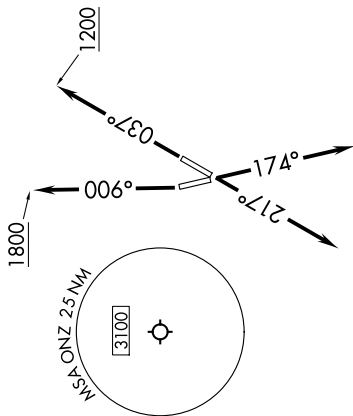


<b>TOP ALTITUDE: ASSIGNED BY ATC</b>	RNAV 1 - DME/DME/IRU or GPS. RADAR required. RADAR required for non-GPS equipped aircraft.
DETROIT DEP CON 134.3 284.0 AWOS-3P 119.675 CTAF 123.0	

**TAKEOFF MINIMUMS:**

Rwys 4, 17, 22: Standard.

Rwy 35: Standard with minimum climb of 500' per NM to 1100.



NOTE: Turbopjet departures at/above 10000, maintain 280K until advised by ATC.

**DEPARTURE ROUTE DESCRIPTION**

- TAKEOFF RUNWAY 4:** Climb on heading 037° to 1200 then as assigned by ATC, thence....
- TAKEOFF RUNWAY 17:** Climb on heading 174° or as assigned by ATC, thence....
- TAKEOFF RUNWAY 22:** Climb on heading 217° or as assigned by ATC, thence....
- TAKEOFF RUNWAY 35:** Climb on heading 006° then as assigned by ATC, thence....

.... for RADAR vectors to cross KZLOV at or below 15000, then on track 111° to LIDDS, then on (transition). Maintain ATC assigned altitude, expect filed altitude 10 minutes after departure.

**GRIVY TRANSITION (LIDDS4.GRIVY):**

NOTE: Chart not to scale.