

EC-1, 14 MAY 2026 to 11 JUN 2026

DEPARTURE ROUTE DESCRIPTION

TAKEOFF RUNWAY 4: Climb on heading 037° to 1200 then as assigned by ATC, thence....

TAKEOFF RUNWAY 17: Climb on heading 174° or as assigned by ATC, thence....

TAKEOFF RUNWAY 22: Climb on heading 217° or as assigned by ATC, thence....

TAKEOFF RUNWAY 35: Climb on heading 006° to 1800 then as assigned by ATC, thence....

....for RADAR vectors to JWELS, then on track 218° to SNDRS, then on (transition). Maintain ATC assigned altitude, expect filed altitude 10 minutes after departure.

BGHRT TRANSITION (SNDRS3.BGHRT):

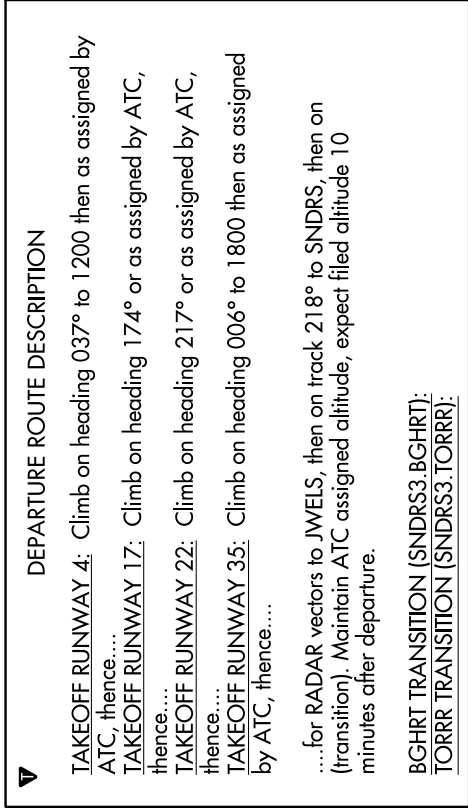
TORRR TRANSITION (SNDRS3.TORRR):

TOP ALTITUDE: ASSIGNED BY ATC

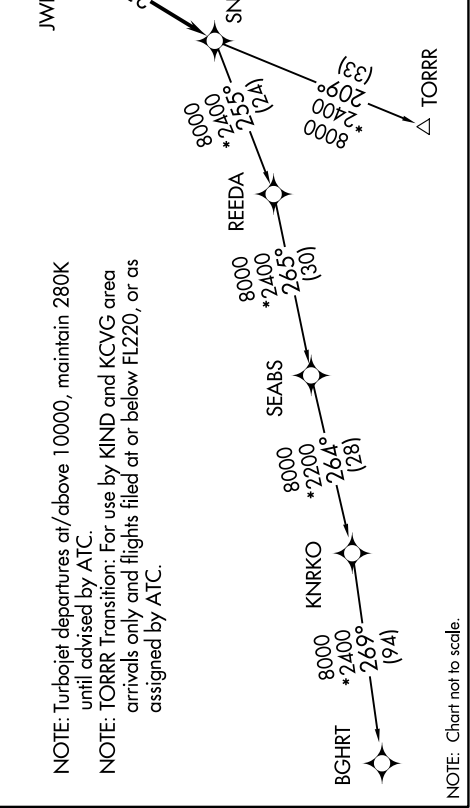
RNAV-1 DME/DME/IRU or GPS.

RADAR required.

DETROIT DEP CON
134.3 284.0
AWOS-3P
119.675
CTAF
123.0



TAKEOFF MINIMUMS:
Rwys 4, 17, 22: Standard.
Rwy 35: Standard with minimum climb of 500' per NM to 1100.



EC-1, 14 MAY 2026 to 11 JUN 2026