

WAAS CH 61399 W10A	APP CRS 108°	Rwy Ldg TDZE Apt Elev	6500 337 342
--	------------------------	-----------------------------	---

RNAV (GPS) RWY 10

CAPE GIRARDEAU RGNL (CGI)

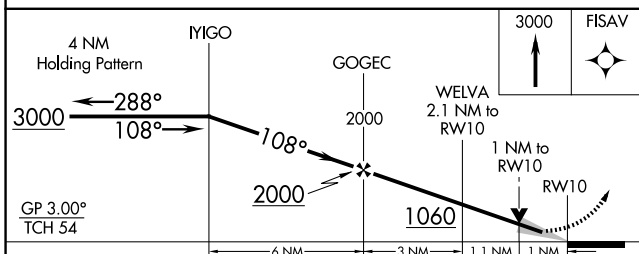
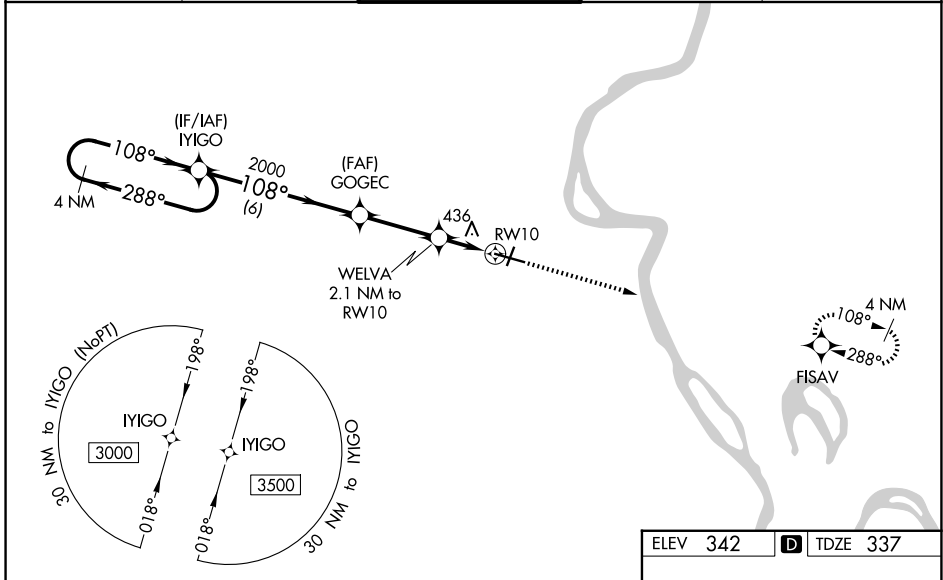
RNP APCH - GPS.

⚠ For uncompensated Baro-VNAV systems, LNAV/VNAV NA below -17°C or above 54°C. When local altimeter setting not received, use Cairo altimeter setting and increase LPV DA to 585 feet, LNAV/VNAV DA to 761 feet, and all visibilities 1/8 SM. Increase all MDAs 60 feet and LNAV Cat C/D visibility 1/8 SM, and Circling Cats C/D visibility to 1/4 SM. Baro-VNAV and VDP NA when using Cairo Rgnl altimeter setting. For inop ALS, increase LNAV/VNAV visibility all Cats and LNAV visibility Cat C/D to 1 SM. For inop ALS, when using Cairo altimeter setting, increase LNAV/VNAV all Cats and LNAV Cat C/D visibility to 1 SM.



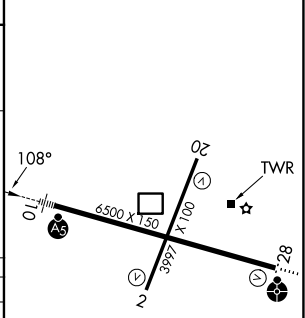
MISSED APPROACH:
Climb to 3000 direct FISAV and hold.

ASOS 120.55	MEMPHIS CENTER 133.65 292.15	CAPE GIRARDEAU TOWER ★ 125.525 (CTAF) 0	GND CON 124.7	UNICOM 122.95
-----------------------	--	---	-------------------------	-------------------------



ELEV 342	D TDZE 337
----------	-------------------

CATEGORY	A	B	C	D
LPV DA		537-1/2	200 (200-1/2)	
LNAV/VNAV DA		713-5/8	376 (400-5/8)	
LNAV MDA	700-1/2	363 (400-1/2)	700-5/8	363 (400-5/8)
CIRCLING	880-1 538 (600-1)	960-1 618 (700-1)	1000-1 3/4 658 (700-1 3/4)	1080-2 1/4 738 (800-2 1/4)



MIRL Rwy 2-20 **0**
HIRL Rwy 10-28 **0**

NC-3, 14 MAY 2026 to 11 JUN 2026

NC-3, 14 MAY 2026 to 11 JUN 2026