

WAAS CH <b>93832</b> <b>W02A</b>	APP CRS <b>023°</b>	Rwy Ldg TDZE <b>342</b> Apt Elev <b>342</b>	<b>3997</b>
--	------------------------	---	-------------

# RNAV (GPS) RWY 2

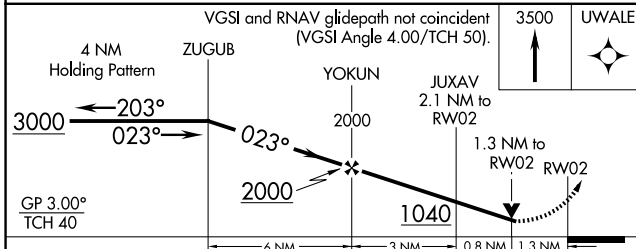
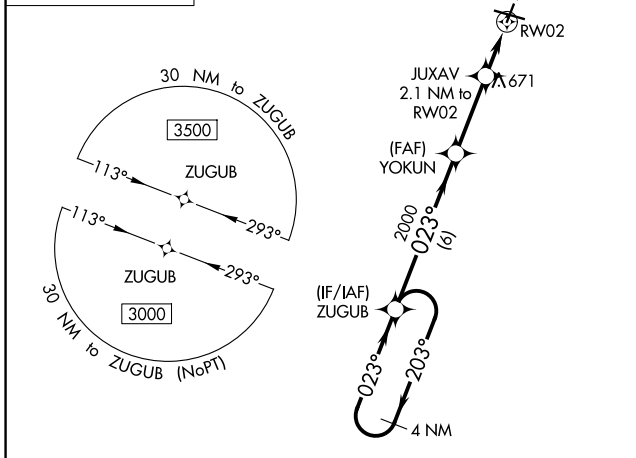
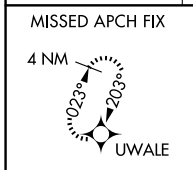
CAPE GIRARDEAU RGNL (CGI)

RNP APCH - GPS.

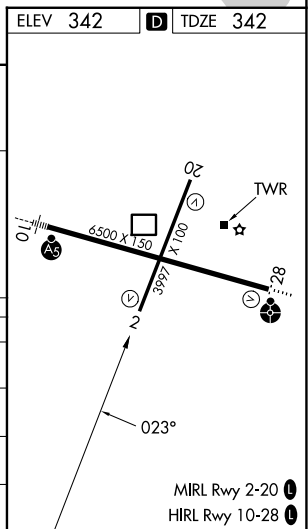
**⚠** For uncompensated Baro-VNAV systems, LNAV/VNAV NA below -17°C or above 54°C. When local altimeter setting not received, use Cairo altimeter setting and increase LPV DA to 849 feet, LNAV/VNAV DA to 905 feet, and all visibilities ¼ SM. Increase all MDAs 60 feet and LNAV visibility Cat C/D ⅓ SM, and Circling visibility Cat C/D ¼ SM. Rwy 2 helicopter visibility reduction below ¾ SM NA. Baro-VNAV and VDP NA when using Cairo Rgnl altimeter setting.

MISSED APPROACH: Climb to 3500 direct UWALE and hold, continue climb-in-hold to 3500.

ASOS <b>120.55</b>	MEMPHIS CENTER <b>133.65 292.15</b>	<b>CAPE GIRARDEAU TOWER *</b> <b>125.525 (CTAF) 1</b>	GND CON <b>124.7</b>	UNICOM <b>122.95</b>
-----------------------	--	--	-------------------------	-------------------------



CATEGORY	A	B	C	D
LPV DA		801-1⅓	459 (500-1⅓)	
LNAV/VNAV DA		857-1⅓	515 (600-1⅓)	
LNAV MDA	940-1	598 (600-1)	940-1¾	598 (600-1¾)
CIRCLING	940-1 598 (600-1)	960-1 618 (700-1)	1000-1¾ 658 (700-1¾)	1080-2¼ 738 (800-2¼)



NC-3, 14 MAY 2026 to 11 JUN 2026

NC-3, 14 MAY 2026 to 11 JUN 2026