

WAAS CH <b>42832</b> <b>W20A</b>	APP CRS <b>203°</b>	Rwy Ldg TDZE Apt Elev	<b>3997</b> <b>339</b> <b>342</b>
--	------------------------	-----------------------------	---

# RNAV (GPS) RWY 20

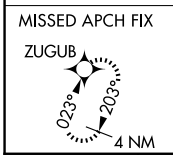
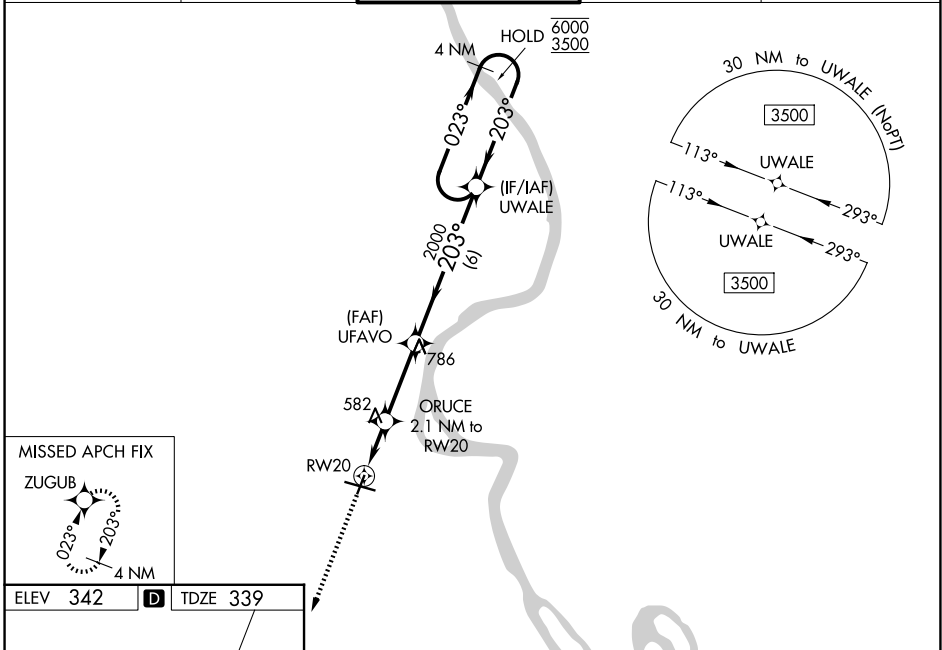
CAPE GIRARDEAU RGNL (CGI)

RNP APCH-GPS.

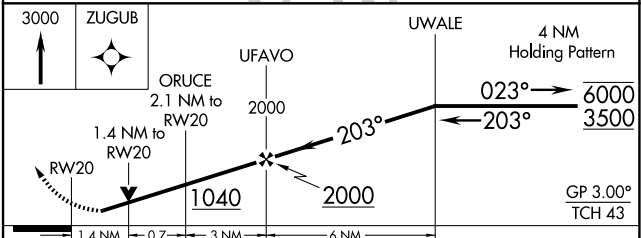
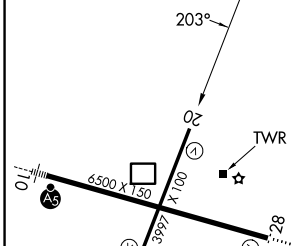
**⚠** For uncompensated Baro-VNAV systems, LNAV/VNAV NA below -14°C or above 54°C. Rwy 20 helicopter visibility reduction below 3/4 SM NA. Baro-VNAV and VDP NA when using CIR altimeter setting. When local altimeter setting not received, use CIR altimeter setting and increase LPV DA to 637 feet. Increase LNAV/VNAV DA to 652 feet; increase all MDAs 60 feet and LNAV and Circling visibility Cat C/D 1/4 SM.

MISSED APPROACH: Climb to 3000 direct ZUGUB and hold, continue climb-in-hold to 3000.

ASOS <b>120.55</b>	MEMPHIS CENTER <b>133.65 292.15</b>	CAPE GIRARDEAU TOWER * <b>125.525</b> (CTAF) <b>1</b>	GND CON <b>124.7</b>	UNICOM <b>122.95</b>
-----------------------	--	--	-------------------------	-------------------------



ELEV 342	<b>D</b>	TDZE 339
----------	----------	----------



CATEGORY	A	B	C	D
LPV DA		589-1	250 (300-1)	
LNAV/VNAV DA		604-1	265 (300-1)	
LNAV MDA	840-1	501 (500-1)	840-1 3/8	501 (500-1 3/8)
CIRCLING	880-1 538 (600-1)	960-1 618 (700-1)	1000-1 3/4 658 (700-1 3/4)	1080-2 1/4 738 (800-2 1/4)

NC-3, 14 MAY 2026 to 11 JUN 2026

NC-3, 14 MAY 2026 to 11 JUN 2026