

WAAS CH 90199 W28A	APP CRS 288°	Rwy Ldg TDZE 341 Apt Elev 342
--	------------------------	---

RNAV (GPS) RWY 28

CAPE GIRARDEAU RGNL (CGI)

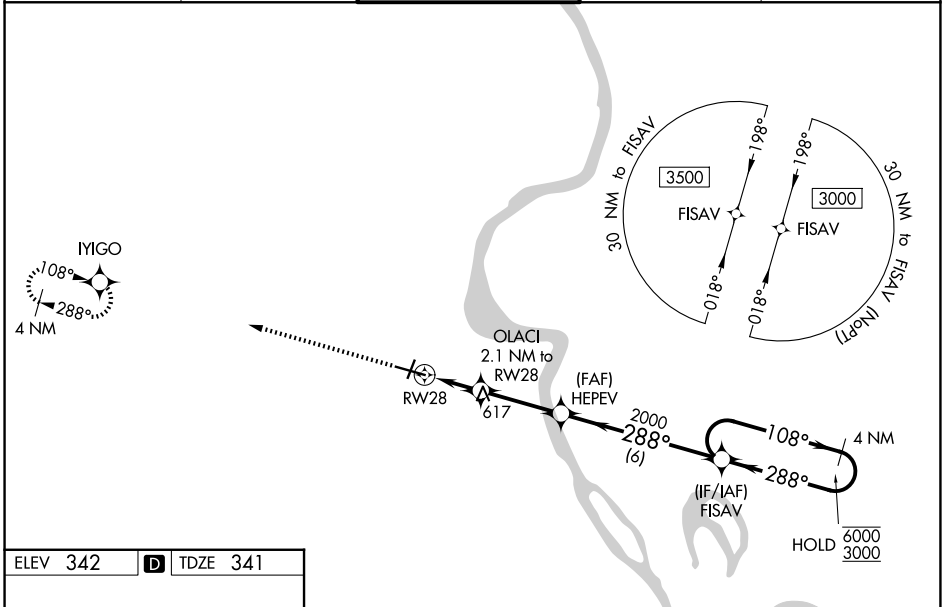
RNP APCH - GPS.

⚠ For uncompensated Baro-VNAV systems, LNAV/VNAV NA below -1.4°C or above 54°C. Baro and VDP NA when using CIR altimeter setting. Rwy 28 helicopter visibility reduction below 3/4 SM NA. Inop table does not apply to LNAV/VNAV all Cats and LNAV Cats A and B. For inop ALS, increase LPV Cat A and B visibility to 1 1/8 SM. When local altimeter setting not received, use CIR altimeter setting and increase LPV DA to 771 feet and all visibilities 1/8 SM. Increase LNAV/VNAV DA to 896 feet; increase all MDAs 60 feet and LNAV and Circling visibility Cat C/D 1/4 SM.

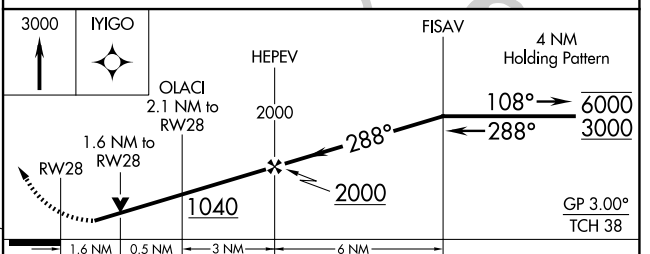
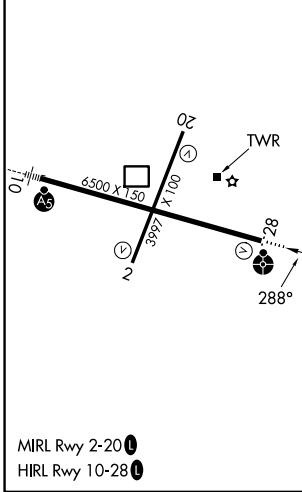
ODALS

MISSED APPROACH: Climb to 3000 direct IYGO and hold, continue climb-in-hold to 3000.

ASOS 120.55	MEMPHIS CENTER 133.65 292.15	CAPE GIRARDEAU TOWER * 125.525 (CTAF)	GND CON 124.7	UNICOM 122.95
-----------------------	--	---	-------------------------	-------------------------



ELEV 342	D	TDZE 341
----------	----------	----------



	A	B	C	D
LPV DA	723-1 382 (400-1)			
LNAV/VNAV DA	848-1 3/8 507 (600-1 3/8)			
LNAV MDA	880-1	539 (600-1)	880-1 3/8	539 (600-1 3/8)
CIRCLING	880-1 538 (600-1)	960-1 618 (700-1)	1000-1 3/4 658 (700-1 3/4)	1080-2 1/4 738 (800-2 1/4)

NC-3, 14 MAY 2026 to 11 JUN 2026

NC-3, 14 MAY 2026 to 11 JUN 2026