

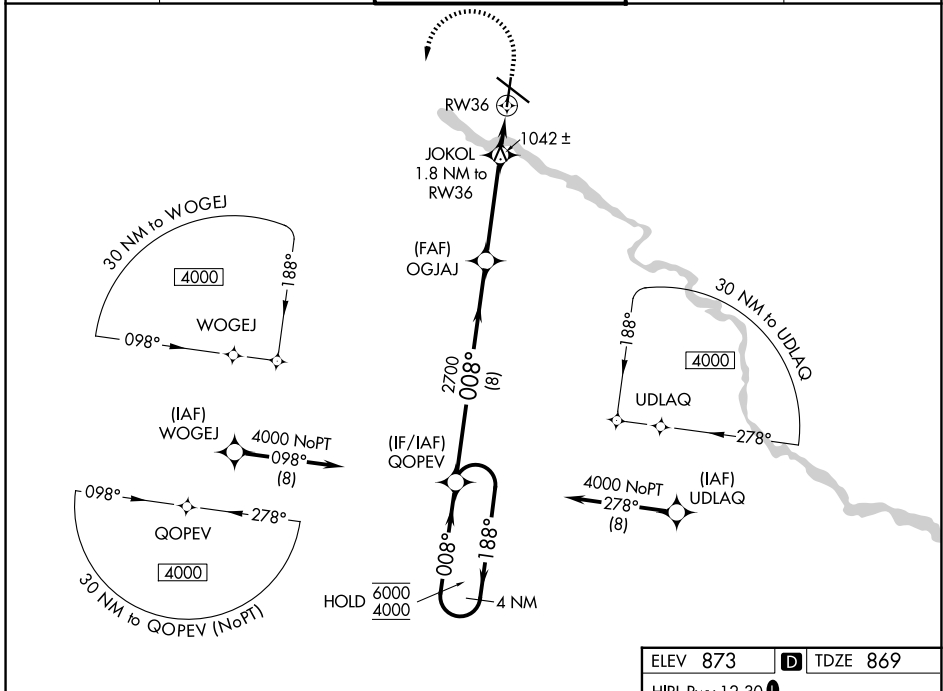
WAAS CH 48942 W36A	APP CRS 008°	Rwy Ldg TDZE Apt Elev	6003 869 873
--	------------------------	-----------------------------	---

RNAV (GPS) RWY 36

WATERLOO RGNL (A.I.O)

RNP APCH-GPS.	MISSED APPROACH: Climb to 2000 then climbing left turn to 4000 direct QOPEV and hold.
▼ ▲	For uncompensated Baro-VNAV systems, LNAV/VNAV NA below -20°C or above 54°C.

ATIS 120.65	DES MOINES APP CON * 118.9 251.15	WATERLOO TOWER * 125.075 (CTAF) 257.8	GND CON 121.9 269.1	UNICOM 122.95
-----------------------	---	---	-------------------------------	-------------------------



NC-3, 14 MAY 2026 to 11 JUN 2026

NC-3, 14 MAY 2026 to 11 JUN 2026

VGSI and RNAV glidepath not coincident. (VGSI Angle 3.00/TCH 51).		2000	4000	QOPEV
4 NM Holding Pattern		↑	↻	✧
6000	← 188°	2700	OGJAJ	JOKOL 1.8 NM to RW36
4000	→ 008°	2700	OGJAJ	* 1.2 NM to RW36
GP 3.00°	2700	* 1480		RW36
TCH 40	8 NM	3.8 NM	0.6 NM	1.2 NM
CATEGORY	A	B	C	D
LPV DA	1069-3/4		200 (200-3/4)	
LNAV/VNAV DA	1190-1		321 (400-1)	
LNAV MDA	1300-1	431 (500-1)	1300-1 1/4	431 (500-1 1/4)
CIRCLING	1360-1 487 (500-1)	1400-1 527 (600-1)	1480-1 3/4 607 (700-1 3/4)	1600-2 1/4 727 (800-2 1/4)

