

(PAWLN.LOVES1) 25275

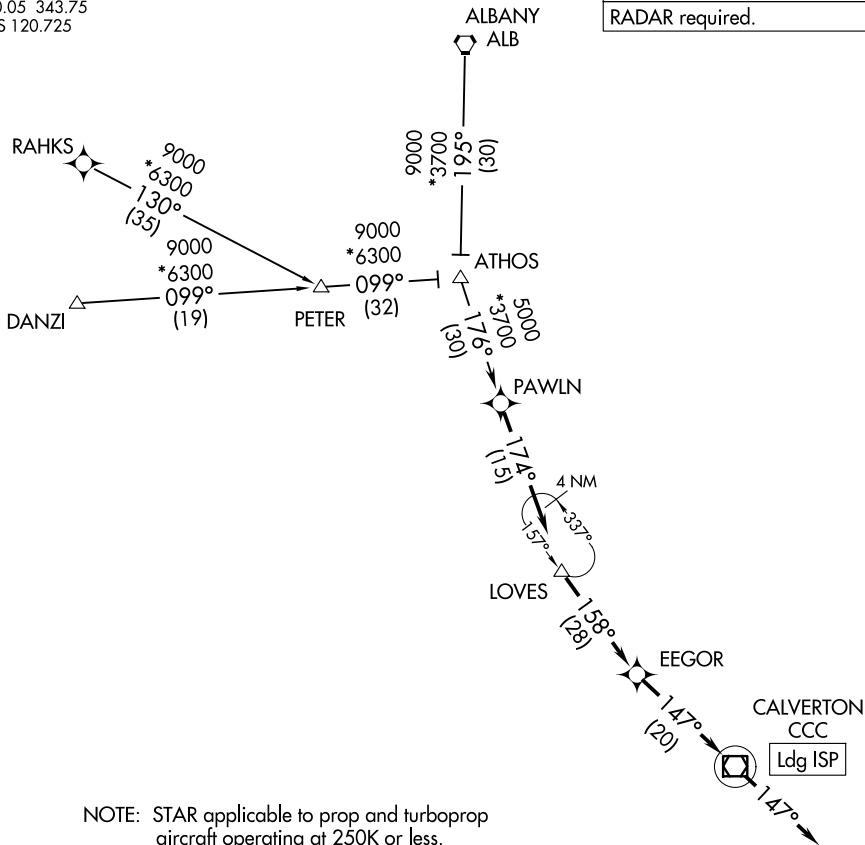
AL-948 (FAA)

LONG ISLAND MAC ARTHUR (ISP)  
NEW YORK, NEW YORK

# LOVES ONE ARRIVAL (RNAV)

NEW YORK APP CON  
120.05 343.75  
ATIS 120.725

RNAV1 - DME/DME/IRU or GPS.  
RADAR required.



NOTE: STAR applicable to prop and turboprop aircraft operating at 250K or less.  
NOTE: Procedure has a 17 NM segment over water.

NOTE: Chart not to scale.

## ARRIVAL ROUTE DESCRIPTION

- ALBANY TRANSITION (ALB.LOVES1)
- DANZI TRANSITION (DANZI.LOVES1)
- RAHKS TRANSITION (RAHKS.LOVES1)

From PAWLN on track 174° to LOVES, then on track 158° to EEGOR, then on track 147° to CCC VOR/DME, then on track 147°. Expect RADAR vectors to final approach course.

LOVES ONE ARRIVAL (RNAV)  
(PAWLN.LOVES1) 02OCT25

NEW YORK, NEW YORK  
LONG ISLAND MAC ARTHUR (ISP)

NE-2, 14 MAY 2026 to 11 JUN 2026

NE-2, 14 MAY 2026 to 11 JUN 2026