

WAAS CH <b>53620</b> <b>W15A</b>	APP CRS <b>149°</b>	Rwy Ldg <b>5186</b> TDZE <b>99</b> Apt Elev <b>99</b>
--	------------------------	---

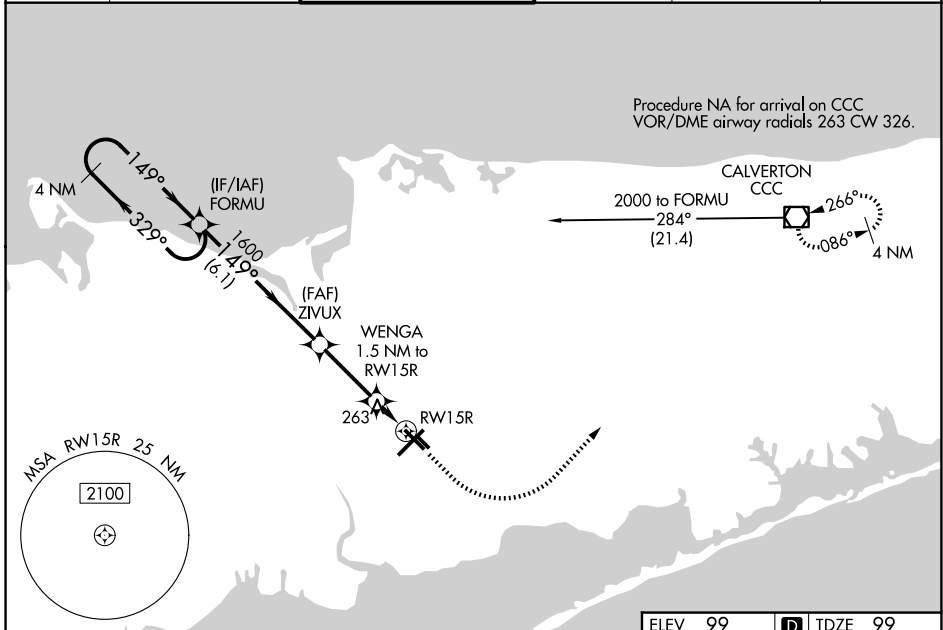
# RNAV (GPS) RWY 15R

LONG ISLAND MAC ARTHUR (ISP)

**⚠** Baro-VNAV NA when using Shirley altimeter setting. For uncompensated Baro-VNAV systems, procedure NA below -1.4°C (7°F) or above 46°C (115°F). DME/DME RNP-0.3 NA. When local altimeter setting not received, use Shirley altimeter setting and increase LPV DA to 442 feet, LNAV/VNAV DA to 575 feet and LNAV/VNAV visibility all Cats 1/8 mile; all MDAs 40 feet, LNAV C/D visibility 1/8 mile, and Circling C/D visibility 1/4 mile. Helicopter visibility reduction below 3/4 SM NA.

**⚠** MISSED APPROACH: Climb to 600 then climbing left turn to 2000 direct CCC VOR/DME and hold.

ATIS <b>120.725</b>	NEW YORK APP CON <b>120.05 343.75</b>	LONG ISLAND TOWER* <b>119.3 (CTAF) 0 335.5</b>	GND CON <b>135.3</b>	CLNC DEL <b>121.85</b>	UNICOM <b>122.95</b>
------------------------	--	---	-------------------------	---------------------------	-------------------------



NE-2, 14 MAY 2026 to 11 JUN 2026

NE-2, 14 MAY 2026 to 11 JUN 2026

ELEV 99		D TDZE 99		
VGSI and RNAV glidepath not coincident (VGSI Angle 3.10/TCH 46). 4 NM Holding Pattern FORMU 2000 ← 329° / 149° → GP 3.10° TCH 46 *NANV only. ZIVUX 1600 WENGA 1.5 NM to RWY 15R *640 RWY 15R 6.1 NM   2.9 NM   1.5 NM				
CATEGORY	A	B	C	D
LPV DA	414-1		315 (400-1)	
LNAV/VNAV DA	547-1 3/8		448 (500-1 3/8)	
LNAV MDA	520-1	421 (500-1)	520-1 1/4	421 (500-1 1/4)
CIRCLING	600-1 501 (600-1)	660-1 561 (600-1)	660-1 1/2 561 (600-1 1/2)	960-2 3/4 861 (900-2 3/4)
				MRL Rwy 15R-33L 0 HIRL Rwy 6-24 0