

WAAS CH 49120 W33A	APP CRS 329°	Rwy Ldg TDZE 89 Apt Elev 99	5186
--	------------------------	---	-------------

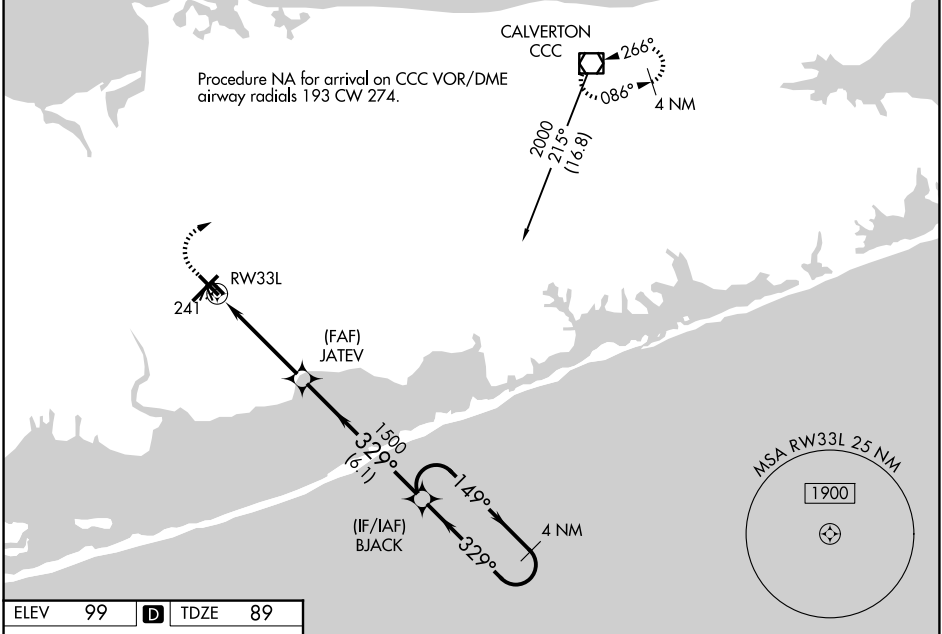
RNAV (GPS) RWY 33L

LONG ISLAND MAC ARTHUR (ISP)

⚠ For uncompensated Baro-VNAV systems, LNAV/VNAV NA below -14°C (7°F) or above 54°C (130°F).
⚠ DME/DME RNP-0.3 NA. When local altimeter setting not received, use Shirley altimeter setting and increase LPV DA to 367 feet, LNAV/VNAV DA to 440 feet and LPV and LNAV/VNAV visibility all Cats 1/8 mile, all MDA 40 feet, increase LNAV Cats C/D visibility 1/8 mile, and Circling Cats C/D visibility 1/4 mile. VDP and Baro-VNAV NA when using Shirley altimeter setting. Helicopter visibility reduction below 3/4 SM NA.

MISSED APPROACH:
 Climb to 600 then climbing right turn to 2000 direct CCC VOR/DME and hold.

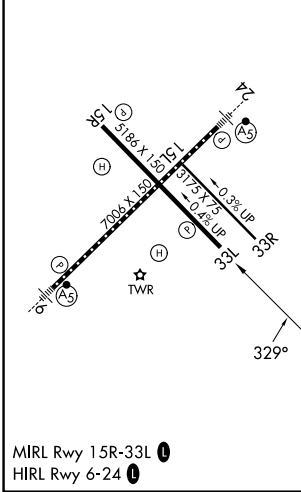
ATIS 120.725	NEW YORK APP CON 120.05 343.75	LONG ISLAND TOWER* 119.3 (CTAF) 0335.5	GND CON 135.3	CLNC DEL 121.85	UNICOM 122.95
------------------------	--	--	-------------------------	---------------------------	-------------------------



NE-2, 14 MAY 2026 to 11 JUN 2026

NE-2, 14 MAY 2026 to 11 JUN 2026

ELEV 99	D	TDZE 89
---------	----------	---------



600	2000	CCC	VGSi and RNAV glidepath not coincident (VGSi Angle 3.00/TCH 50).		4 NM Holding Pattern
* LNAV only.					
* 1.1 NM to RW33L					
RW33L					
JATEV 1500					
149° → 2000					
← 329°					
GP 3.00° TCH 45					
1.1	3.2 NM	6.1 NM			
CATEGORY	A	B	C	D	
LPV DA		339-7/8	250 (300-7/8)		
LNAV/VNAV DA		412-1 1/8	323 (400-1 1/8)		
LNAV MDA	500-1	411 (500-1)	500-1 1/4	411 (500-1 1/4)	
CIRCLING	600-1	660-1	660-1 1/2	960-2 3/4	
	501 (600-1)	561 (600-1)	561 (600-1 1/2)	861 (900-2 3/4)	