

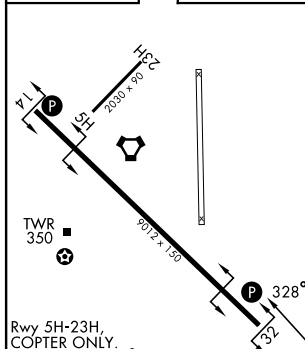
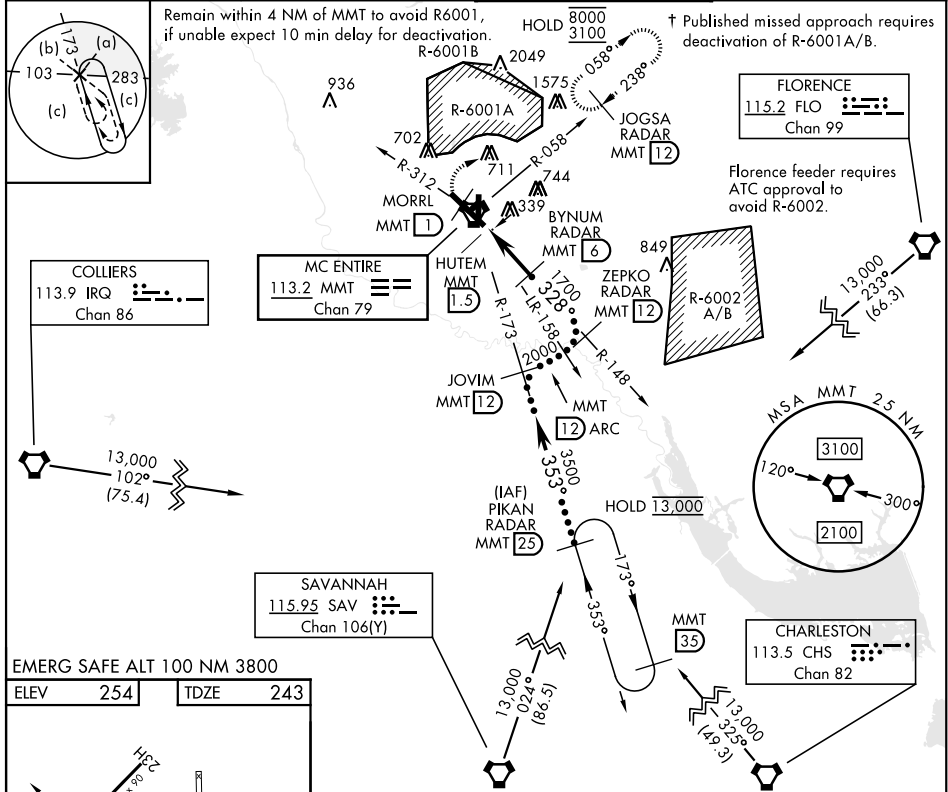
EASTOVER, SOUTH CAROLINA

# HI-TACAN RWY 32

VORTAC MMT <b>113.2</b> Chan <b>79</b>	APCH CRS <b>328°</b>	Rwy ldg TDZE <b>243</b> Arprt Elev <b>254</b>	[USAF]	MC ENTIRE JNGB (KMMT)
--	-------------------------	---	--------	-----------------------

† MISSED APPROACH: Climb to 1100 direct MORRL/1 DME then climbing right turn to 3100 intercept MMT R-058 direct JOGSA/12 DME and hold.

ATIS ★ <b>327.05</b>	SHAW APP CON <b>125.4 318.1</b>	TOWER ★ <b>132.4 (CTAF) 253.5</b>	GND CON <b>127.625 226.675</b>
-------------------------	------------------------------------	--------------------------------------	-----------------------------------



1100 MORRL MMT 1.5	3100 MMT R-058	JOGSA MMT 12	ZEPKO RADAR MMT 12
MMT VORTAC	HUTEM MMT 1.5	MMT 2.3	BYNUM RADAR MMT 6
MMT 1.5	MMT 2.3	BYNUM RADAR MMT 6	ZEPKO RADAR MMT 12
0.5	4.5 NM	1700	2000
2.67°	TCH 48	328°	
CATEGORY	C	D	E
S-32 *	640/40	397	(400-¾)
CIRCLING	880-1¾ 626 (700-1¾)	940-2½ 686 (700-2½)	1020-2¾ 766 (800-2¾)

EASTOVER, SOUTH CAROLINA 33°55'N-80°48'W MC ENTIRE JNGB (KMMT)

Amtd 4 25MAY17

# HI-TACAN RWY 32

SE-2, 14 MAY 2026 to 11 JUN 2026

SE-2, 14 MAY 2026 to 11 JUN 2026