

EASTOVER, SOUTH CAROLINA

TACAN RWY 14

VORTAC MMT 113.2 Chan 79	APCH CRS 132°	Rwy Idg TDZE Arprt Elev 9012 251 254
--	-------------------------	--

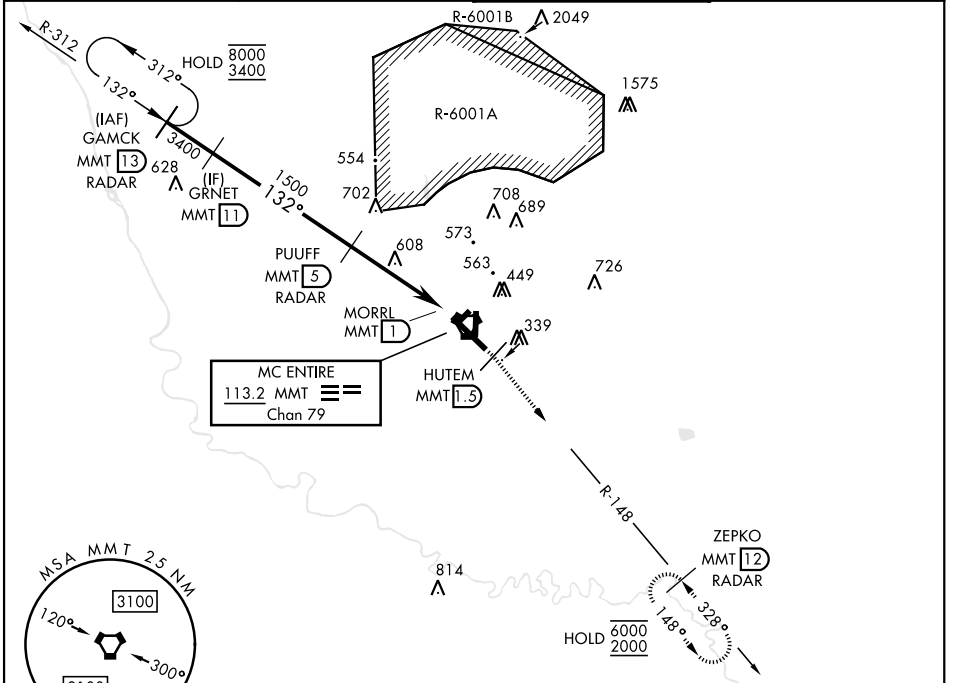
[USAF]

MC ENTIRE JNGB (KMMT)

* Circling to Rwy 05H-23H not authorized at night.

MISSED APPROACH: Climb to 1100 direct HUTEM/1.5 DME then climbing right turn to 2000 intercept MMT R-148 direct ZEPKO/12 DME and hold.

ATIS ★ 327.05	SHAW APP CON 125.4 318.1	TOWER ★ 132.4 (CTAF) 253.5	GND CON 127.625 226.675
-------------------------	------------------------------------	--------------------------------------	-----------------------------------

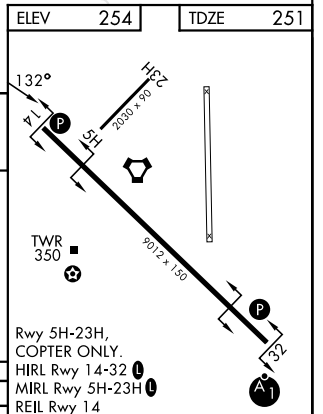
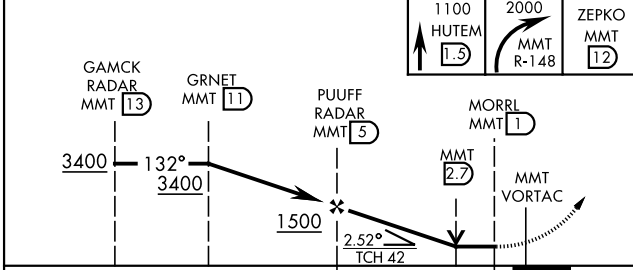


SE-2, 14 MAY 2026 to 11 JUN 2026

SE-2, 14 MAY 2026 to 11 JUN 2026

ELEV	254	TDZE	251
------	-----	------	-----

EMERG SAFE ALT 100 NM 3800



Rwy 5H-23H, COPTER ONLY.
HIRL Rwy 14-32
MIRL Rwy 5H-23H
REL Rwy 14

CATEGORY	A	B	C	D	E
S-14	880-1	629 (700-1)	880-1 $\frac{3}{4}$	629 (700-1 $\frac{3}{4}$)	
CIRCLING *	880-1	626 (700-1)	880-1 $\frac{3}{4}$	1020-2 $\frac{1}{2}$	1020-2 $\frac{3}{4}$

FAF to MAP 4.0 NM					
Knots	60	90	120	150	180
Min:Sec	4:00	2:40	2:00	1:36	1:20

EASTOVER, SOUTH CAROLINA

33°55'N-80°48'W

MC ENTIRE JNGB (KMMT)

Amdt 1 25MAY17

TACAN RWY 14