

LOS ALAMITOS, CALIFORNIA


RNAV (GPS) RWY 22L

(USA)
LOS ALAMITOS AAF (JOINT FORCES TRAINING BASE JFTB) (KSLI)

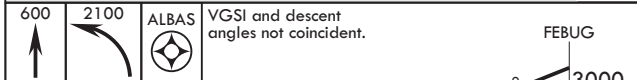
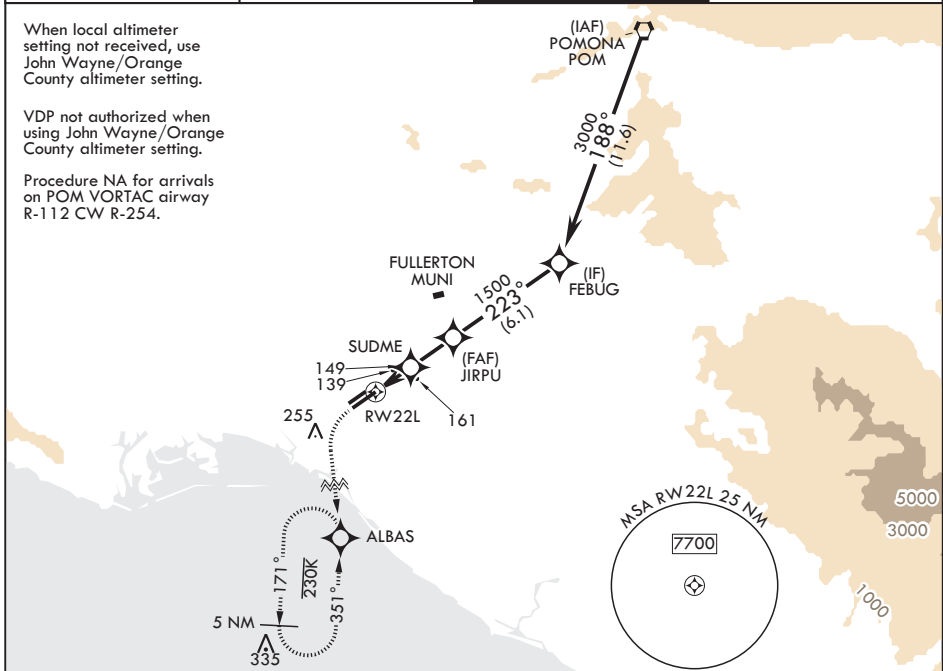
APCH CRS 223°	Rwy Idg 8001 TDZE 36 Arpt Elev 36
-------------------------	--

RNP APCH- GPS

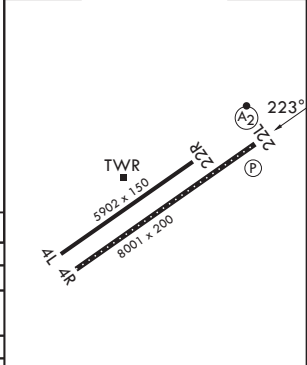
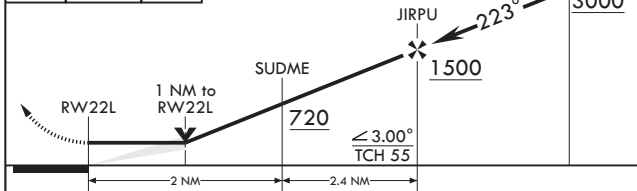
▼ * When ALS inop, increase CAT CD vis to 1 1/8 miles.
** When ALS inop, using John Wayne/Orange County altimeter setting, increase CAT CD vis to 1 1/4 miles.
*** Circling not authorized N of Rwy 4L-22R. Circling not authorized to Rwy 4R at night.

SALSF  MISSED APPROACH: Climb to 600 then climbing left turn to 2100 direct ALBAS and hold.

ATIS* 118.875 379.975	SOCAL APP CON/DEP CON 125.35 316.125	TOWER* 123.85 (CTAF) 251.15	GND CON 126.95 257.95
---------------------------------	--	---------------------------------------	---------------------------------



ELEV 36	TDZE 36
---------	---------



CATEGORY	A	B	C	D
LNAV MDA*	420-1		384	(400-1)
CIRCLING***	440-1 404 (500-1)	500-1 464 (500-1)	600-1½ 564 (600-1½)	600-2 564 (600-2)
JOHN WAYNE/ORANGE COUNTY ALTIMETER SETTING MINIMUMS				
LNAV MDA**	460-1		424	(500-1)
CIRCLING***	480-1 444 (500-1)	540-1 504 (600-1)	640-1¼ 604 (700-1¼)	640-2 604 (700-2)

HIRL Rwy 4R-22L
MIRL Rwy 4L-22R
REIL Rwy 22L

LOS ALAMITOS, CALIFORNIA
Amdt 2 11JUL24

LOS ALAMITOS AAF (JOINT FORCES TRAINING BASE JFTB) (KSLI)
33°47'N - 118°03'W **RNAV (GPS) RWY 22L**

SW-3, 14 MAY 2026 to 11 JUN 2026

SW-3, 14 MAY 2026 to 11 JUN 2026