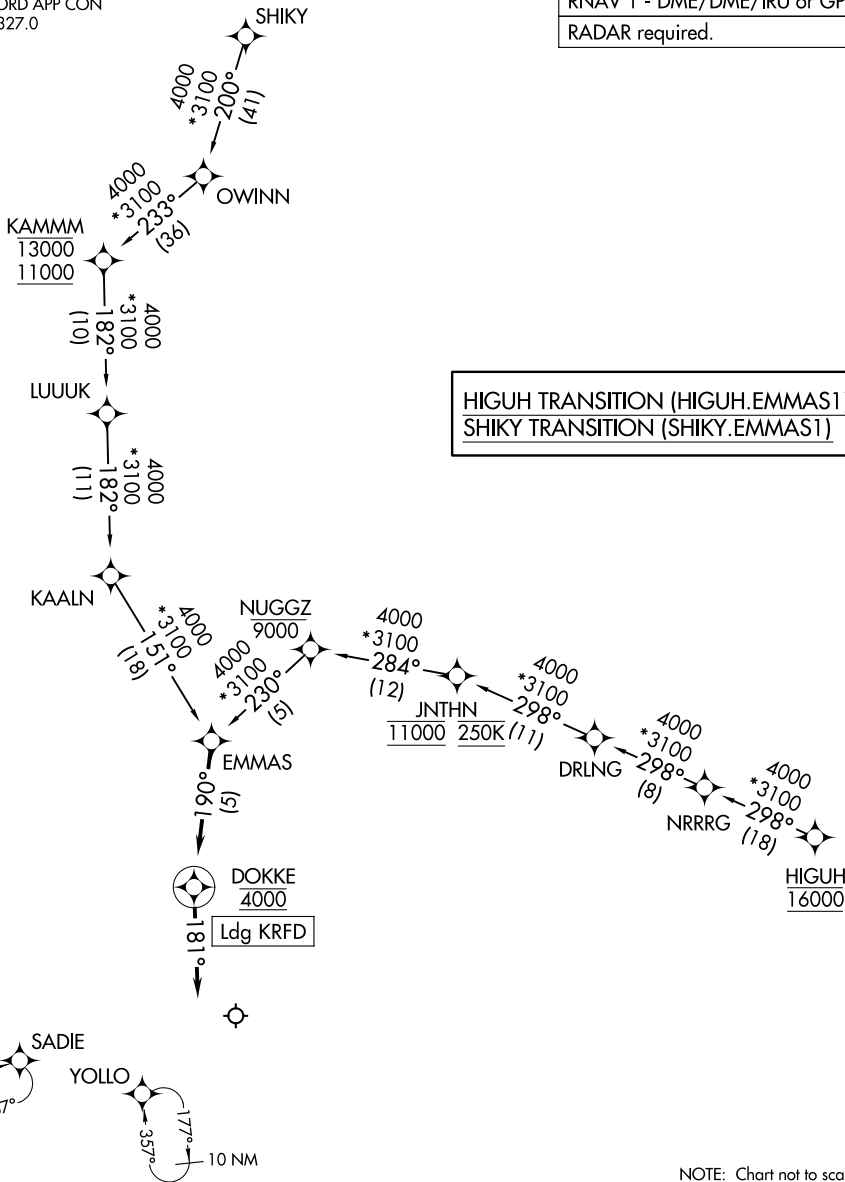


EMMAS ONE ARRIVAL (RNAV)

ROCKFORD APP CON
121.0 327.0
ATIS
127.6

RNAV 1 - DME/DME/IRU or GPS.

RADAR required.



EC-3, 14 MAY 2026 to 11 JUN 2026

EC-3, 14 MAY 2026 to 11 JUN 2026

ARRIVAL ROUTE DESCRIPTION

From EMMAS on track 190° to cross DOKKE at 4000, then on track 181°. Expect RADAR vectors to final approach course.