

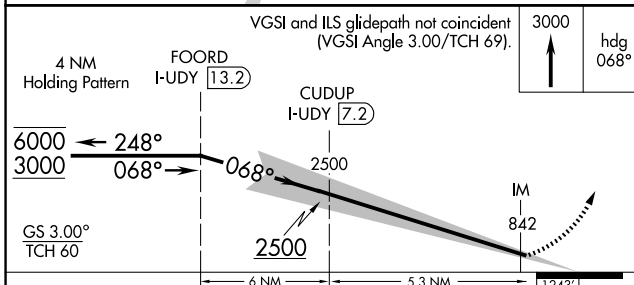
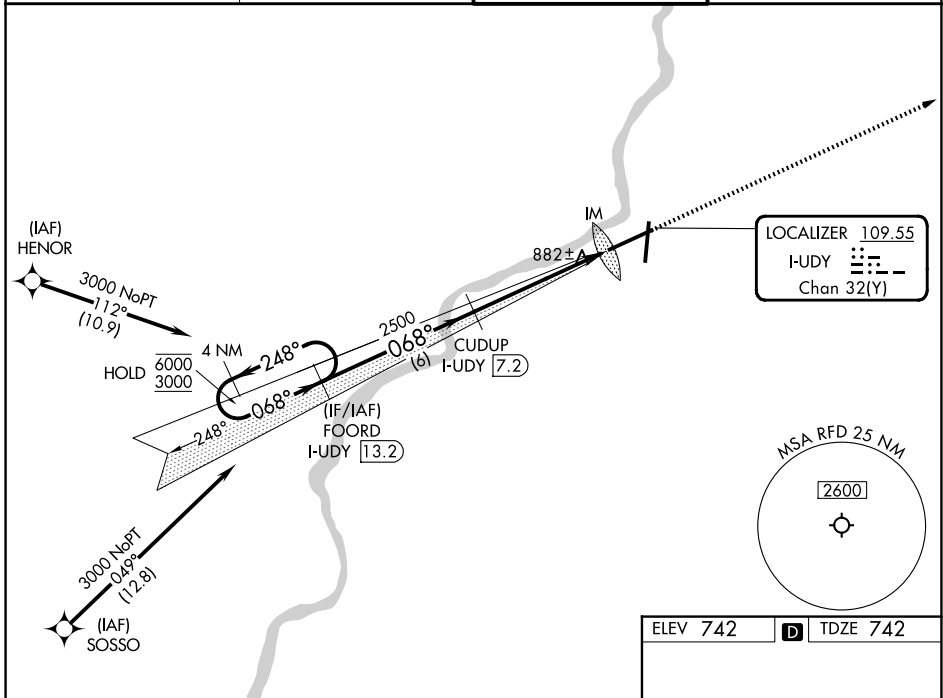
LOC/DME I-UDY <b>109.55</b> Chan <b>32 (Y)</b>	APP CRS <b>068°</b>	Rwy Ldg <b>10002</b> TDZE <b>742</b> Apt Elev <b>742</b>
--	------------------------	--

# ILS RWY 7 (CAT II & III)

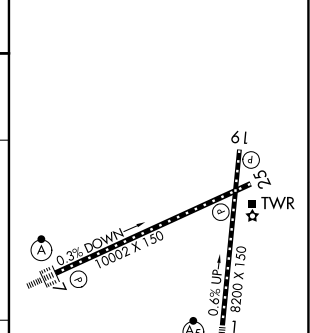
CHICAGO/ROCKFORD INTL (RFD)

RNP APCH - GPS. From HENOR or SOSSO. RADAR required.	ALSF-2 	MISSED APPROACH: Climb to 3000 on heading 068°. Expect RADAR vectors. (RADAR required).
ASR CAT II: RVR 1000 authorized with specific OPSPEC, MSPEC, or LOA approval and use of autoland or HUD to touchdown.		

ATIS <b>127.6</b>	ROCKFORD APP CON <b>121.0 327.0</b>	ROCKFORD TOWER <b>118.1 290.375</b>	GND CON <b>121.9 290.375</b>
----------------------	--	--	---------------------------------



ELEV 742		TDZE 742
----------	--	----------



CATEGORY	A	B	C	D
S-ILS 7	CAT II RA 114/12 100 DA 842			
S-ILS 7	CAT III RVR 06			

## CATEGORY II & III ILS - SPECIAL AIRCREW & AIRCRAFT CERTIFICATION REQUIRED

REIL Rws 19 and 25  
HIRL Rws 1-19 and 7-25  
TDZ/CL Rws 1 and 7

EC-3, 14 MAY 2026 to 11 JUN 2026

EC-3, 14 MAY 2026 to 11 JUN 2026