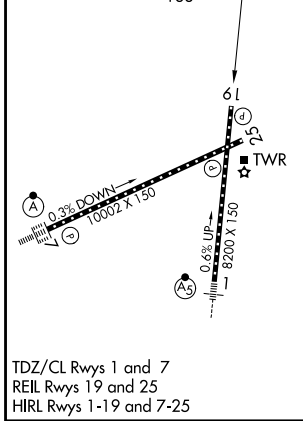
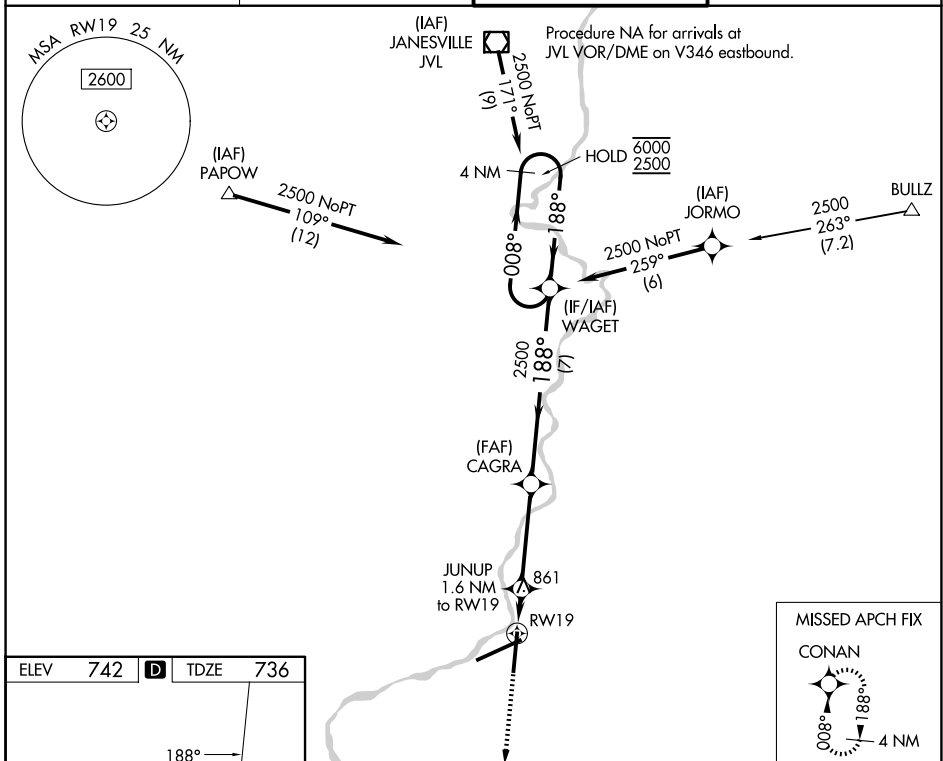


WAAS CH <b>40435</b> W19A	APP CRS <b>188°</b>	Rwy Ldg TDZE Apt Elev	<b>8099</b> <b>736</b> <b>742</b>
---------------------------------	------------------------	-----------------------------	---

# RNAV (GPS) RWY 19

CHICAGO/ROCKFORD INTL (R.F.D)

RNP APCH - GPS.		MISSED APPROACH: Climb to 2500 direct CONAN and hold.	
For uncompensated Baro-VNAV systems, LNAV/VNAV NA below -20°C or above 54°C.			
ATIS <b>127.6</b>	ROCKFORD APP CON <b>121.0 327.0</b>	ROCKFORD TOWER <b>118.1 290.375</b>	GND CON <b>121.9 290.375</b>



2500 CONAN		VGSI and RNAV glidepath not coincident (VGSI Angle 3.00/TCH 75).		4 NM Holding Pattern	
JUNUP 1.6 NM to RWY 19		CAGRA 2500		WAGET	
1 NM to RWY 19		1280		188°	
1 NM		0.6 NM		3.8 NM	
1 NM		0.6 NM		7 NM	
CATEGORY	A	B	C	D	
LPV DA	936-3/4		200 (200-3/4)		
LNAV/VNAV DA	1039-7/8 303 (300-7/8)				
LNAV MDA	1120-1	384 (400-1)	1120-1 1/8	384 (400-1 1/8)	
CIRCLING	1220-1 478 (500-1)	1280-1 538 (600-1)	1320-1 1/2 578 (600-1 1/2)	1460-2 1/4 718 (800-2 1/4)	

EC-3, 14 MAY 2026 to 11 JUN 2026

EC-3, 14 MAY 2026 to 11 JUN 2026