

LOC/DME I-DHY	APP CRS	Rwy Ldg	8003
110.1	247°	TDZE	41
Chan 38		Apt Elev	42

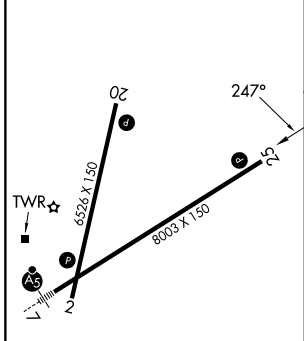
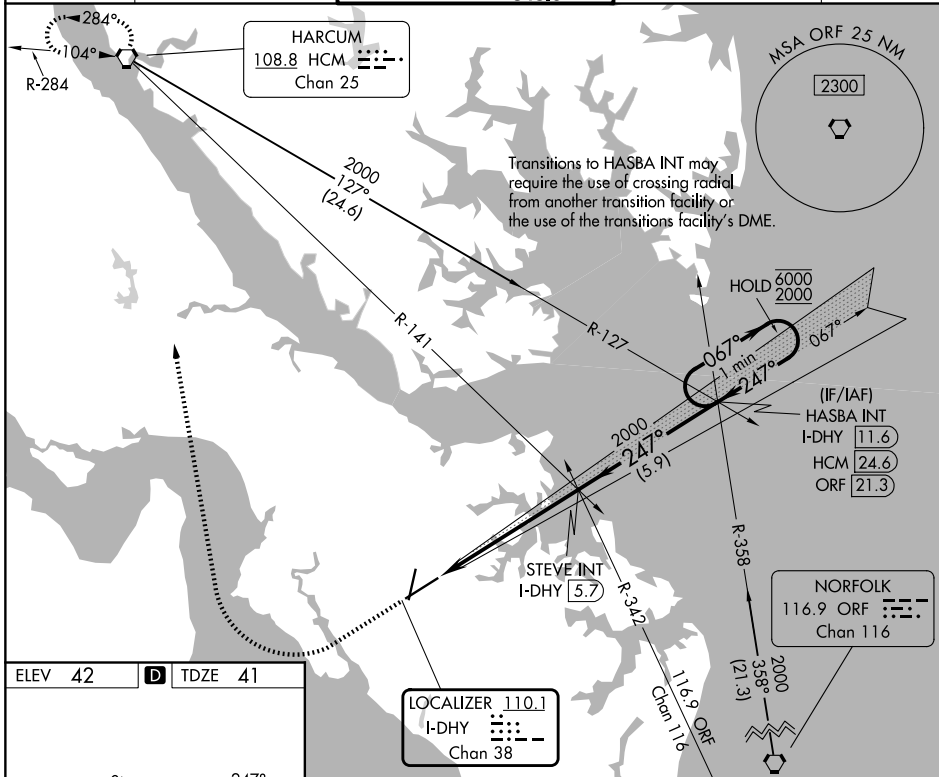
ILS or LOC RWY 25

NEWPORT NEWS/WILLIAMSBURG INTL (PHF)

⚠ VDP NA when using ORF altimeter setting. When local altimeter setting not received, use ORF altimeter setting and increase S-ILS 25 DA to 289 feet; increase all MDAs 60 feet and S-LOC 25 visibility Cat C/D 1/2 SM, and Circling visibility Cat C/D 1/2 SM.

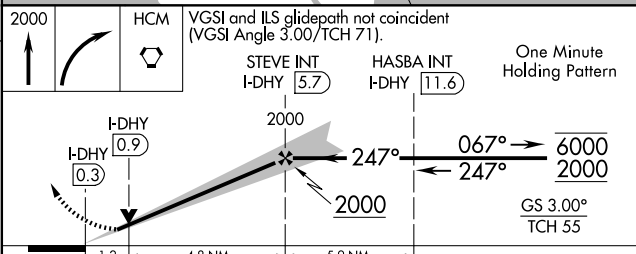
MISSED APPROACH: Climb to 2000 then right turn direct HCM VORTAC and hold.

ATIS	NORFOLK APP CON	NEWPORT NEWS TOWER*	GND CON	UNICOM
128.65	125.7 335.625	118.7 (CTAF) 0 348.6	121.9 348.6	122.95



REIL Rwy 20 and 25 **Ⓛ**
 HIRL Rwy 20 and 7-25 **Ⓛ**
 FAF to MAP 6 NM

Knots	60	90	120	150	180
Min:Sec	6:00	4:00	3:00	2:24	2:00



CATEGORY	A	B	C	D
S-ILS 25	241-3/4 200 (200-3/4)			
S-LOC 25	480-1	439 (500-1)	480-1 1/4	439 (500-1 1/4)
CIRCLING	520-1 478 (500-1)	540-1 498 (500-1)	760-2 718 (800-2)	780-2 1/4 738 (800-2 1/4)

NE-3, 14 MAY 2026 to 11 JUN 2026

NE-3, 14 MAY 2026 to 11 JUN 2026