

LOC/DME I-PHF <b>110.1</b> Chan 38	APP CRS <b>067°</b>	Rwy Ldg <b>8003</b> TDZE <b>40</b> Apt Elev <b>42</b>
--	------------------------	---

# ILS or LOC RWY 7

NEWPORT NEWS/WILLIAMSBURG INTL (PHF)

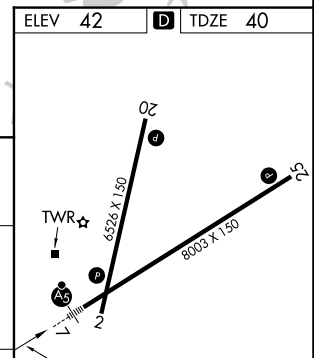
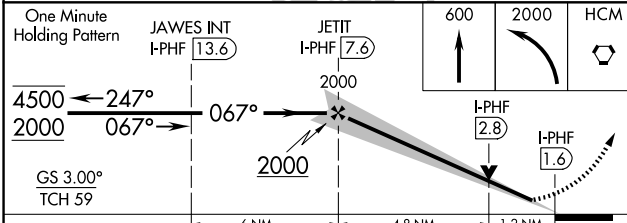
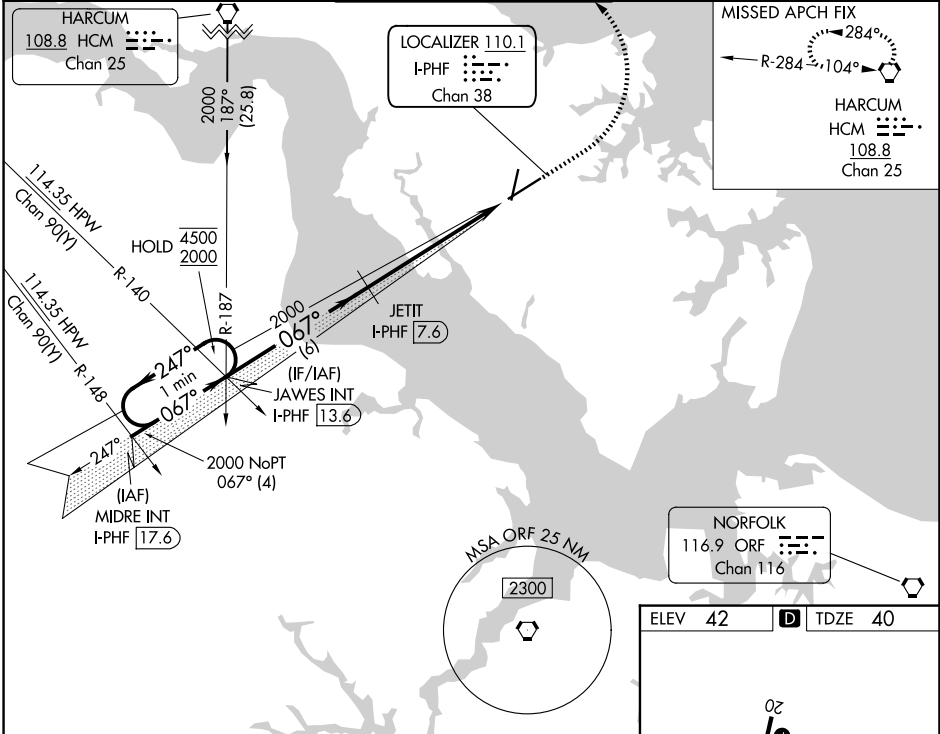
DME required.

**⚠** VDP NA when using ORF altimeter setting. When local altimeter setting not received, use ORF altimeter setting and increase S-ILS 07 DA to 288 feet; increase all MDAs 60 feet and S-LOC 07 visibility Cat C/D to RVR 5000 and Circling visibility Cat C/D ¼ SM. RADAR required for procedure entry at MIDRE.  
\* RVR 1800 authorized with use of FD or AP or HUD to DA.



**MISSED APPROACH:**  
Climb to 600 then climbing left turn to 2000 direct HCM VORTAC and hold.

ATIS <b>128.65</b>	NORFOLK APP CON <b>125.7 335.625</b>	NEWPORT NEWS TOWER* <b>118.7 (CTAF) 257.9 348.6</b>	GND CON <b>121.9 348.6</b>	UNICOM <b>122.95</b>
-----------------------	---	--	-------------------------------	-------------------------



CATEGORY	A	B	C	D
S-ILS 7*	240/24		200 (200-½)	
S-LOC 7	480/24	440 (500-½)	480/40	440 (500-¾)
CIRCLING	520-1 478 (500-1)	540-1 498 (500-1)	760-2 718 (800-2)	780-2¼ 738 (800-2¼)

REIL Rwy 20 and 25  
HIRL Rwy 2-20 and 7-25

NE-3, 14 MAY 2026 to 11 JUN 2026

NE-3, 14 MAY 2026 to 11 JUN 2026