

WAAS CH <b>61020</b> <b>W02A</b>	APP CRS <b>022°</b>	Rwy Ldg TDZE Apt Elev	<b>6526</b> <b>38</b> <b>42</b>
--	------------------------	-----------------------------	---------------------------------------

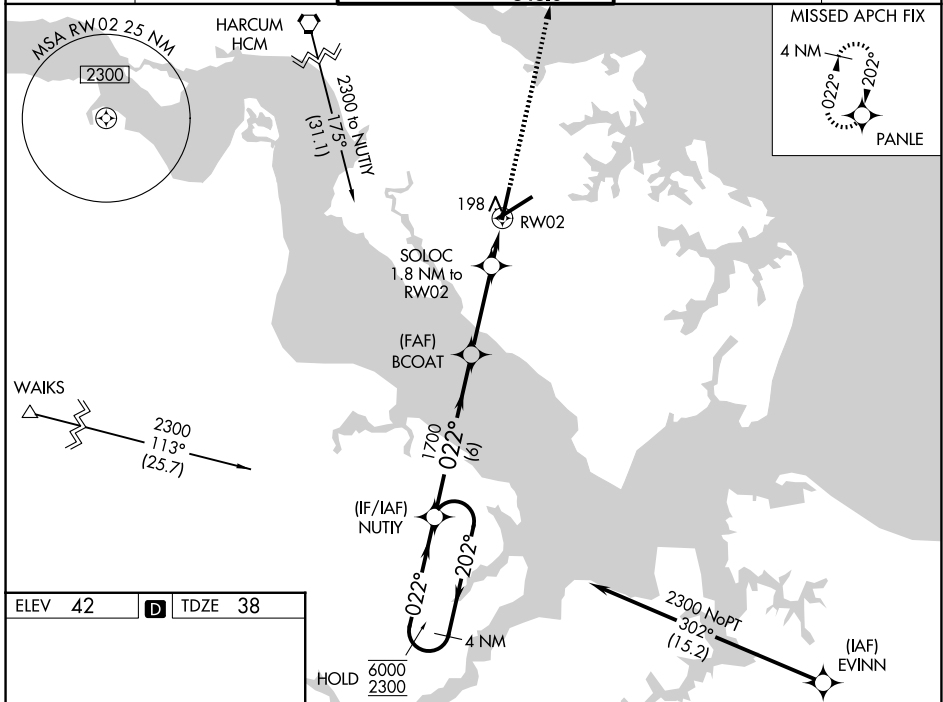
# RNAV (GPS) RWY 2

NEWPORT NEWS/WILLIAMSBURG INTL (PHF)

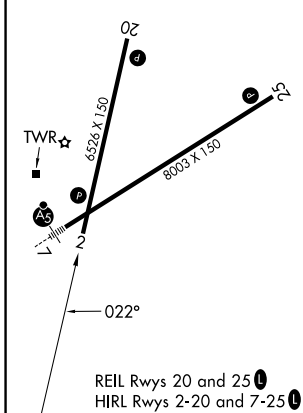
RNP APCH - GPS.		<p>⚠ For uncompensated Baro-VNAV systems, LNAV/VNAV NA below -7°C or above 54°C. Baro-VNAV and VDP NA when using ORF altimeter setting. When local altimeter setting not received, use ORF altimeter setting and increase LPV DA to 289 feet; increase LNAV/VNAV DA to 524 feet and all visibilities ½ SM. Increase all MDAs 60 feet and LNAV visibility Cat C/D ¼ SM, and Circling visibility Cat C/D ¼ SM.</p>	
-----------------	--	--	--

MISSED APPROACH: Climb to 2000 direct PANLE and hold.

ATIS <b>128.65</b>	NORFOLK APP CON <b>125.7 335.625</b>	NEWPORT NEWS TOWER* <b>118.7 (CTAF) 0 257.9 348.6</b>	GND CON <b>121.9 348.6</b>	UNICOM <b>122.95</b>
-----------------------	---	--	-------------------------------	-------------------------



ELEV 42	<b>D</b>	TDZE 38
---------	----------	---------



4 NM Holding Pattern	NUTTY	BCOAT	SOLOC	1700	660	2000	PANLE
6000	2300	1700	1700	660	2000	2000	2000
GP 3.00°	TCH 60	1700	1700	660	2000	2000	2000
		6 NM	3.3 NM	0.6	1.2 NM		

CATEGORY	A	B	C	D
LPV DA	241-1 203 (200-1)			
LNAV/DA	460-1¼ 422 (500-1¼)			
LNAV MDA	460-1	422 (500-1)	460-1¼	422 (500-1¼)
CIRCLING	520-1 478 (500-1)	540-1 498 (500-1)	760-2 718 (800-2)	780-2¼ 738 (800-2¼)

NE-3, 14 MAY 2026 to 11 JUN 2026

NE-3, 14 MAY 2026 to 11 JUN 2026