

WAAS CH 70345 W15A	APP CRS 148°	Rwy Ldg TDZE Apt Elev	5498 1048 1051
--	------------------------	-----------------------------	---

RNAV (GPS) RWY 15

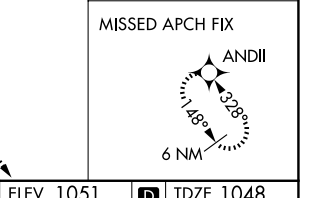
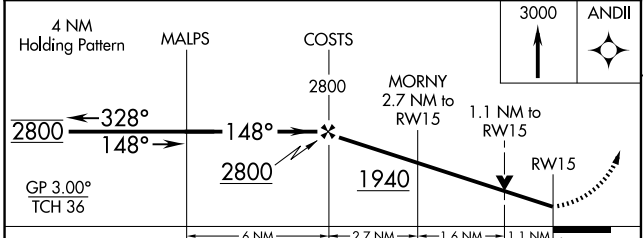
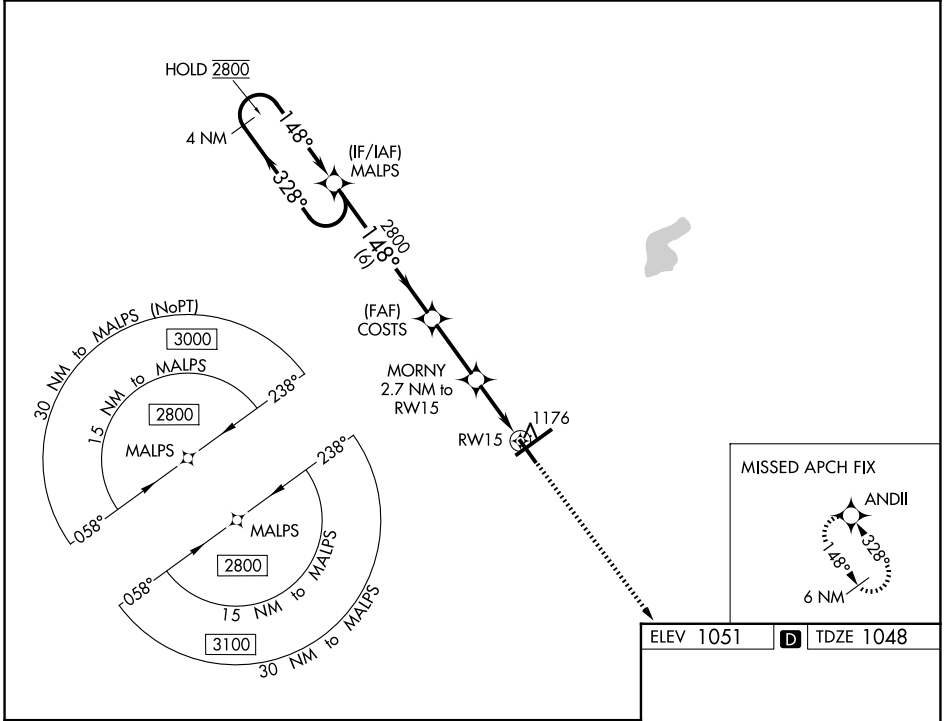
SPRINGFIELD/BECKLEY MUNI (SGH)

RNP APCH - GPS.

▼ Rwy 15 helicopter visibility reduction below 3/4 SM NA.
▲ For uncompensated Baro-VNAV systems, LNAV/VNAV NA below -17°C or above 54°C.

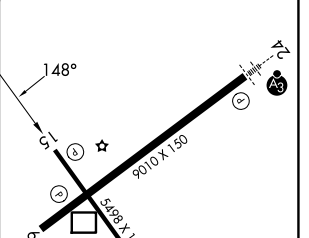
MISSED APPROACH: Climb to 3000 direct ANDII and hold.

AWOS-3PT 134.975	COLUMBUS APP CON 118.85 269.275	UNICOM 122.95 (CTAF) ①
----------------------------	---	----------------------------------



ELEV 1051	TDZE 1048
-----------	-----------

CATEGORY	A	B	C	D
LPV DA		1298-3/4	250 (300-3/4)	
LNAV/VNAV DA		1337-7/8	289 (300-7/8)	
LNAV MDA	1440-1	392 (400-1)	1440-1 1/8	392 (400-1 1/8)
CIRCLING	1480-1 429 (500-1)	1580-1 529 (600-1)	1580-1 1/2 529 (600-1 1/2)	1620-2 569 (600-2)



HIRL Rwy 6-24 ①
MIRL Rwy 15-33 ①
REIL Rws 6, 15 and 33 ①

EC-2, 14 MAY 2026 to 11 JUN 2026

EC-2, 14 MAY 2026 to 11 JUN 2026