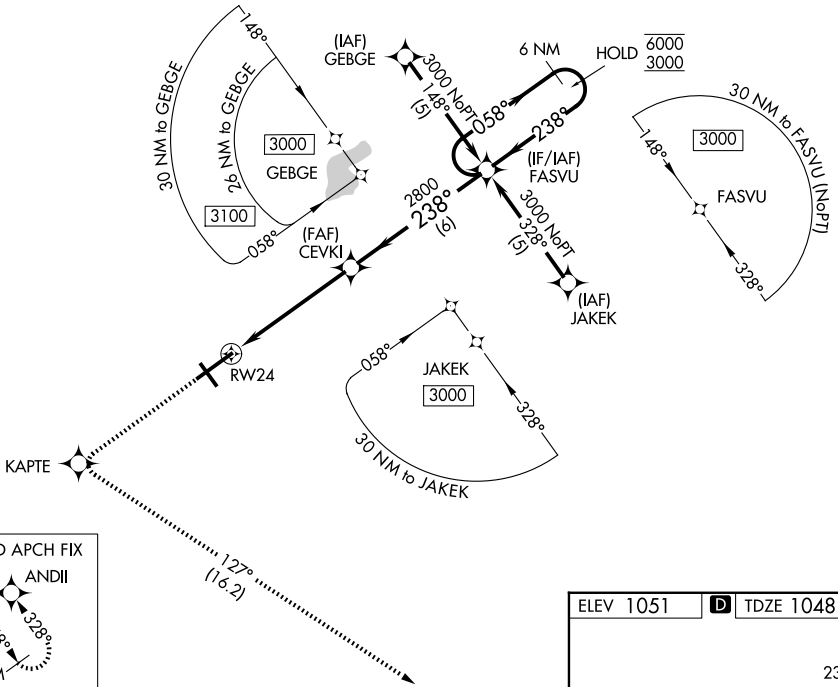


WAAS CH <b>97615</b> <b>W24A</b>	APP CRS <b>238°</b>	Rwy Ldg TDZE Apt Elev	<b>9009</b> <b>1048</b> <b>1051</b>
--	------------------------	-----------------------------	---

# RNAV (GPS) RWY 24

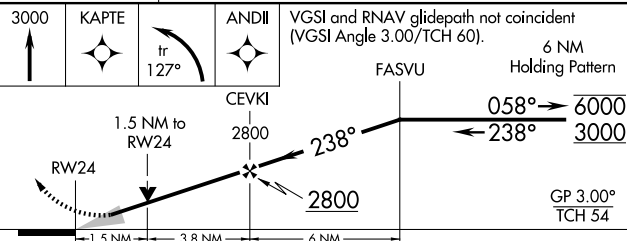
SPRINGFIELD/BECKLEY MUNI (SGH)

RNP APCH - GPS.		SSALR	MISSED APPROACH: Climb to 3000 direct KAPTE and left turn on track 127° to ANDII and hold.
<p><b>▽</b> For uncompensated Baro-VNAV systems, LNAV/VNAV NA below -17°C or above 54°C.  <b>▲</b> For inop ALS, increase LNAV/VNAV all Cats visibility to 1 SM.</p>			
AWOS-3PT <b>134.975</b>	COLUMBUS APP CON <b>118.85 269.275</b>	UNICOM <b>122.95 (CTAF) ①</b>	



EC-2, 14 MAY 2026 to 11 JUN 2026

EC-2, 14 MAY 2026 to 11 JUN 2026



ELEV 1051	<b>D</b> TDZE 1048
-----------	--------------------

HRL Rwy 6-24 ①  
MRL Rwy 15-33 ①  
REIL Rws 6, 15 and 33 ①

CATEGORY	A	B	C	D
LPV DA		1248-½	200 (200-½)	
LNAV/VNAV DA		1398-⅝	350 (400-⅝)	
LNAV MDA	1580-½	532 (600-½)	1580-1	532 (600-1)
CIRCLING	1580-1	529 (600-1)	1580-1½ 529 (600-1½)	1620-2 569 (600-2)