

|  |                        |                             |   |
|--|------------------------|-----------------------------|---|
| WAAS<br>CH <b>58115</b><br><b>W06A</b> | APP CRS<br><b>058°</b> | Rwy Ldg<br>TDZE<br>Apt Elev | <b>9009</b><br><b>1051</b><br><b>1051</b> |
|--|------------------------|-----------------------------|---|

# RNAV (GPS) RWY 6

SPRINGFIELD/BECKLEY MUNI (SGH)

RNP APCH - GPS

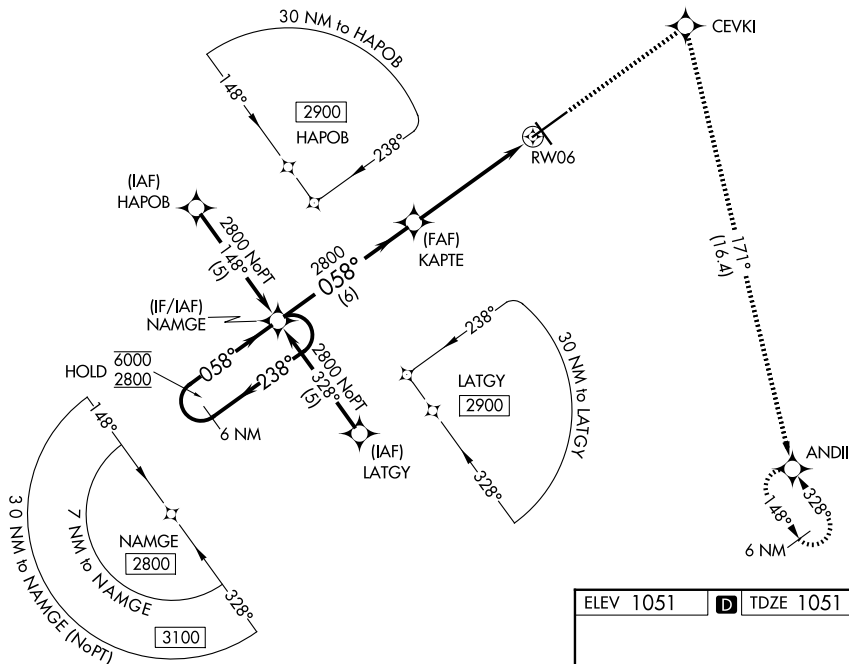
**⚠** Rwy 6 helicopter visibility reduction below ¾ SM NA.  
For uncompensated Baro-VNAV systems, LNAV/VNAV NA below -17°C or above 54°C

MISSED APPROACH: Climb to 3000  
direct CEVKI and right turn on track 171°  
to ANDII and hold.

AWOS-3PT  
**134.975**

COLUMBUS APP CON  
**118.85 269.275**

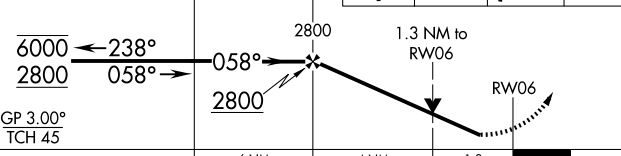
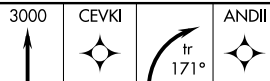
UNICOM  
**122.95 (CTAF) ①**



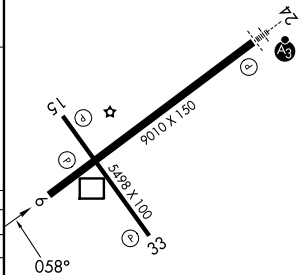
ELEV 1051 **D** TDZE 1051

6 NM Holding Pattern

NAMGE



| CATEGORY     | A                     | B                     | C                             | D                     |
|--------------|-----------------------|-----------------------|-------------------------------|-----------------------|
| LPV DA       |                       | 1354-7/8              | 303 (400-7/8)                 |                       |
| LNAV/VNAV DA |                       | 1429-1                | 378 (400-1)                   |                       |
| LNAV MDA     | 1500-1                | 449 (500-1)           | 1500-1 3/8                    | 449 (500-1 3/8)       |
| CIRCLING     | 1500-1<br>449 (500-1) | 1580-1<br>529 (600-1) | 1580-1 1/2<br>529 (600-1 1/2) | 1620-2<br>569 (600-2) |



HIRL Rwy 6-24 ①  
MIRL Rwy 15-33 ①  
REIL Rws 6, 15 and 33 ①

EC-2, 14 MAY 2026 to 11 JUN 2026

EC-2, 14 MAY 2026 to 11 JUN 2026