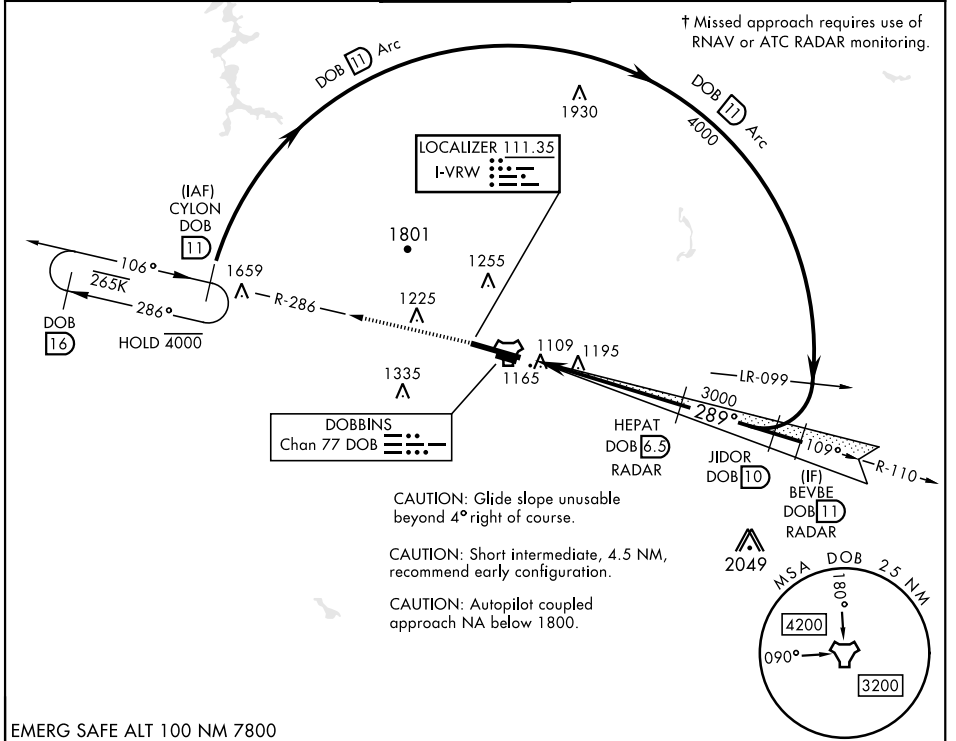


ILS or LOC RWY 29

LOC I-VRW 111.35	APCH CRS 289°	Rwy Ldg 10,002 TDZE 1014 Arprt Elev 1069	[USAF]	DOBBINS ARB (KMGE)
----------------------------	-------------------------	--	--------	--------------------

TACAN or RADAR required.	SALSF A2	† MISSED APPROACH: Climb to 3000 on DOB TACAN R-286 to CYLON and hold.
--------------------------	-------------	--

ATIS ★ 269.5	ATLANTA APP CON 121.0 268.7	TOWER ★ 120.75 370.875	GND CON 125.3 275.8	ASR
------------------------	---------------------------------------	----------------------------------	-------------------------------	-----



EMERG SAFE ALT 100 NM 7800

3000 ↑ DOB R-286	CYLON DOB 11	HEPAT DOB 6.5 RADAR	JIDOR R-110 DOB 10	BEVBE R-110 DOB 11 RADAR	CYLON R-286 DOB 11	ELEV 1069	TDZE 1014
TACAN	HIDIT DOB 0.9	2933	4000	4000	4000		
CATEGORY	A	B	C	D	E	HIRL Rwy 11-29 REIL Rwy 11 and 29	
S-ILS 29	1214/40		200	(200-¾)		FAF to MAP 5.5 NM	
S-LOC 29*	1520/40	506 (500-¾)	1520-1¼	506	(500-1¼)	Knots: 60 90 120 150 180 Min:Sec: 5:30 3:40 2:45 2:12 1:50	
** CIRCLING	1580-1 511 (600-1)	1620-1 551 (600-1)	1760-2 691 (700-2)	1760-2¼ 691 (700-2¼)	1760-2½ 691 (700-2½)		

ILS or LOC RWY 29

SE-4, 14 MAY 2026 to 11 JUN 2026

SE-4, 14 MAY 2026 to 11 JUN 2026