

TACAN RWY 29

TACAN Chan 77	APCH CRS 291°	Rwy Idg 10,002 TDZE 1014 Arpt Elev 1069
----------------------	----------------------	--

[USAF]

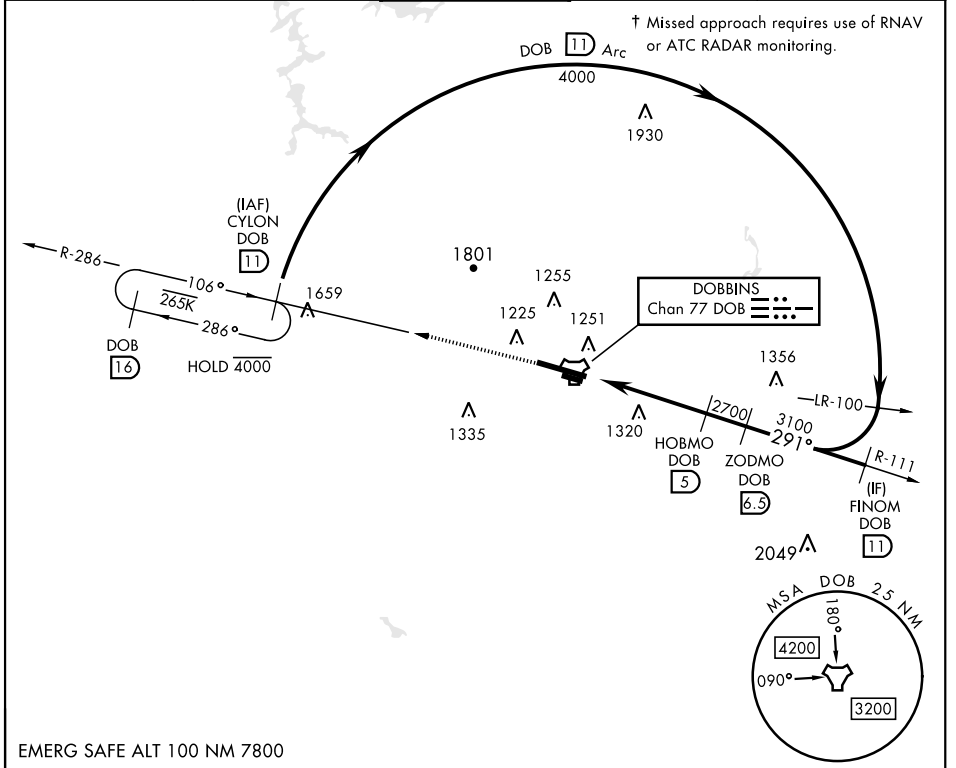
DOBBINS ARB (KMGE)

▼ * When ALS inop, increase CAT AB RVR to 55 and vis to 1 mile, CAT CDE vis to 2 miles.
 ** Circling not authorized N of Rwy 11-29 for CAT DE aircraft. Circling to assault strip not authorized.

SALSF (A2)

† MISSED APPROACH: Climb to 3000 on DOB TACAN R-286 to CYLON and hold.

ATIS ★ 269.5	ATLANTA APP CON 121.0 268.7	TOWER ★ 120.75 370.875	GND CON 125.3 275.8	ASR
------------------------	---------------------------------------	----------------------------------	-------------------------------	-----

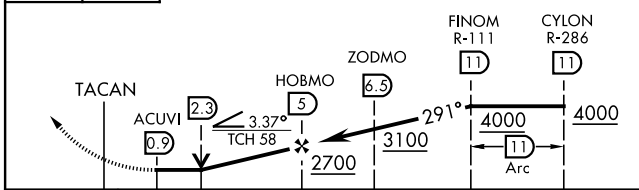


SE-4, 14 MAY 2026 to 11 JUN 2026

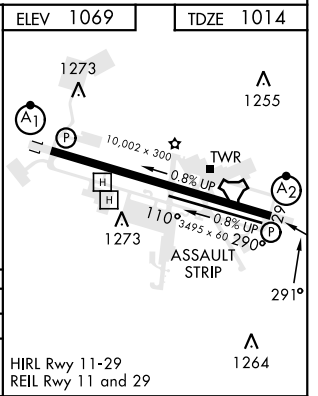
SE-4, 14 MAY 2026 to 11 JUN 2026

EMERG SAFE ALT 100 NM 7800

3000 DOB R-286
 CYLON DOB (11)
 VGSI and descent angles not coincident. (VGSI Angle 3.00)



CATEGORY	A	B	C	D	E
S-29 *	1720/40 706 (700-¾)		1720-1¼ 706 (700-1¾)		
CIRCLING **	1720-1 651 (700-1)		1760-2 691 (700-2)	1760-2¼ 691 (700-2¼)	1760-2½ 691 (700-2½)



TACAN RWY 29