

APP CRS	Rwy Idg	<b>4004</b>
<b>276°</b>	TDZE	<b>392</b>
	Apt Elev	<b>393</b>

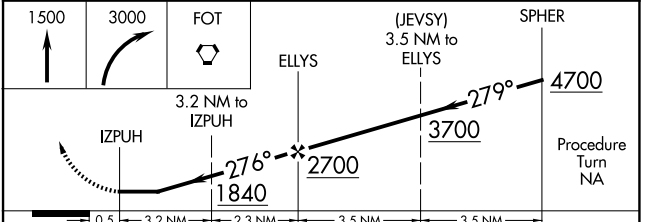
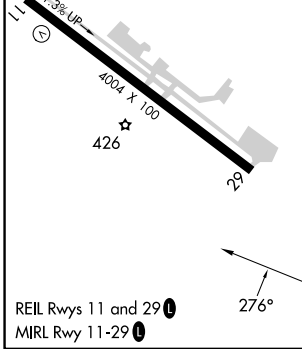
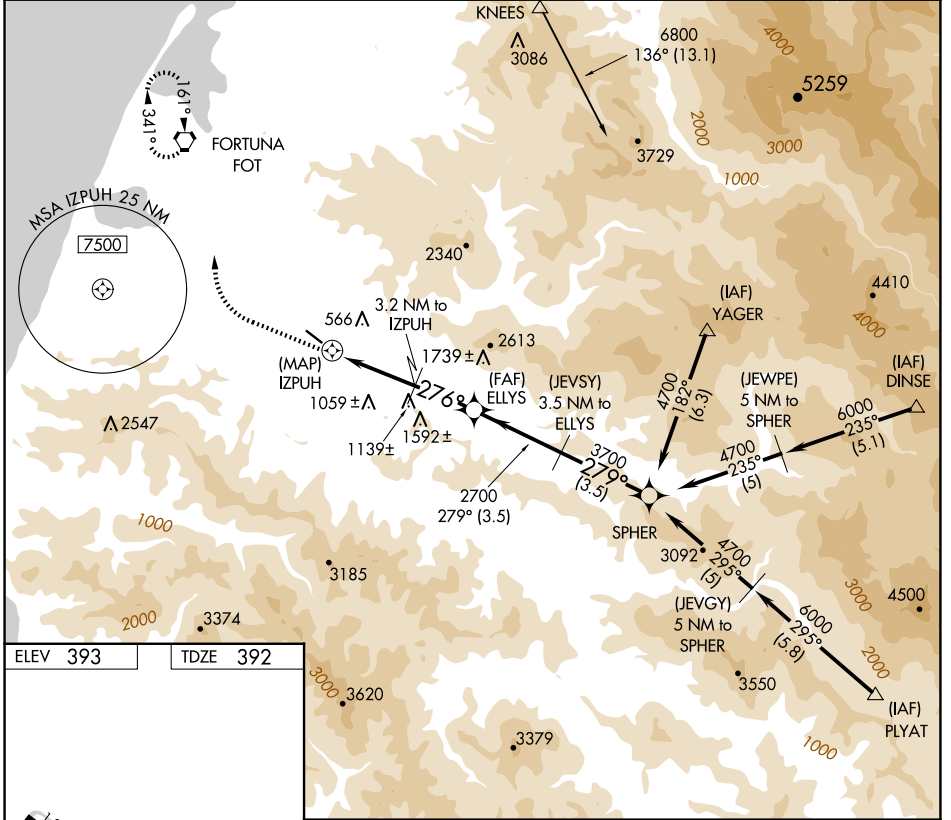
# GPS RWY 29

ROHNERVILLE (FOT)

**NA** When local altimeter setting not received, use Arcata altimeter setting. Circling NA for Cat D north of Rwy 11-29.

**MISSED APPROACH:** Climb to 1500 then climbing right turn to 3000 direct FOT VORTAC and hold.

AWOS-3 <b>133.8</b>	SEATTLE CENTER <b>124.85 306.3</b>	CTAF <b>122.9</b>
------------------------	---------------------------------------	----------------------



CATEGORY	A	B	C	D
S-29	1160-1 768 (800-1)	1160-1½ 768 (800-1¼)	1160-2¼ 768 (800-2¼)	1160-2½ 768 (800-2½)
CIRCLING	1160-1 767 (800-1)	1360-1½ 967 (1000-1½)	1720-3 1327 (1400-3)	1780-3 1387 (1400-3)

SW-2, 14 MAY 2026 to 11 JUN 2026

SW-2, 14 MAY 2026 to 11 JUN 2026