

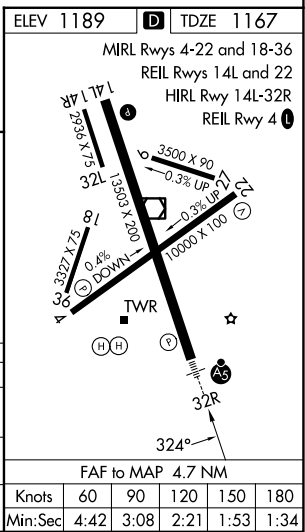
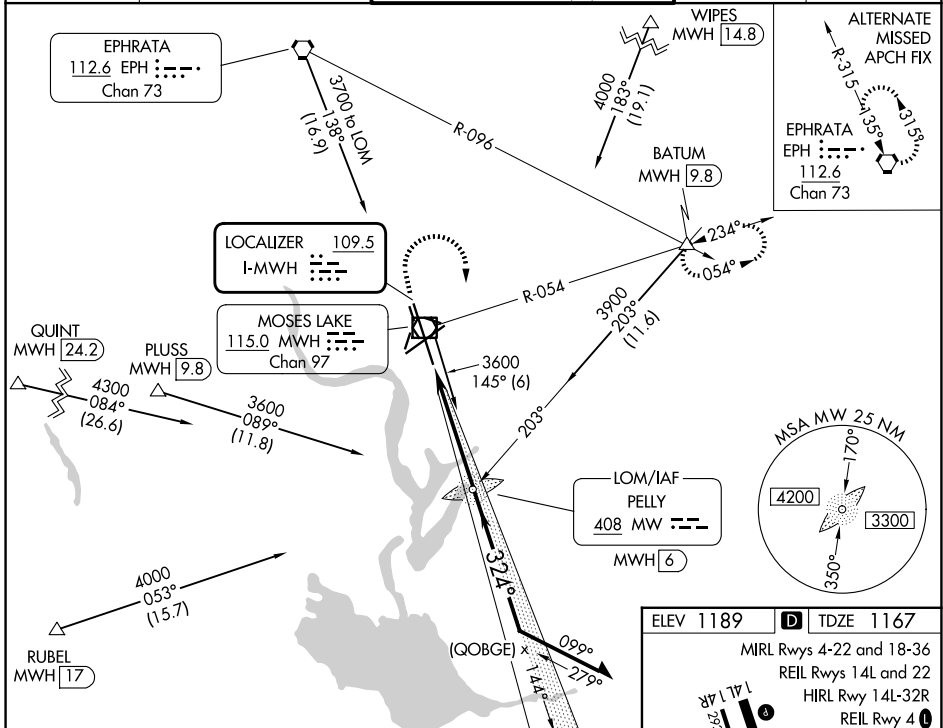
LOC I-MWH <b>109.5</b>	APP CRS <b>324°</b>	Rwy Ldg <b>13492</b> TDZE <b>1167</b> Apt Elev <b>1189</b>
---------------------------	------------------------	--

# ILS or LOC RWY 32R

GRANT COUNTY INTL (MWH)

ADF or DME required.	MALSR AS	MISSED APPROACH: Climb to 1800 then climbing right turn to 4000 on MWH R-054 to BATUM INT/MWH VOR/DME 9.8 DME and hold, continue climb-in-hold to 4000.
<p>⚠ Circling Rwy 9, 27, 18, 36 NA at night. VDP NA when using EPH altimeter setting. When local altimeter setting not received, use EPH altimeter setting and increase S-ILS DA to 1403 feet; increase all MDAs 40 feet and S-LOC visibility Cats C/D 1/8 SM, and Circling Cat D visibility 1/4 SM.</p>		

ATIS <b>119.05</b>	GRANT COUNTY APP CON * <b>126.4 379.95</b>	GRANT COUNTY TOWER * <b>118.25 (CTAF) 257.8 (E)</b> <b>128.0 257.8 (W)</b>	GND CON <b>121.9</b>	UNICOM <b>122.95</b>
-----------------------	---	--	-------------------------	-------------------------



1800	4000	BATUM	MW LOM Pelly MWH 6	VGSI and ILS glidepath not coincident (VGSI Angle 3.00/TCH 76). Remain within 10 NM
↑	MWH R-054	△		
			2727	144°
			2800	324°
				3300
				GS 3.00° TCH 55
CATEGORY	A	B	C	D
S-ILS 32R		1367-1/2	200 (200-1/2)	
S-LOC 32R	1620-1/2	453 (500-1/2)	1620-7/8	453 (500-7/8)
CIRCLING	1680-1	491 (500-1)	1720-1 1/2 531 (600-1 1/2)	1840-2 651 (700-2)

NW-1, 14 MAY 2026 to 11 JUN 2026

NW-1, 14 MAY 2026 to 11 JUN 2026