

LOM MW <b>408</b>	APP CRS <b>324°</b>	Rwy Ldg 13492
		TDZE 1167
		Apt Elev 1189

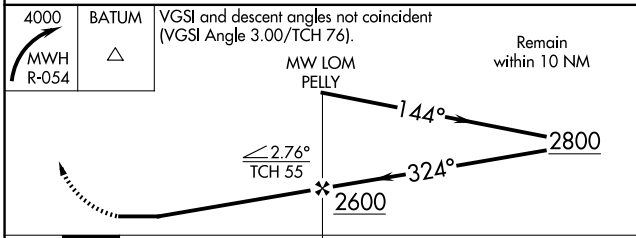
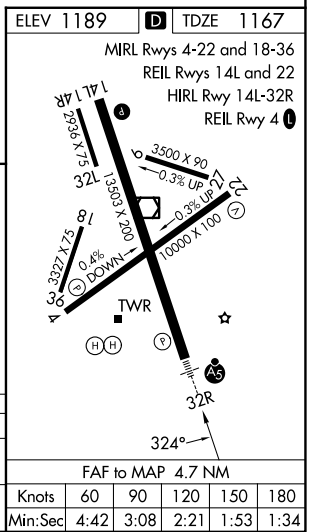
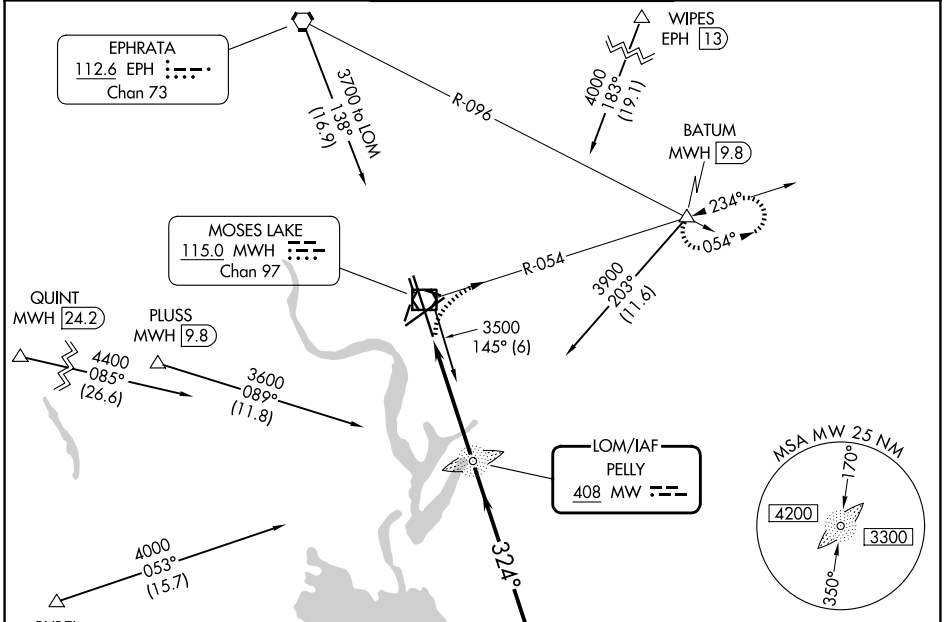
# NDB RWY 32R

GRANT COUNTY INTL (MWH)

**⚠** Circling Rwy 9, 27, 18, 36 NA at night. For inop ALS, increase S-32R Cats C and D visibility to 1 1/2 SM. When local altimeter setting not received, use EPH altimeter setting and increase all MDAs 40 feet and S-32R visibility Cat C/D 1/2 SM, and Circling visibility Cat C/D 1/2 SM.

**MALSR** MISSED APPROACH: Climbing right turn to 4000 on MWH VOR/DME R-054 to BATUM INT/9.8 DME and hold, continue climb-in-hold to 4000.

ATIS <b>119.05</b>	GRANT COUNTY APP CON ★ <b>126.4 379.95</b>	GRANT COUNTY TOWER ★ <b>118.25 (CTAF) 257.8 (E)</b> <b>128.0 257.8 (W)</b>	GND CON <b>121.9</b>	UNICOM <b>122.95</b>
-----------------------	---	--	-------------------------	-------------------------



CATEGORY	A	B	C	D
S-32R	1680-1		513 (500-1)	
CIRCLING	1680-1 491 (500-1)		1720-1 1/2 531 (600-1 1/2)	1840-2 651 (700-2)

NW-1, 14 MAY 2026 to 11 JUN 2026

NW-1, 14 MAY 2026 to 11 JUN 2026