

APP CRS 216°	Rwy Ldg TDZE 1166 Apt Elev 1189
------------------------	---

RNAV (RNP) Z RWY 22

GRANT COUNTY INTL (MWH)

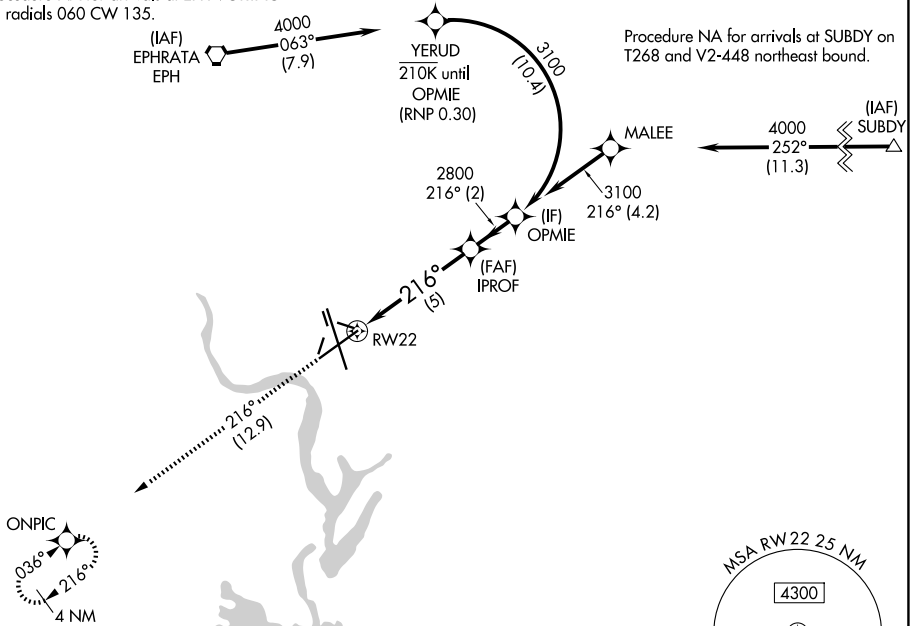
RNP AR APCH-GPS.
 For uncompensated Baro-VNAV systems, procedure NA below
 -1.5°C or above 54°C.

MISSED APPROACH: Climb to 4000 on track 216° to ONPIC and hold.

ATIS 119.05	GRANT COUNTY APP CON * 126.4 379.95	GRANT COUNTY TOWER * 118.25 (CTAF) 0 257.8 (E) 128.0 257.8 (W)	GND CON 121.9	UNICOM 122.95
-----------------------	---	--	-------------------------	-------------------------

Procedure NA for arrivals at EPH VORTAC on radials 060 CW 135.

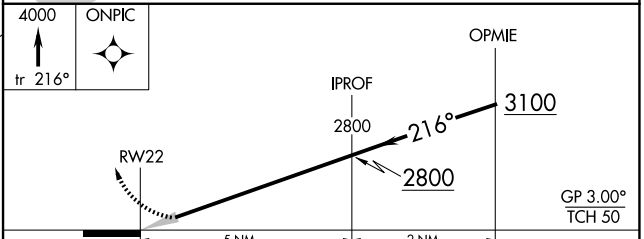
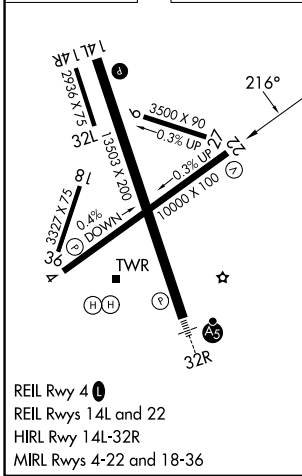
Procedure NA for arrivals at SUBDY on T268 and V2-448 northeast bound.



NW-1, 14 MAY 2026 to 11 JUN 2026

NW-1, 14 MAY 2026 to 11 JUN 2026

ELEV 1189	D	TDZE 1166
-----------	----------	-----------



CATEGORY	A	B	C	D
RNP 0.10 DA		1421- ³ / ₄	255 (300- ³ / ₄)	
RNP 0.30 DA		1508-1	342 (400-1)	

AUTHORIZATION REQUIRED