

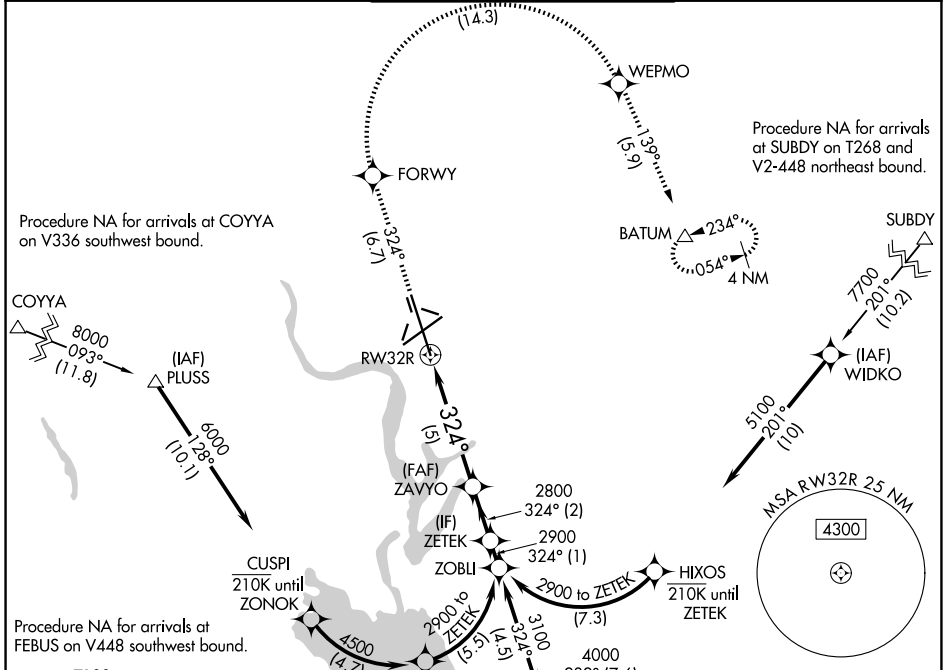
APP CRS	Rwy Ldg	<b>13492</b>
<b>324°</b>	TDZE	<b>1167</b>
	Apt Elev	<b>1189</b>

# RNAV (RNP) Z RWY 32R

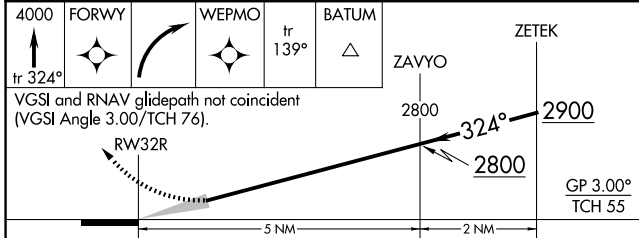
GRANT COUNTY INTL (MWH)

RNP AR APCH-GPS.	MALSR	MISSED APPROACH: Climb to 4000 on track 324° to FORWY right turn to WEPMO and track 139° to BATUM and hold.
<p>▼ For uncompensated Baro-VNAV systems, procedure NA below -15°C or above 54°C. For inoperative ALS increase RNP 0.10 visibility all Cats to RVR 4000, increase RNP 0.30 visibility all Cats to RVR 6000.</p>		

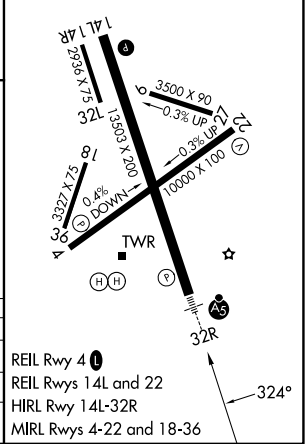
ATIS <b>119.05</b>	GRANT COUNTY APP CON * <b>126.4 379.95</b>	GRANT COUNTY TOWER * <b>118.25 (CTAF) 0 257.8 (E)</b> <b>128.0 257.8 (W)</b>	GND CON <b>121.9</b>	UNICOM <b>122.95</b>
-----------------------	---	--	-------------------------	-------------------------



4000	FORWY	WEPMO	BATUM	ZAVYO	ZETEK
tr 324°			tr 139°		



ELEV 1189	<b>D</b>	TDZE 1167
-----------	----------	-----------



CATEGORY	A	B	C	D
RNP 0.10 DA		1417/24	250 (300-½)	
RNP 0.30 DA		1564/35	397 (400-⅘)	

## AUTHORIZATION REQUIRED

NW-1, 14 MAY 2026 to 11 JUN 2026

NW-1, 14 MAY 2026 to 11 JUN 2026