

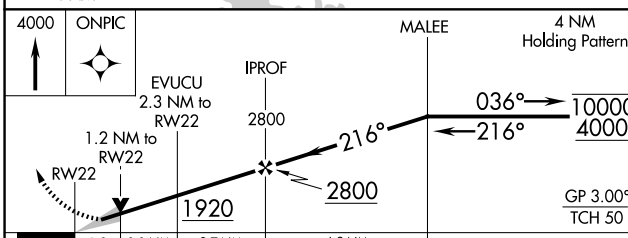
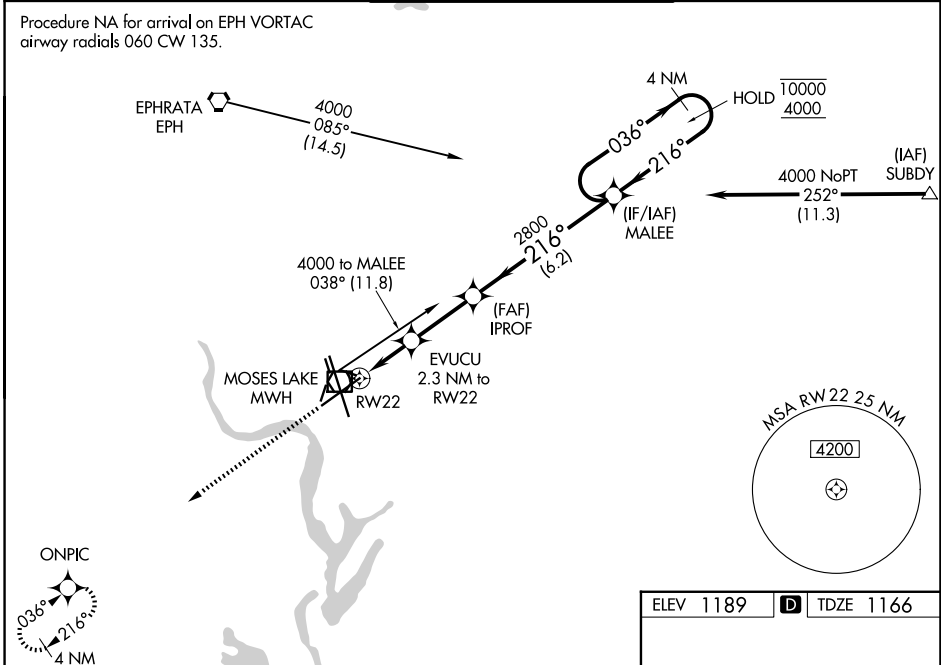
WAAS CH <b>70410</b> <b>W22A</b>	APP CRS <b>216°</b>	Rwy Ldg <b>10000</b> TDZE <b>1166</b> Apt Elev <b>1189</b>
--	------------------------	--

# RNAV (GPS) Y RWY 22

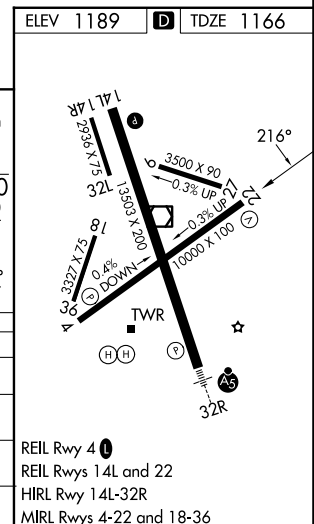
GRANT COUNTY INTL (MWH)

RNP APCH - GPS.	<p><b>⚠</b> For uncompensated Baro-VNAV systems, LNAV/VNAV NA below -17°C or above 54°C. Baro-VNAV and VDP NA when using EPH altimeter setting. Circling Rwy 9, 27, 18, 36 NA at night. When local altimeter setting not received, use EPH altimeter setting and increase LPV DA to 1402 feet; increase LNAV/VNAV DA to 1465 feet; increase all MDAs 40 feet and LNAV visibility Cats C and D ¼ SM and Circling visibility Cat D ¼ SM.</p>	MISSED APPROACH: Climb to 4000 direct ONPIC and hold, continue climb-in-hold to 4000.
-----------------	--	---

ATIS <b>119.05</b>	GRANT COUNTY APP CON * <b>126.4 379.95</b>	GRANT COUNTY TOWER * <b>118.25 (CTAF) 0 257.8 (E)</b> <b>128.0 257.8 (W)</b>	GND CON <b>121.9</b>	UNICOM <b>122.95</b>
-----------------------	---	--	-------------------------	-------------------------



CATEGORY	A	B	C	D
LPV DA		1366-¾	200 (200-¾)	
LNAV/VNAV DA		1429-⅞	263 (300-⅞)	
LNAV MDA	1580-1	414 (400-1)	1580-1½	414 (400-1½)
CIRCLING	1660-1	471 (500-1)	1720-1½	1840-2
			531 (600-1½)	651 (700-2)



NW-1, 14 MAY 2026 to 11 JUN 2026

NW-1, 14 MAY 2026 to 11 JUN 2026