

| | | |
|--|------------------------|--|
| WAAS CH 42809 W04A | APP CRS 036° | Rwy Ldg 10000 TDZE 1189 Apt Elev 1189 |
|--|------------------------|--|

RNAV (GPS) Y RWY 4

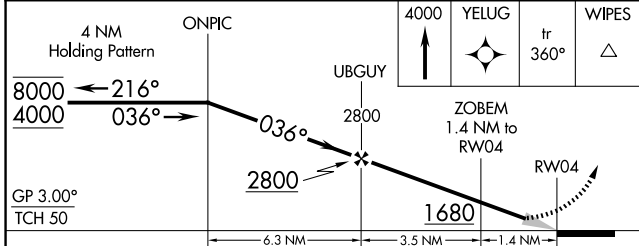
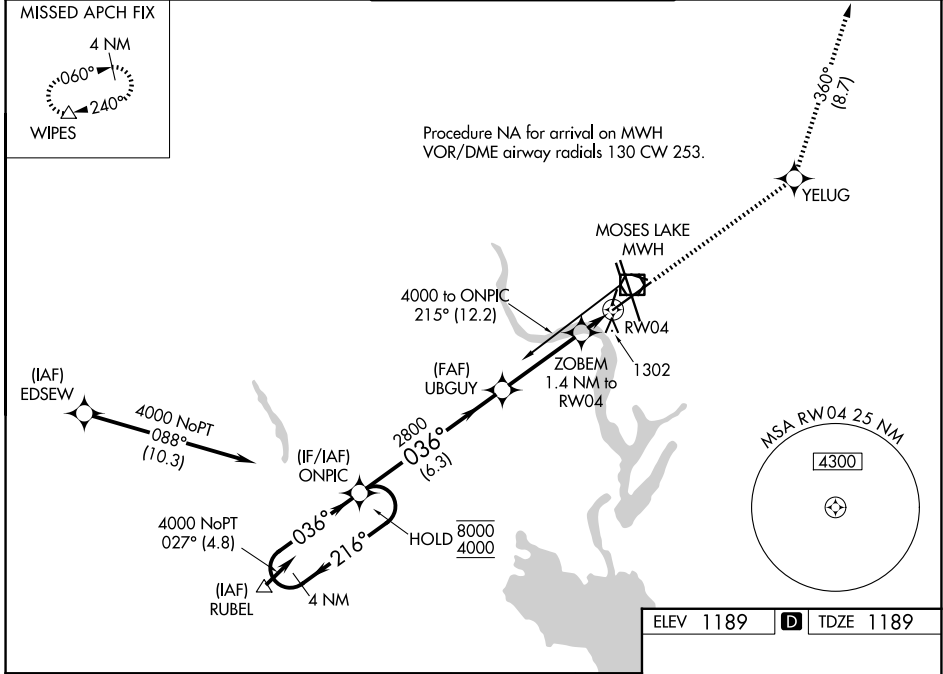
GRANT COUNTY INTL (MWH)

RNP APCH-GPS.

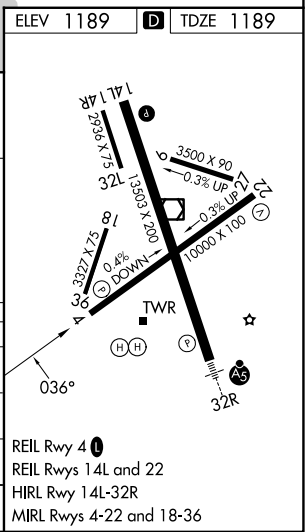
⚠ For uncompensated Baro-VNAV systems, LNAV/VNAV NA below -15°C or above 54°C. Circling Rwy 9, 27, 18, 36 NA at night. Baro-VNAV NA when using EPH altimeter setting. When local altimeter setting not received, use EPH altimeter setting and increase LPV DA to 1425 feet; increase LNAV/VNAV DA to 1549 feet; increase all MDAs 40 feet and LNAV Cats C and D visibility 1/2 SM and Circling Cat D 1/4 SM.

MISSED APPROACH: Climb to 4000 direct YELUG and on track 360° to WIPES and hold.

| | | | | |
|-----------------------|---|--|-------------------------|-------------------------|
| ATIS 119.05 | GRANT COUNTY APP CON * 126.4 379.95 | GRANT COUNTY TOWER * 118.25 (CTAF) 0 257.8 (E) 128.0 257.8 (W) | GND CON 121.9 | UNICOM 122.95 |
|-----------------------|---|--|-------------------------|-------------------------|



| CATEGORY | A | B | C | D |
|--------------|--------|-------------|-----------------|-----------------|
| LPV DA | | 1389-3/4 | 200 (200-3/4) | |
| LNAV/VNAV DA | | 1513-1 | 324 (400-1) | |
| LNAV MDA | 1620-1 | 431 (500-1) | 1620-1 1/4 | 431 (500-1 1/4) |
| CIRCLING | 1660-1 | 471 (500-1) | 1720-1 1/2 | 1840-2 |
| | | | 531 (600-1 1/2) | 651 (700-2) |



NW-1, 14 MAY 2026 to 11 JUN 2026

NW-1, 14 MAY 2026 to 11 JUN 2026