

VOR/DME MWH <b>115.0</b> Chan <b>97</b>	APP CRS <b>231°</b>	Rwy Ldg <b>10000</b> TDZE <b>1166</b> Apt Elev <b>1189</b>
---	------------------------	--

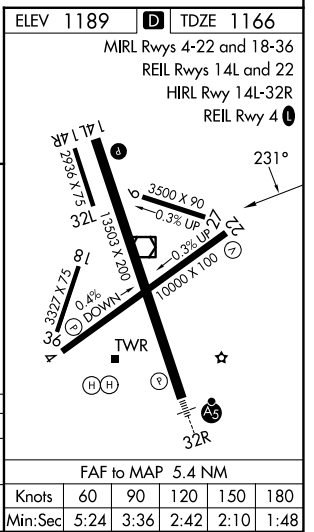
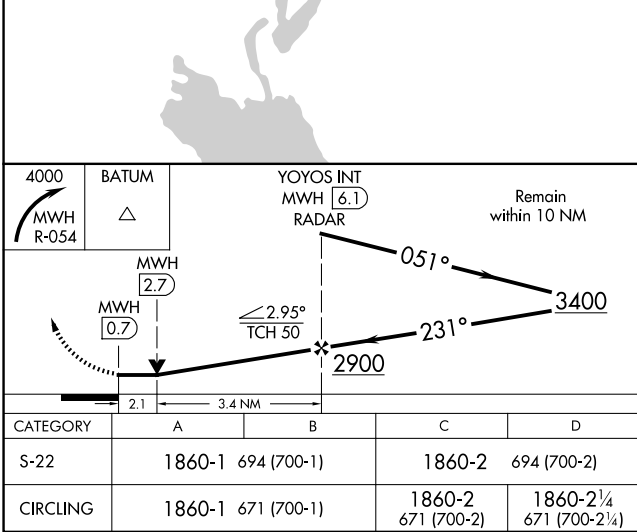
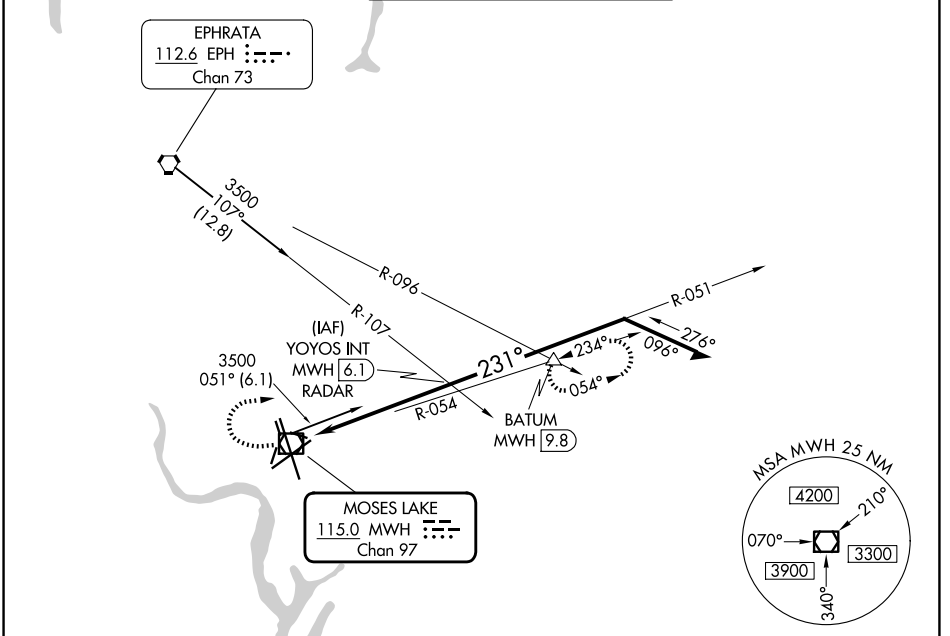
# VOR RWY 22

GRANT COUNTY INTL (MWH)

**⚠** Circling Rwy 9, 27, 18, 36 NA at night. VDP NA when using EPH altimeter setting. When local altimeter setting not received, use EPH altimeter setting and increase all MDAs 40 feet.

**⚠** MISSED APPROACH: Climbing right turn to 4000 on MWH VOR/DME R-054 to BATUM INT/9.8 DME and hold, continue climb-in-hold to 4000.

ATIS <b>119.05</b>	GRANT COUNTY APP CON * <b>126.4 379.95</b>	GRANT COUNTY TOWER * <b>118.25</b> (CTAF) <b>0 257.8</b> (E) <b>128.0 257.8</b> (W)	GND CON <b>121.9</b>	UNICOM <b>122.95</b>
-----------------------	---	---	-------------------------	-------------------------



NW-1, 14 MAY 2026 to 11 JUN 2026

NW-1, 14 MAY 2026 to 11 JUN 2026