

VOR/DME MWH <b>115.0</b> Chan <b>97</b>	APP CRS <b>025°</b>	Rwy Ldg TDZE <b>1189</b> Apt Elev <b>1189</b>
---	------------------------	---

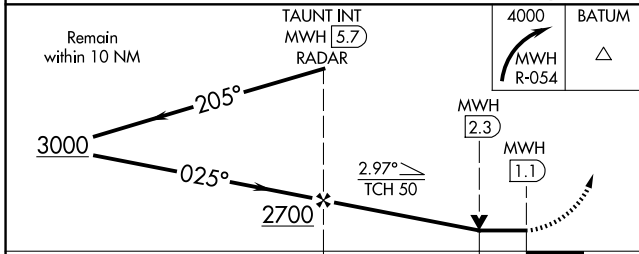
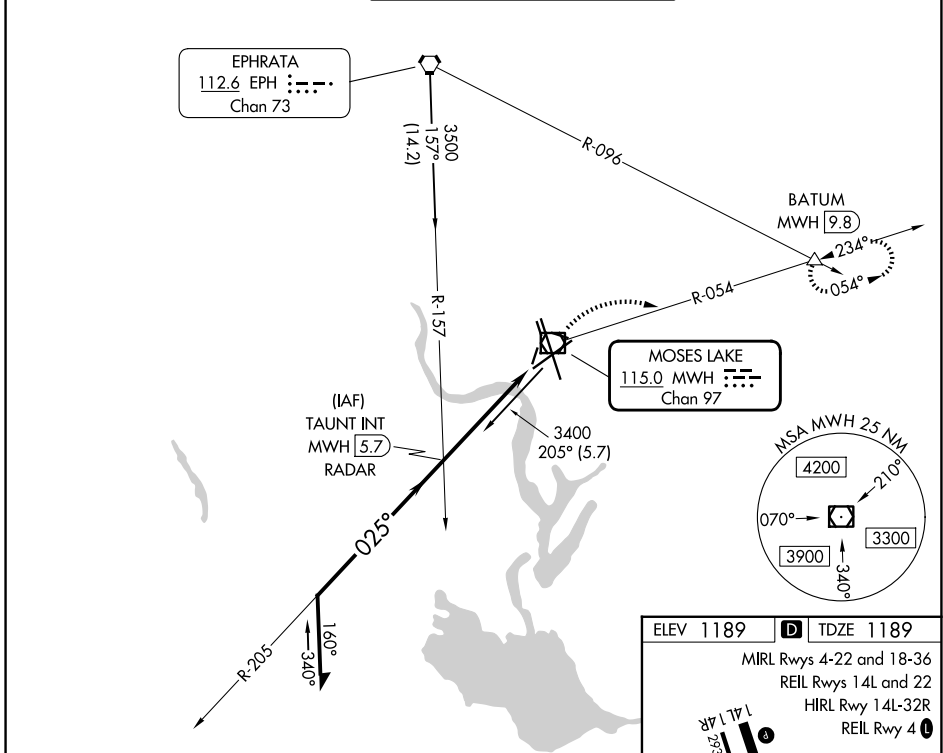
# VOR RWY 4

GRANT COUNTY INTL (MWH)

**⚠** Circling Rwy 9, 27, 18, 36 NA at night. VDP NA when using EPH altimeter setting. When local altimeter setting not received, use EPH altimeter setting and increase all MDAs 40 feet and S-4 visibility Cats C/D 1/8 SM, and Circling visibility Cat D 1/4 SM.

**MISSED APPROACH:** Climbing right turn to 4000 on MWH VOR/DME R-054 to BATUM INT/MWH 9.8 DME and hold, continue climb-in-hold to 4000.

ATIS <b>119.05</b>	GRANT COUNTY APP CON * <b>126.4 379.95</b>	GRANT COUNTY TOWER * <b>118.25 (CTAF) 257.8 (E)</b> <b>128.0 257.8 (W)</b>	GND CON <b>121.9</b>	UNICOM <b>122.95</b>
-----------------------	---	--	-------------------------	-------------------------



ELEV 1189 TDZE 1189

MIRL Rwys 4-22 and 18-36  
REIL Rwys 14L and 22  
HIRL Rwy 14L-32R  
REIL Rwy 4

14L 14R  
2536 X 75  
32L  
13303 X 200  
3500 X 90  
0.3% UP  
0.2% DOWN  
0.4% DOWN  
10000 X 100  
TWR  
AS  
32R

FAF to MAP 4.6 NM

Knots	60	90	120	150	180
Min:Sec	4:36	3:04	2:18	1:50	1:32

CATEGORY	A	B	C	D
S-4	1620-1 431 (500-1)		1620-1 1/4 431 (500-1 1/4)	
CIRCLING	1680-1 491 (500-1)		1720-1 1/2 531 (600-1 1/2)	1840-2 651 (700-2)

NW-1, 14 MAY 2026 to 11 JUN 2026

NW-1, 14 MAY 2026 to 11 JUN 2026