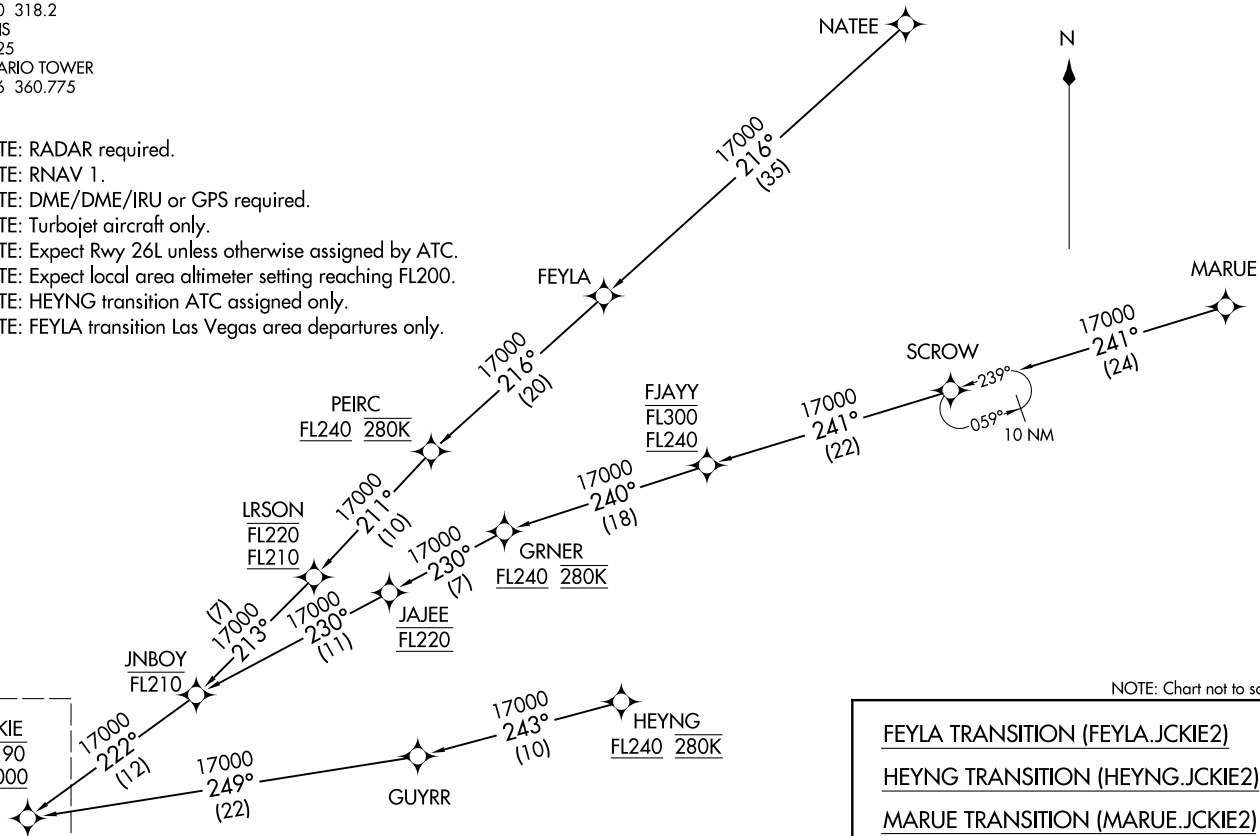


JCKIE TWO ARRIVAL (RNAV) Transition Routes
 (JCKIE.JCKIE2) 05DEC19

SOCAL APP CON
 127.0 318.2
 D-ATIS
 124.25
 ONTARIO TOWER
 120.6 360.775

- NOTE: RADAR required.
- NOTE: RNAV 1.
- NOTE: DME/DME/IRU or GPS required.
- NOTE: Turbojet aircraft only.
- NOTE: Expect Rwy 26L unless otherwise assigned by ATC.
- NOTE: Expect local area altimeter setting reaching FL200.
- NOTE: HEYNG transition ATC assigned only.
- NOTE: FEYLA transition Las Vegas area departures only.



(CONTINUED ON FOLLOWING PAGE)

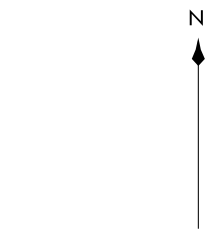
NOTE: Chart not to scale.

FEYLA TRANSITION (FEYLA.JCKIE2)
 HEYNG TRANSITION (HEYNG.JCKIE2)
 MARUE TRANSITION (MARUE.JCKIE2)
 NATEE TRANSITION (NATEE.JCKIE2)

ONTARIO, CALIFORNIA
 ONTARIO INTL (ONT)

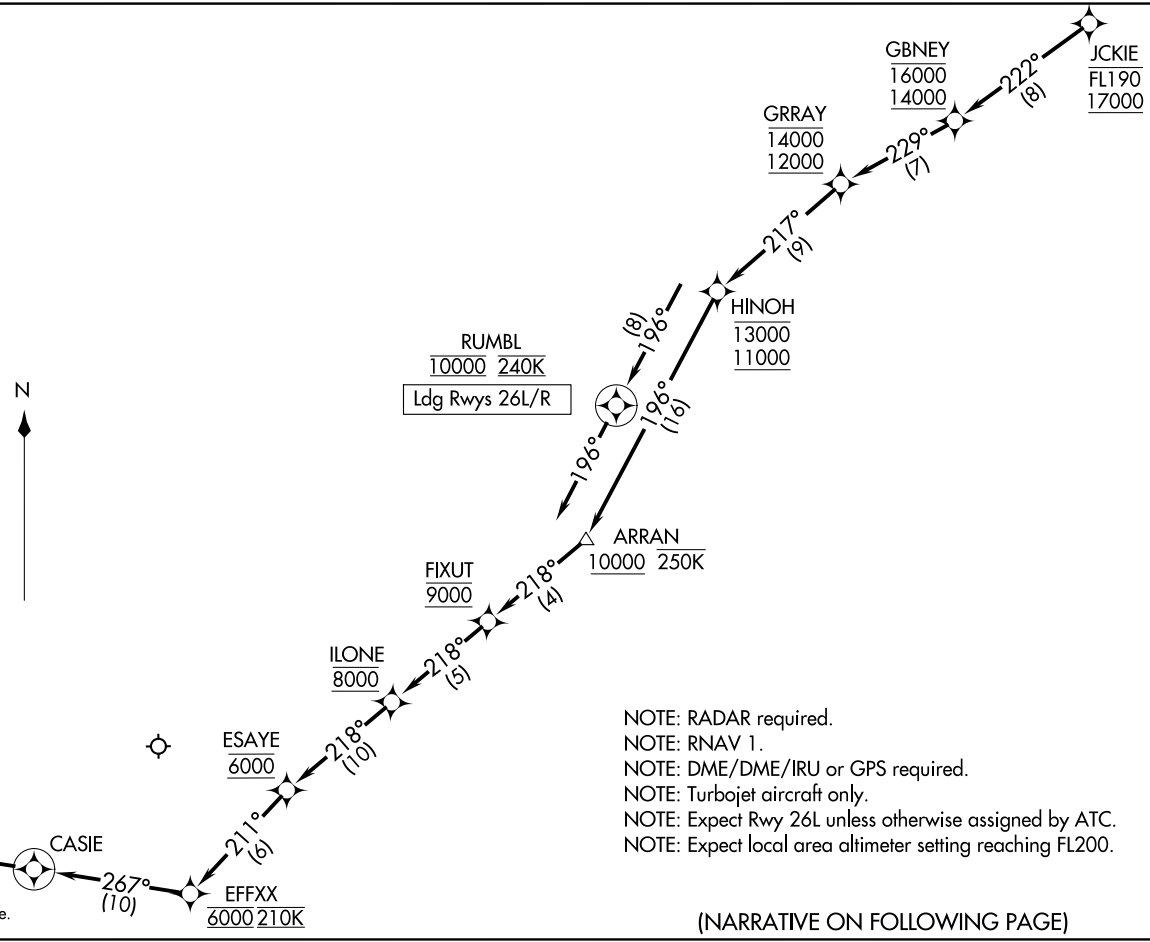
(JCKIE.JCKIE2) 19339
 JCKIE TWO ARRIVAL (RNAV) Transition Routes
 A-95 (FAA)
 ONTARIO INTL (ONT)
 ONTARIO, CALIFORNIA

SOCAL APP CON
127.0 318.2
D-ATIS
124.25
ONTARIO TOWER
120.6 360.775



Ldg Rwy 8L/R

NOTE: Chart not to scale.



(NARRATIVE ON FOLLOWING PAGE)

ARRIVAL ROUTE DESCRIPTION

From JCKIE on track 222° to cross GBNEY between 14000 and 16000, then on track 229° to cross GRRAY between 12000 and 14000, then on track 217° to cross HINOH between 11000 and 13000.

LANDING RUNWAY 8L/R: From HINOH on track 196° to cross ARRAN at or above 10000 and at or below 250K, then on track 218° to cross FIXUT at 9000, then on track 218° to cross ILONE at 8000, then on track 218° to cross ESAYE at 6000, then on track 211° to cross EFFXX at 6000 and at 210K then on track 267° to CASIE, then on heading 267° or as assigned by ATC. Expect RNAV (RNP) Z RWY 8L approach or RADAR vectors to final approach course.

LANDING RWY 26L/R: From HINOH on track 196° to cross RUMBL at 10000 and at 240K, then on heading 196° or as assigned by ATC. Expect RNAV (RNP) Z RWY 26L approach or RADAR vectors to final approach course.

LOST COMMUNICATIONS

LANDING WEST: Proceed on the RNAV (RNP) Z RWY 26L approach or ILS or LOC RWY 26L approach.

LANDING EAST: Proceed on the RNAV (RNP) Z RWY 8L approach or ILS or LOC RWY 8L approach.

SW-3, 14 MAY 2026 to 11 JUN 2026

SW-3, 14 MAY 2026 to 11 JUN 2026