

POMONA ONE DEPARTURE
(POM1, POM) 03JAN19

POMONA ONE DEPARTURE
(POM1, POM) 24051

SOCAL DEP CON
125.5 349.0
D-ATIS
124.25
CLNC DEL
132.9
CPDLC

AVENAL
117.1 AVE :--
Chan 118

GORMAN
116.1 GMN :--
Chan 108

SHAFTER
115.4 EHF :--
Chan 101

DAGGETT
113.2 DAG :--
Chan 79

**TOP ALTITUDE:
ASSIGNED BY ATC**

POMONA
110.4 POM :--
Chan 41

- NOTE: DME required.
NOTE: RADAR required for Runways 8L/R. If unable to comply with SULZU restriction, advise ATC prior to departure.
NOTE: The DAG Transition requires a minimum of 373' per NM to MEA of 14000 when crossing POM VORTAC at 7000.

TAKEOFF MINIMUMS

- Rwys 26L/R DAG Transition standard with minimum climb of 470' per NM to 14000.
Rwys 8L/R DAG Transition standard with minimum climb of 343' per NM to 12400.
Rwys 26L/R EHF and GMN Transitions standard with minimum climb of 309' per NM to 8600.
Rwys 8L/R EHF and GMN Transitions standard with minimum climb of 282' per NM to 8500.

† Approximate distance from takeoff area
Rwy 8 to POM VORTAC.
Approximate distance from takeoff area
Rwy 26 to POM VORTAC.

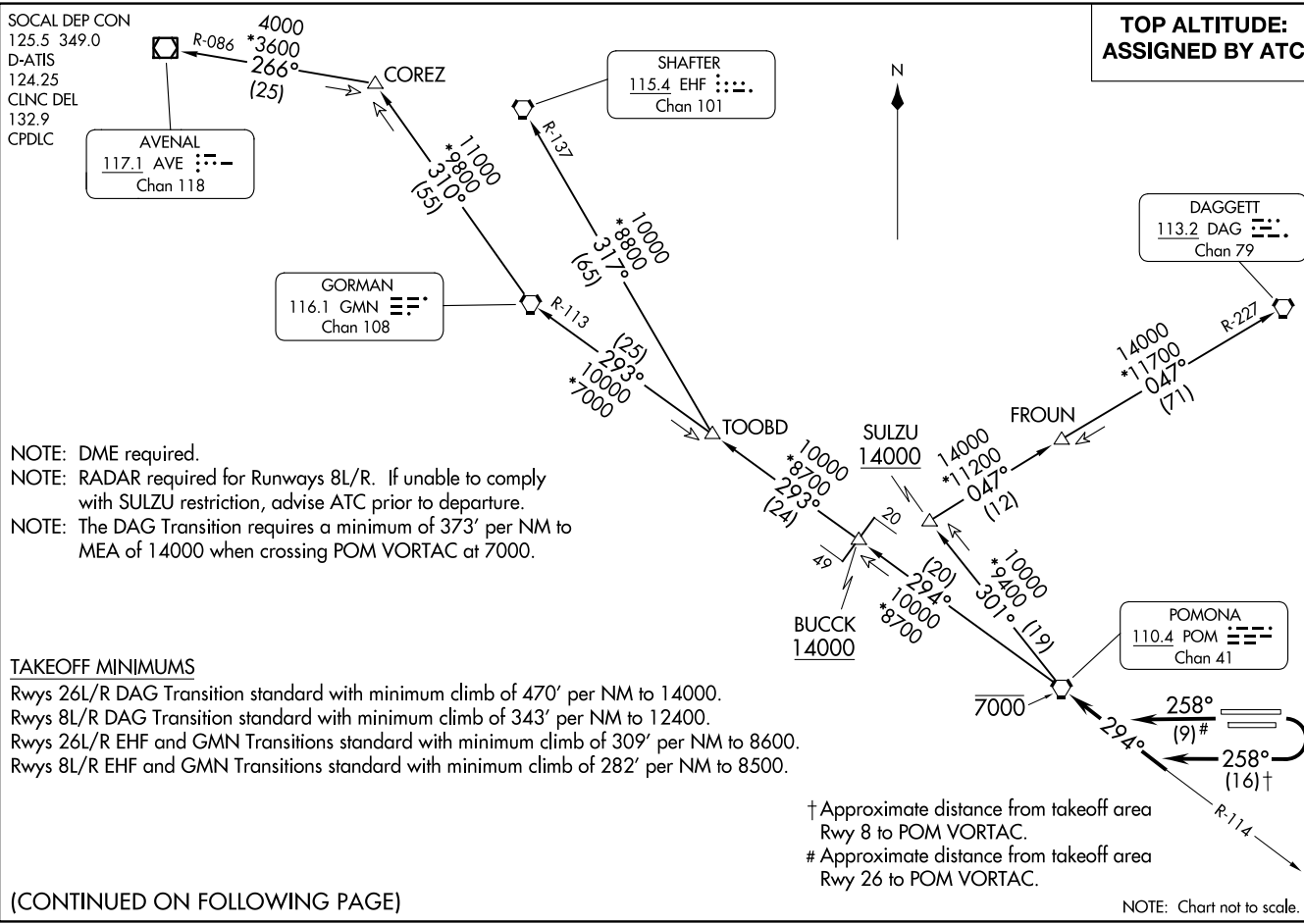
(CONTINUED ON FOLLOWING PAGE)

NOTE: Chart not to scale.

AL-965 (FAA)

ONTARIO INTL (ONT)
ONTARIO, CALIFORNIA

ONTARIO, CALIFORNIA
ONTARIO INTL (ONT)





DEPARTURE ROUTE DESCRIPTION

TAKEOFF RUNWAYS 8L/R: Climbing right turn heading 258° to intercept and proceed on POM R-114 to POM VORTAC, cross POM VORTAC at or below 7000. Thence. . . .

TAKEOFF RUNWAYS 26L/R: Climb heading 258° to intercept and proceed on POM R-114 to POM VORTAC, cross POM VORTAC at or below 7000. Thence. . . .

. . . .on (transition). Expect filed altitude ten minutes after departure.

AVENAL TRANSITION (POM1.AVE): From over POM VORTAC on POM R-294 to BUCCK, then on GMN R-113 to GMN VORTAC, then on GMN R-310 to COREZ, then on AVE R-086 to AVE VOR/DME.

DAGGETT TRANSITION (POM1.DAG): From over POM VORTAC on POM R-301 to SULZU then on DAG R-227 to DAG VORTAC.

GORMAN TRANSITION (POM1.GMN): From over POM VORTAC on POM R-294 to BUCCK, then on GMN R-113 to GMN VORTAC.

SHAFTER TRANSITION (POM1.EHF): From over POM VORTAC on POM R-294 to BUCCK, then on GMN R-113 to TOOBD, then on EHF R-137 to EHF VORTAC.

SW-3, 14 MAY 2026 to 11 JUN 2026

SW-3, 14 MAY 2026 to 11 JUN 2026