

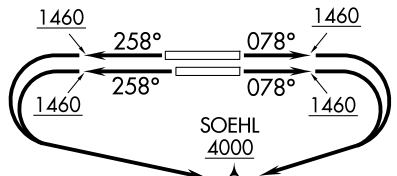
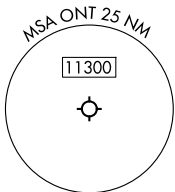
RNAV 1 - DME/DME/IRU or GPS: OTAYY, MTBAL and AVRRY Transitions.  
 RNAV 1 - GPS: DINTY and MALIT Transitions.  
 RADAR required for non-GPS equipped aircraft.

**TOP ALTITUDE  
 DINTY AND MALIT TRANSITIONS:  
 15000  
 ALL OTHER TRANSITIONS:  
 ASSIGNED BY ATC**

RAJEE FOUR DEPARTURE (RNAV)  
 (RAJEE4,RAJEE) 21MARP24

(RAJEE4,RAJEE) 24081  
 RAJEE FOUR DEPARTURE (RNAV)

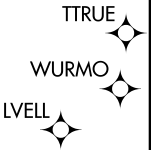
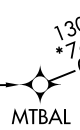
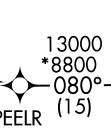
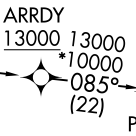
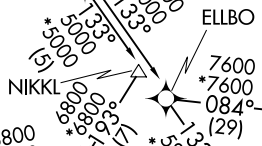
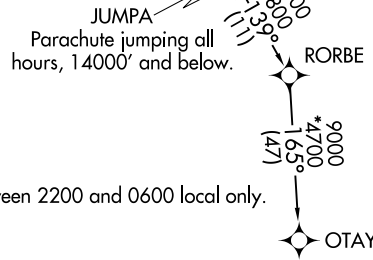
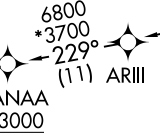
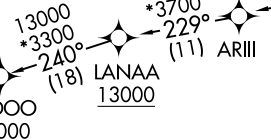
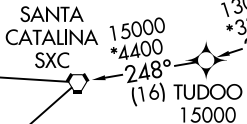
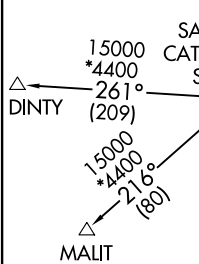
SOCAL DEP CON  
 135.4 377.125  
 D-ATIS  
 124.25  
 CLNC DEL  
 132.9  
 GND CON  
 121.9 257.8  
 ONTARIO TOWER  
 120.6 360.775



NOTE: Parachute jumping and ultralight activities over L65, 14500' and below, north of track between ELLBO and ARRDY.

**TAKEOFF MINIMUMS**

Rwys 8L/R, 26L/R: Standard with minimum climb of 500'/NM to 1460.



NOTE: Turbojet and turboprop aircraft only.  
 NOTE: MALIT and DINTY Transitions available between 2200 and 0600 local only.  
 NOTE: DINTY Transition ATC assigned only.

NOTE: Chart not to scale.

(CONTINUED ON FOLLOWING PAGE)

ONTARIO, CALIFORNIA  
 ONTARIO INTL (ONT)

ONTARIO INTL (ONT)  
 ONTARIO, CALIFORNIA



DEPARTURE ROUTE DESCRIPTION

TAKEOFF RUNWAYS 8L/R: Climb on heading 078° to 1460, then right turn direct to cross SOEHL at or above 4000, then on track 133° to cross RAJEE at 7000, thence . . . .

TAKEOFF RUNWAYS 26L/R: Climb on heading 258° to 1460, then left turn direct to cross SOEHL at or above 4000, then on track 133° to cross RAJEE at 7000, thence . . . .

. . . . on transition. DINTY and MALIT Transitions: Maintain 15000. All other transitions: maintain ATC assigned altitude. Expect higher altitude 10 minutes after departure.

AVRRY TRANSITION (RAJEE4.AVRRY)

DINTY TRANSITION (RAJEE4.DINTY)

MALIT TRANSITION (RAJEE4.MALIT)

MTBAL TRANSITION (RAJEE4.MTBAL)

OTAYY TRANSITION (RAJEE4.OTAYY)

SW-3, 14 MAY 2026 to 11 JUN 2026

SW-3, 14 MAY 2026 to 11 JUN 2026