

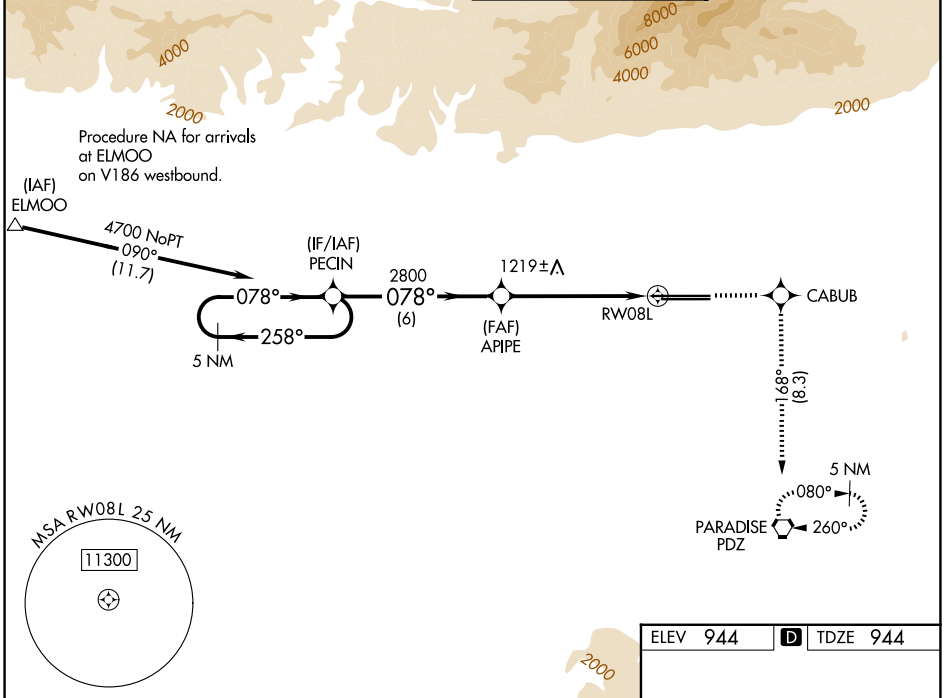
WAAS CH <b>45807</b> <b>W08B</b>	APP CRS <b>078°</b>	Rwy Ldg <b>11200</b> TDZE <b>944</b> Apt Elev <b>944</b>
--	------------------------	--

# RNAV (GPS) Y RWY 8L

ONTARIO INTL (ONT)

<p><b>▽</b> For uncompensated Baro-VNAV systems, LNAV/VNAV NA below -16°C (4°F) or above 47°C (116°F). Circling NA north of Rwy 8L-26R. DME/DME RNP -0.3 NA. For inoperative MALSR increase LPV visibility all Cats to RVR 6000.</p>	<p>MALSR</p>	<p>MISSED APPROACH: Climb to 4400 direct CABUB and on track 168° to PDZ VORTAC and hold, continue climb-in-hold to 4700.</p>
--	--------------	--

D-ATIS <b>124.25</b>	SOCAL APP CON <b>127.0 318.2</b>	ONTARIO TOWER <b>120.6 360.775</b>	GND CON <b>121.9 257.8</b>
-------------------------	-------------------------------------	---------------------------------------	-------------------------------



VGSi and RNAV glidepath not coincident (VGSi Angle 3.00/ TCH 62).		4400	CABUB	168° tr	PDZ
5 NM Holding Pattern		↑	✧	✧	⬠
GP 3.00° TCH 45		*LNAV only.			
4700 ← 258°		*1.5 NM to RWY08L			
078° →		↓			
PECIN		RWY08L			
2800		↓			
APIPE		↓			
2800		↓			
6 NM		4.1 NM		1.5	

ELEV 944	<b>D</b>	TDZE 944
<p>TDZL/RCLS Rwy 8L, 26L and 26R</p> <p>HIRL Rwy 8L-26R and 8R-26L</p>		

SW-3, 14 MAY 2026 to 11 JUN 2026

SW-3, 14 MAY 2026 to 11 JUN 2026