

ZIGGY EIGHT ARRIVAL  
(ZIGGY ZIGGY8) 11JUN24

(ZIGGY ZIGGY8) 26078  
ZIGGY EIGHT ARRIVAL

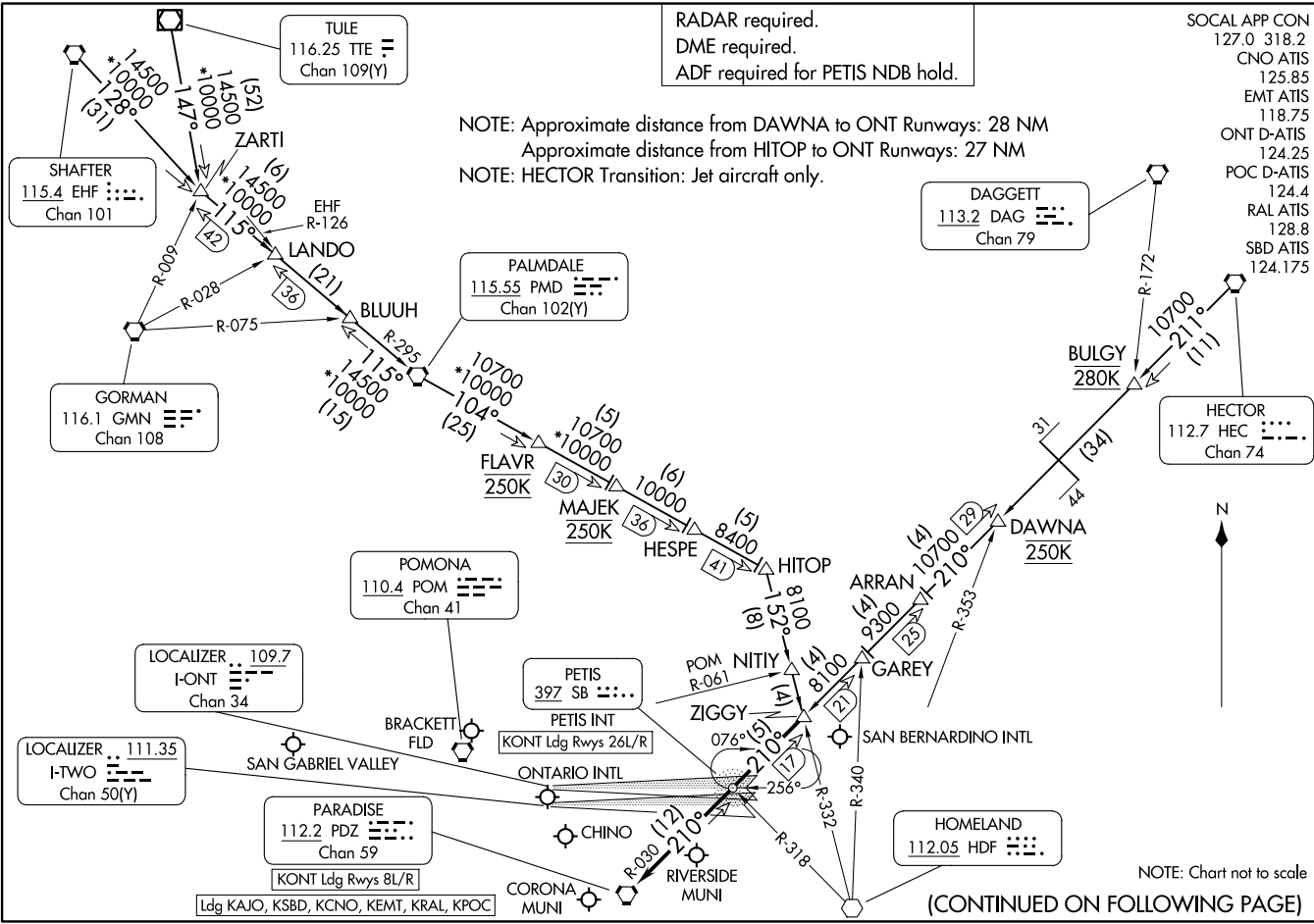
AL-965 (FAA)

ONTARIO, CALIFORNIA

RADAR required.  
DME required.  
ADF required for PETIS NDB hold.

NOTE: Approximate distance from DAWNA to ONT Runways: 28 NM  
Approximate distance from HITOP to ONT Runways: 27 NM  
NOTE: HECTOR Transition: Jet aircraft only.

- SOCAL APP CON 127.0 318.2
- CNO ATIS 125.85
- EMT ATIS 118.75
- ONT D-ATIS 124.25
- POC D-ATIS 124.4
- RAL ATIS 128.8
- SBD ATIS 124.175



LOCALIZER 109.7  
I-ONT  
Chan 34

LOCALIZER 111.35  
I-TWO  
Chan 50(Y)

PARADISE 112.2 PDZ  
Chan 59  
KONT Ldg Rwy 8L/R

Ldg KAJO, KSBD, KCNO, KEMT, KRAL, KPOC

HOMELAND 112.05 HDF

(CONTINUED ON FOLLOWING PAGE)

ONTARIO, CALIFORNIA

ARRIVAL ROUTE DESCRIPTION

HECTOR TRANSITION (HEC.ZIGGY8): From over HEC VORTAC on HEC R-211 to BULGY then on HEC R-211 and PDZ R-030 to DAWNA, then on PDZ R-030 to ZIGGY. Thence . . . .

PALMDALE TRANSITION (PMD.ZIGGY8): From over PMD VORTAC on PMD R-104 to HITOP then HDF R-332 to ZIGGY. Thence . . . .

SHAFTER TRANSITION (EHF.ZIGGY8): From over EHF VORTAC on EHF R-128 and PMD R-295 to PMD VORTAC, then on PMD R-104 to HITOP then HDF R-332 to ZIGGY. Thence . . . .

TULE TRANSITION (TTE.ZIGGY8): From over TTE VOR/DME on TTE R-147 and PMD R-295 to PMD VORTAC, then on PMD R-104 to HITOP and HDF R-332 to ZIGGY. Thence . . . .

LANDING ONTARIO INTL

RUNWAYS 8L/R: From over ZIGGY on PDZ R-030 to PDZ VORTAC. Expect RADAR vectors to final approach course.

RUNWAYS 26L/R: From over ZIGGY on PDZ R-030 to PETIS INT, expect RADAR vectors for ILS approach.

LANDING ALL SATELLITE AIRPORTS

From over ZIGGY on PDZ R-030 to PDZ VORTAC. Expect RADAR vectors to final approach course.

SW-3, 14 MAY 2026 to 11 JUN 2026

SW-3, 14 MAY 2026 to 11 JUN 2026