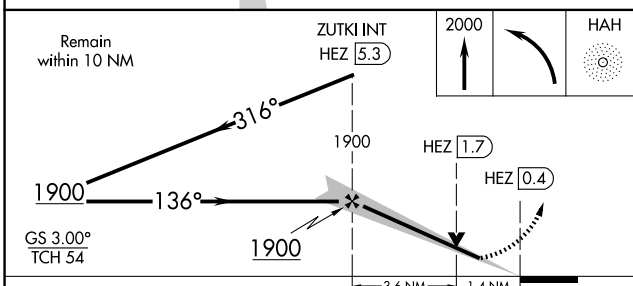
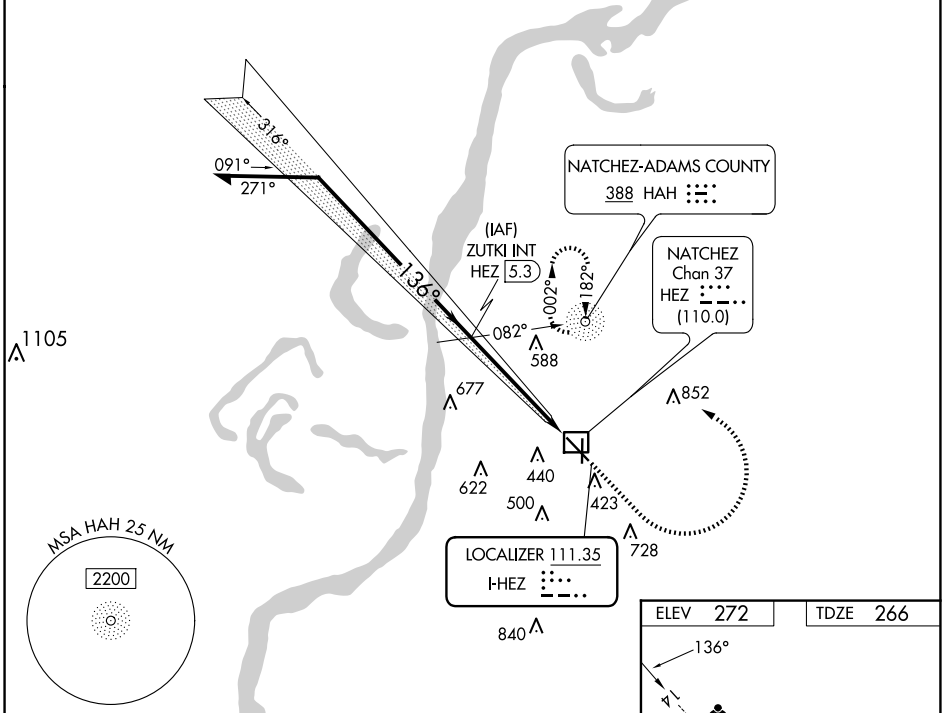


LOC I-HEZ 111.35	APP CRS 136°	Rwy Idg TDZE Apt Elev	6500 266 272
----------------------------	------------------------	-----------------------------	---

ILS or LOC RWY 14

HARDY-ANDERS FLD/NATCHEZ-ADAMS COUNTY (HE/Z)

RNP APCH - GPS required for procedure entry.		MALSR 	MISSED APPROACH: Climb to 2000 then left turn direct HAH NDB and hold.
ADF required.			
<p>▼ Circling Rwy 36 NA at night. Rwy 14 helicopter visibility reduction below 3/4 SM NA. ▲ Inop table does not apply to S-ILS 14 all Cats and S-LOC 14 Cats A/B. For inop ALS, increase S-LOC 14 Cat C/B visibility to 1 1/2 SM.</p>			
AWOS-3PT 124.675	HOUSTON CENTER 120.975 299.6	UNICOM 122.8 (CTAF) 0	



ELEV 272	TDZE 266
HIRL Rwy 14-32 MIRL Rwy 18-36 0	
FAF to MAP 5 NM	
Knots	60 90 120 150 180
Min:Sec	5:00 3:20 2:30 2:00 1:40

CATEGORY	A	B	C	D
S-ILS 14		575-1	309 (400-1)	
S-LOC 14		740-1	474 (500-1)	
C CIRCLING	740-1 468 (500-1)	820-1 548 (600-1)	1020-2 1/4 748 (800-2 1/4)	1220-3 948 (1000-3)

ILS or LOC RWY 14

SC-4, 14 MAY 2026 to 11 JUN 2026

SC-4, 14 MAY 2026 to 11 JUN 2026