


WAAS CH 50505 W14A	APP CRS 136°	Rwy ldg 6500 TDZE 266 Apt Elev 272
--	------------------------	---

RNAV (GPS) RWY 14


HARDY-ANDERS FLD/NATCHEZ-ADAMS COUNTY (HE/Z)

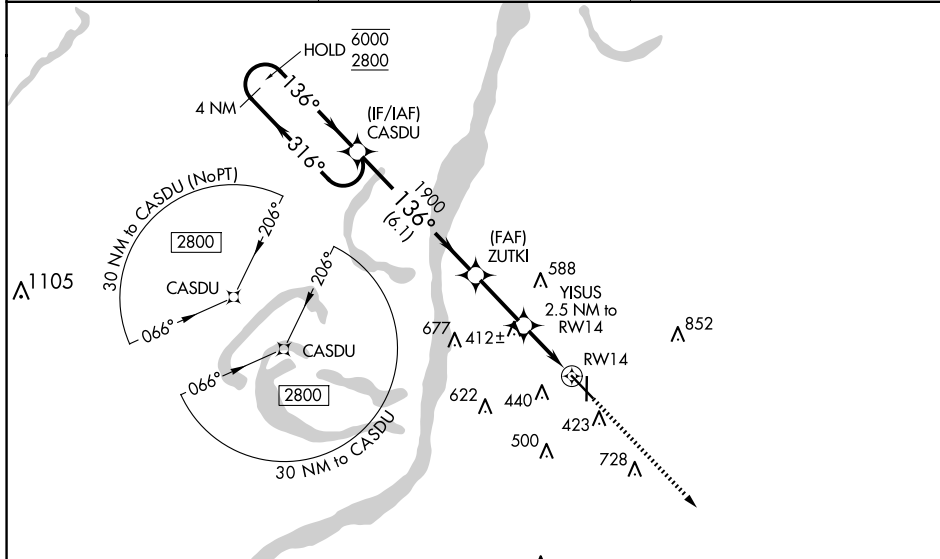
RNP APCH - GPS.

⚠ Circling Rwy 36 NA at night. Rwy 14 helicopter visibility reduction below 3/4 SM NA. For uncompensated Baro-VNAV systems, LNAV/VNAV NA below -15° C or above 54° C. For inop ALS, increase LNAV Cats C and D visibility to 1 1/8 SM. Inop table does not apply to LPV, LNAV/VNAV, and LNAV Cats A and B.

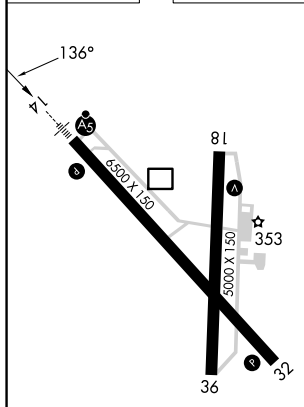
MALSR 


MISSED APPROACH: Climb to 2800 direct WEGRA and hold.

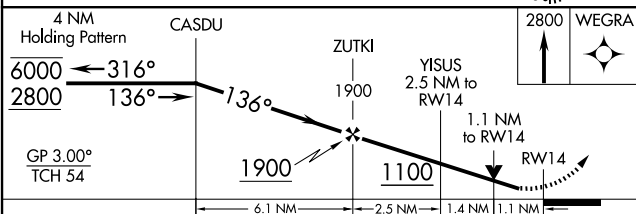
AWOS-3PT 124.675	HOUSTON CENTER 120.975 299.6	UNICOM 122.8 (CTAF) 
----------------------------	--	---




ELEV 272	TDZE 266
----------	----------



HIRL Rwy 14-32
MIRL Rwy 18-36 



CATEGORY	A	B	C	D
LPV DA		575-1	309 (400-1)	
LNAV/VNAV DA		560-1	294 (300-1)	
LNAV MDA		680-1	414 (500-1)	
 CIRCLING	740-1 468 (500-1)	820-1 548 (600-1)	1020-2 1/4 748 (800-2 1/4)	1220-3 948 (1000-3)

SC-4, 14 MAY 2026 to 11 JUN 2026

SC-4, 14 MAY 2026 to 11 JUN 2026