

|                         |                        |                            |             |
|-------------------------|------------------------|----------------------------|-------------|
| WAAS<br>CH <b>93730</b> | APP CRS<br><b>194°</b> | Rwy Ldg<br>TDZE <b>787</b> | <b>5004</b> |
| <b>W19B</b>             |                        | Apt Elev<br><b>787</b>     |             |

# RNAV (GPS) Z RWY 19

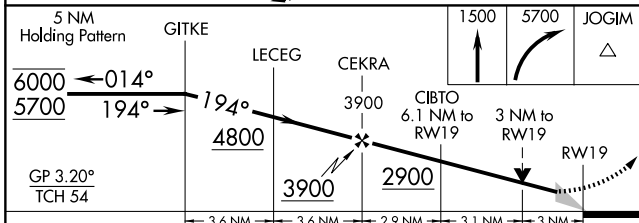
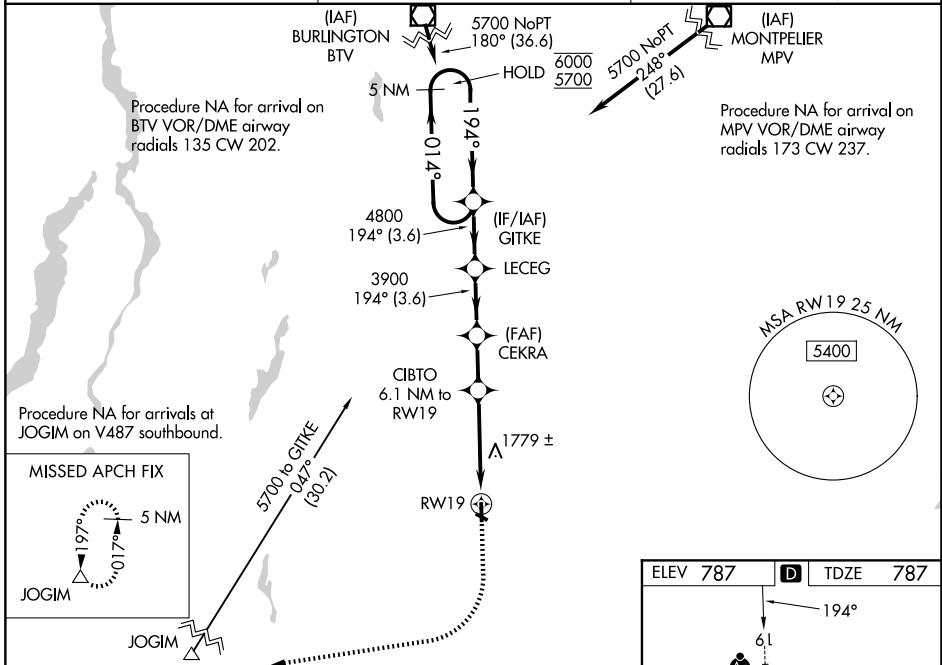
RUTLAND/SOUTHERN VERMONT RGNL (RUT)

RNP APCH - GPS.

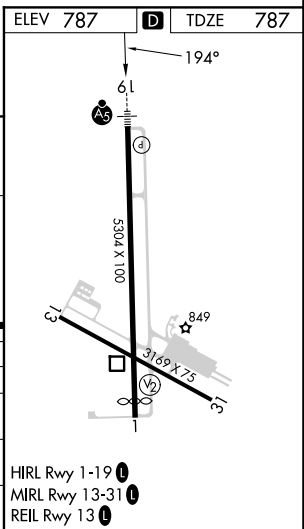
**MAJRS** MISSED APPROACH: Climb to 1500 then climbing right turn to 5700 direct JOGIM and hold, continue climb-in-hold to 5700. † Missed approach requires minimum climb of 420 feet per NM to 3200; if unable to meet climb gradient, see RNAV (GPS) Y Rwy 19.

⚠ Circling NA northeast of Rws 19 and 31. Circling Rwy 13, 31 NA at night. Inop table does not apply to LNAV/VNAV all Cats. Baro-VNAV NA. For inop ALS, increase LPV all Cats visibility to 1½ miles. VDP NA when using VSF altimeter setting. For inop ALS while using VSF altimeter setting, increase LPV all Cats visibility to 1½ miles. Inop table does not apply when using VSF altimeter setting to LNAV/VNAV all Cats and LNAV Cat C. When local altimeter setting not received, use VSF altimeter setting and increase LPV DA to 1281 feet and all visibilities ½ SM; increase LNAV/VNAV DA to 2230 feet; increase all MDAs 80 feet and LNAV visibility Cat C ½ SM.

|                            |                                     |                               |
|----------------------------|-------------------------------------|-------------------------------|
| AWOS-3PT<br><b>118.375</b> | BOSTON CENTER<br><b>135.7 282.2</b> | UNICOM<br><b>122.8 (CTAF)</b> |
|----------------------------|-------------------------------------|-------------------------------|



| CATEGORY     | A                         | B                         | C                         | D  |
|--------------|---------------------------|---------------------------|---------------------------|----|
| LPV DA †     | 1201-¾                    | 414 (500-¾)               |                           | NA |
| LNAV/VNAV DA | 2150-5                    | 1363 (1400-5)             |                           | NA |
| LNAV MDA †   | 1820-¾<br>1033 (1100-¾)   | 1820-1<br>1033 (1100-1)   | 1820-2½<br>1033 (1100-2½) | NA |
| CIRCLING     | 2560-1¼<br>1773 (1800-1¼) | 2560-1½<br>1773 (1800-1½) | 2560-3<br>1773 (1800-3)   | NA |



NE-1, 14 MAY 2026 to 11 JUN 2026

NE-1, 14 MAY 2026 to 11 JUN 2026