


WAAS CH 73036 W12A	APP CRS 115°	Rwy Ldg TDZE Apt Elev	6000 1621 1648
--	------------------------	-----------------------------	---

RNAV (GPS) RWY 12

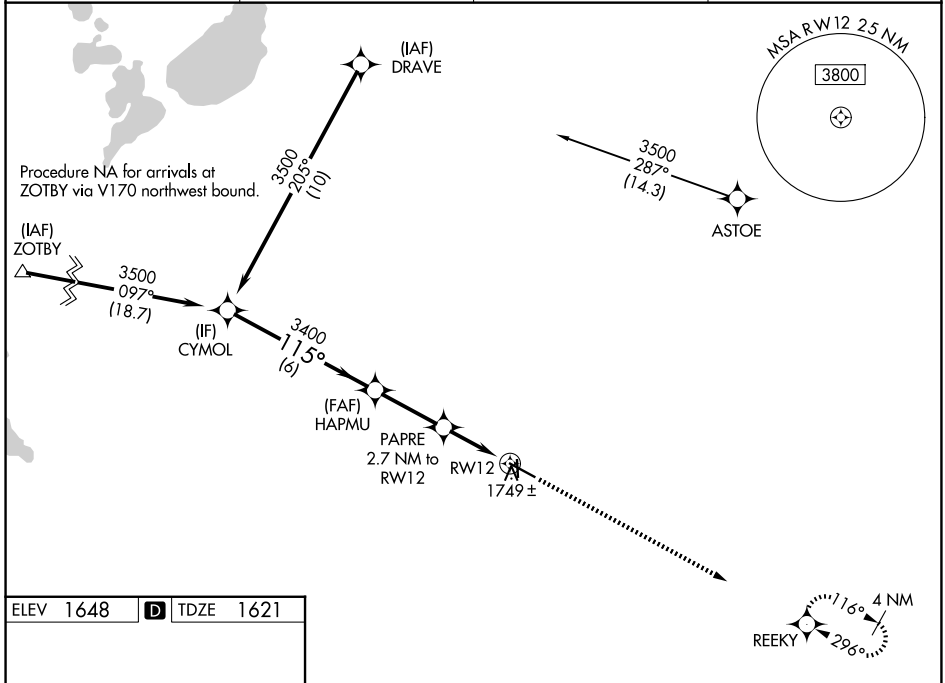
BROOKINGS RGNL (BKX)

⚠ For uncompensated Baro-VNAV systems, LNAV/VNAV NA below -18°C (0°F) or above 54°C (130°F). DME/DME RNP-0.3 NA. When local altimeter setting not received, use Pipestone altimeter setting and increase all DA 81 feet and all MDA 100 feet; increase LNAV/VNAV all Cats visibility ¼ mile; LNAV Cts C and D visibility ⅜ mile; Circling Cts C and D visibility ¼ mile. Baro-VNAV and VDP NA when using Pipestone altimeter setting. Night landing Rwy 17 NA.

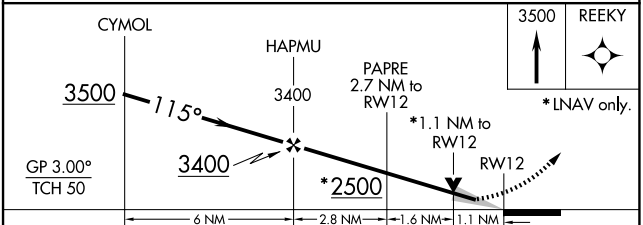
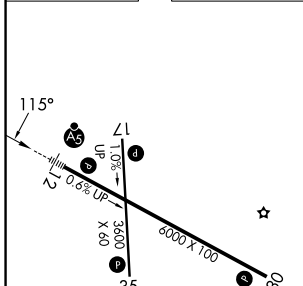
MALS/R
AS 

MISSED APPROACH:
Climb to 3500 direct REEKY and hold.




AWOS-3PT 119.925	MINNEAPOLIS CENTER 132.05 317.4	GCO 121.725	UNICOM 123.0 (CTAF) 
----------------------------	---	-----------------------	---



ELEV 1648	D	TDZE 1621
-----------	----------	-----------



CATEGORY	A	B	C	D
LPV DA	1821-½ 200 (200-½)			
LNAV/VNAV DA	1948-⅝ 327 (300-⅝)			
LNAV MDA	2000-½ 379 (400-½)	2000-⅝ 379 (400-⅝)		
CIRCLING	2140-1 492 (500-1)	2160-1 512 (600-1)	2340-2 692 (700-2)	2340-2¼ 692 (700-2¼)

HIRL Rwy 12-30 
MIRL Rwy 17-35 
REIL Rws 17, 30 and 35 

NC-1, 14 MAY 2026 to 11 JUN 2026

NC-1, 14 MAY 2026 to 11 JUN 2026