

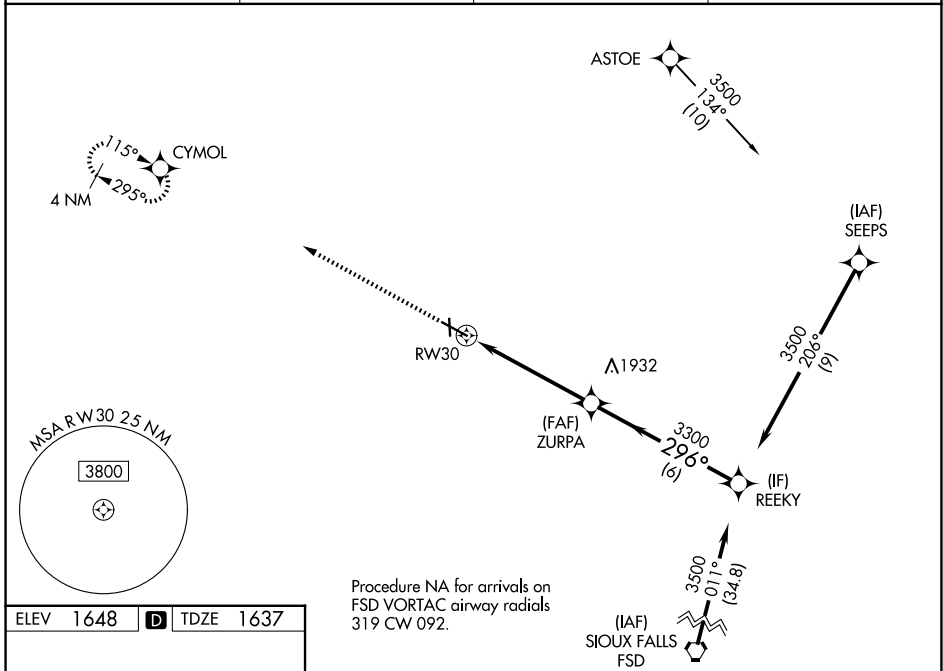
WAAS CH 82736 W30A	APP CRS 296°	Rwy Ldg TDZE Apt Elev	6000 1637 1648
--	------------------------	-----------------------------	---

RNAV (GPS) RWY 30

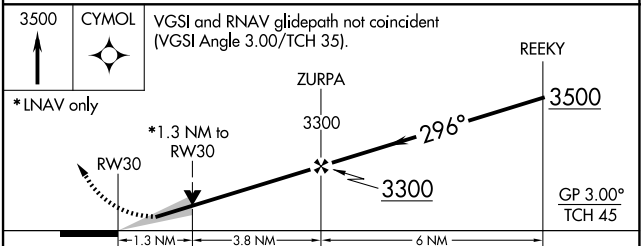
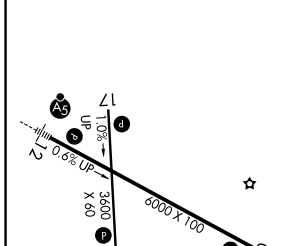
BROOKINGS RGNL (BKX)

RNP APCH.	MISSED APPROACH: Climb to 3500 direct CYMOL and hold.
<p>▼ Circling Rwy 17 NA at night. For uncompensated Baro-VNAV systems, LNAV/VNAV NA below -18°C or above 54°C. Rwy 30 helicopter visibility reduction below 1 SM NA.</p>	

AWOS-3PT 119.925	MINNEAPOLIS CENTER 132.05 317.4	GCO 121.725	UNICOM 123.0 (CTAF) 0
----------------------------	---	-----------------------	---------------------------------



ELEV 1648	D	TDZE 1637
-----------	----------	-----------



	A	B	C	D
CATEGORY	A	B	C	D
LPV DA		1887-1	250 (300-1)	
LNAV/VNAV DA		1968-1½	331 (400-1½)	
LNAV MDA	2080-1	443 (500-1)	2080-1¾	443 (500-1¾)
CIRCLING	2140-1 492 (500-1)	2160-1 512 (600-1)	2340-2 692 (700-2)	2340-2¼ 692 (700-2¼)

HIRL Rwy 12-30 **1**
MIRL Rwy 17-35 **1**
REIL Rwy 17, 30 and 35 **1**

NC-1, 14 MAY 2026 to 11 JUN 2026

NC-1, 14 MAY 2026 to 11 JUN 2026